

# Beldray

Est. 1872

Nobody Does It Better

## 2 in 1 Sweep & Steam Cleaner

### Instruction Manual



Sweeper



Steam  
mop



Surface  
selector  
dial



Easy fill  
water tank



THE **SCIENCE**  
BEHIND CLEAN

## Getting Started

Remove the appliance from the box.

Remove any packaging from the product.

Place the packaging inside the box and either store or dispose of safely.

## In the Box

Steam mop body

Long tube

Short tube with connector

Handle

2 microfibre cloths

Carpet glider

400ml anti calcium filter jug and funnel with detachable filter

Instruction manual

## Features

Temperature steam cleaning freshens carpets and clean tiles, vinyl and hardwood floors.

Lightweight.

Transparent tank allows water level to be monitored and refilled when required.

2 in 1 sweep and steam functions.

Works on several surface types.

## Safety Instructions

When using electrical appliances, basic safety precautions should always be followed.

Check that the voltage indicated on the rating plate corresponds with that of the local network before connecting the appliance to the mains power supply.

This appliance is not intended for use by persons (including children) with reduced physical, sensory or mental capabilities or lack of experience or knowledge. They should be given supervision and instruction in the use of the appliance by a person responsible for their safety.

Children should be supervised to ensure they do not play with the appliance.

If the supply cord is damaged, it must be replaced by a qualified engineer in order to avoid a hazard.

Do not overfill the tank.

To increase the life of your appliance, it is recommended that you filter the water using the filter included.

If you live in a hard water area, use de-mineralised water instead of normal tap water.

Never point the steam outlet at another person or animal.

When adding water to the tank, ensure the appliance is disconnected from the power supply and the steam control is in the closed position.

Do not immerse the appliance in water or any other liquid.

This appliance contains no user serviceable parts. All repairs should only be carried out by a qualified engineer. Improper repairs may place the user at risk of serious harm.  
Do not operate the appliance after a malfunction or if it has been dropped or damaged in any way.  
Do not leave the appliance unattended whilst connected to the mains power supply.  
The appliance must be unplugged from the power supply after use and whilst any maintenance such as cleaning is carried out.

**Warning:** Danger of scalding. Please use caution when using the steam cleaner. The steam emitted from the openings is very hot.

Do not use this appliance for any purpose other than that for which it is designed.  
Ensure the supply cord is kept away from heat or sharp edges that could cause damage.  
This appliance is intended for domestic use only; it should not be used for commercial purposes.  
Never block the steam openings of the product or place it on a soft surface where the steam openings may be blocked. Keep the steam openings free of lint, hair etc.  
Always check that the surface for cleaning is steam tolerant by testing on an unseen area first.  
Ensure all fixings and attachments are secure before use.  
Do not use on any unsealed hard floor surfaces.

**Note:** Surfaces treated with wax and some non-wax floors may lose their sheen due to the heat and steam action. It is recommended to test an isolated surface area before proceeding.  
It is recommended to check the care and use instructions from the floor manufacturer.

**Note:** Always wear suitable shoes when using this appliance and when changing the accessories; do not wear slippers or open-toed footwear.

Never add de-scaling, aromatic, alcoholic or detergent products into the steam mop as this may cause damage and doing so will void your warranty.

Never leave the steam mop on a floor area stationary whilst on for longer than 15 seconds.  
Leaving the mop in this position may cause a build up of a pale residue on the surface.

Description of Parts



2 Microfibre cloths cut through and lock in dirt



Carpet glider for use on carpets



Anti calcium filter jug



Adjustable handle for ease of use



700ml continuous fill water tank



Multi function selection



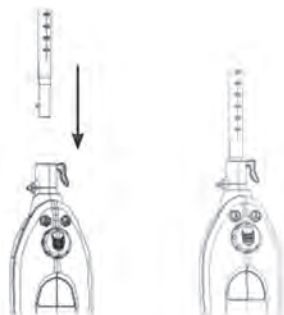
8000 RPM Max. sweeper with 135ml dust container

## Instructions for Use

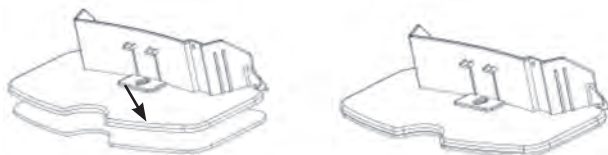
### Assembly

Attach the sweeper to the body.

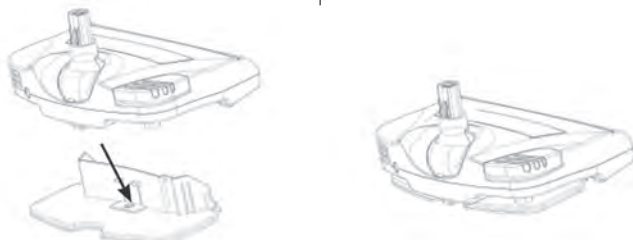
Insert the handle into the body by pushing down until it clicks into place; ensure it is correctly positioned.



Attach the microfibre cloth to the dust container.



Position the container underneath the sweeper.



When using the steam mop on carpets, place the container (with the microfibre cloth in place) over the carper glider.



**Note:** Do not operate without the microfibre cloth pad.

Fill water into the water tank using the anti calcium filter jug; do not fill above 700ml.

Place the filter into the provided jug and pour water over the filter, this will remove any limescale traces in your water. You may need to perform this more than once to fill the tank to the max. level.

Twist the quick release cord wrap clockwise to unwrap the power cord completely and plug into the mains power supply.

## Instructions for Use

### Filling the Water Tank

Fit the filter inside the anti calcium filter jug and fill to the top with water. Water will filter through within a few minutes to around the 200ml mark. You will need to filter more water to get to the max. 700ml level of the water tank.

Once the appliance is fully assembled and the water tank is filled, connect the cleaner to the mains power supply.

To sweep the floor, select the brush switch and run the sweeper across the floor in an even, back and forth motion.

Once you have swept the floor, activate the steamer by pressing the steam switch; the water tank will illuminate red.

Select the required floor type using the dial, starting at carpet and turning the dial clockwise to increase the steam and then anticlockwise to reduce the steam.

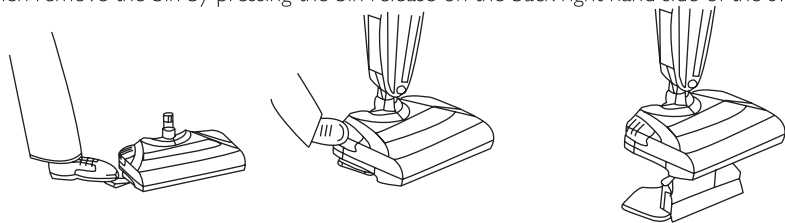
The carpet setting being the least amount of steam to protect the fabric of the carpet, while the stone/marble setting is the heavier steam flow, giving a stronger clean.



When the water tank changes to blue, the steamer is ready for use.

**Note:** When the water in the tank is running low, the tank light will flash red.

Once cleaning is complete, remove the mop pad by placing your foot on the cloth removal tab as shown, then remove the bin by pressing the bin release on the back right hand side of the sweeper head.



## Cleaning & Maintenance

**Note:** Allow the appliance to fully cool before performing any maintenance or troubleshooting checks. Never use bleach or fabric softener when washing the microfibre cloths. Drain the remaining water in the tank and clean the tank after every use. The steam mop should be wiped down using a soft cloth. The mop pad can be machine washed in hot water and then tumble dried.

### How to De-calcify the Water Tank Interior

To clean calcium deposits that build up inside the water tank, add one or two tablespoons of white vinegar to a full water tank, close the tank and shake the contents, then empty the tank. Do not turn the steamer on.

### How to De-calcify the Main Unit

If your steam mop begins to produce less steam than usual or stops producing steam, you may need to remove limescale, which can develop over time on metal parts and greatly affect the mop performance.

It is recommended that you de-calcify after every 25-50 uses or once a month.

The frequency of removal depends on the hardness of your tap water and how often you use your steamer. If you live in an especially hard water area, you may need to use de-mineralised water.

1. Prepare a solution of ½ white vinegar and ½ tap water and add to the tank.
2. Secure and position the unit to ensure steam release is aimed away from the floor or surrounding objects and surfaces. Plug the unit in, turn the unit on by pressing the power switch and allow the unit to produce steam until the solution is used up.
3. Repeat the above procedure until the normal steam rate is achieved.
4. Fill the tank with water and pour out.
5. Fill the tank again to the Max. level, switch on and allow the unit to produce steam until all the water has been used.

**Warning:** Do not leave the steamer unattended during use or during limescale removal.

**Note:** Perform a test on a suitable isolated area after each limescale removal to ensure there is no vinegar solution left in the unit.

**Note:** Due to the nature of UK water supplies, some areas of the country experience larger amounts of limescale build up. If you live in one of these areas you may need to decalcify your unit more often.

Troubleshooting

Problem	Solution
LED indicator is not on.	Ensure the steam mop power cord is correctly plugged in. Try operating the steam mop from another power outlet.
No steam.	Ensure the water tank is filled with water and located properly.
Pale residue left on the floor.	This is caused by the steam mop being in the same position for too long. The residue can be removed with household white vinegar or a de-calcifying product. Alternatively reheat the area for 1 minute. <b>Caution:</b> Do not overheat.

Specification

Product Code: BEL0183  
Voltage: 220-240V 50Hz  
Wattage: 1500W  
Waterproof Level: IPX4  
Water Tank Capacity: 700ml  
Steam Temperature: 95~110°C



## UP Global Sourcing

Manchester, OL9 0DD

If this product does not reach you in an acceptable condition please contact our Customer Services Department by one of the following methods:

Telephone: +44 (0)333 577 9820\*

\*Telephone lines are open Monday – Friday, 9am – 5pm (Closed Bank Holidays)

Email: [customersupport@beldray.co.uk](mailto:customersupport@beldray.co.uk)

Fax: 0161 628 2126

Please have your delivery note to hand as details from it will be required.

If you wish to return this product please return it to the retailer from where it was purchased with your receipt (subject to their terms and conditions).

## Guarantee

This product is guaranteed for a period of 1 year from the date of purchase against mechanical and electrical defects.

This guarantee is only valid if the appliance is used solely for domestic purposes in accordance with the instructions and provided that it is not connected to an unsuitable electricity supply or dismantled or interfered with in any way or damaged through misuse. Under this guarantee we undertake to repair or replace free of charge any parts found to be defective. Reasonable proof of purchase must be provided.

Nothing in this guarantee or in the instructions relating to this product excludes, restricts or otherwise affects your statutory rights.

In line with our policy of continuous development we reserve the right to change this product, packaging and documentation specification without notice.

Consumables are not guaranteed i.e. plug and fuse.

The crossed out wheellie bin symbol on this item indicates that this appliance needs to be disposed of in an environmentally friendly way when it becomes of no further use or has worn out. Contact your local authority for details of where to take the item for recycling.



## Connection to the mains

Please check that the voltage indicated on the product corresponds with your supply voltage.

### Important

As the colours in the mains lead of this appliance may not correspond with the coloured markings identifying the terminals in your plug, please proceed as follows:

The wires in the mains lead are coloured in accordance with the following code:

Blue Neutral (N)

Brown Live (L)

Green/Yellow Earth ( $\perp$ )

FOR UK USE ONLY - Plug fitting details (where applicable).

The wire coloured BLUE is the NEUTRAL and must be connected to the terminal marked N or coloured BLACK.

The wire coloured BROWN is the LIVE wire and must be connected to the terminal marked L or coloured RED.

The wire coloured GREEN/YELLOW must be connected to the terminal marked with the letter E or marked  $\perp$ .

On no account must either the BROWN or the BLUE wire be connected to the EARTH terminal ( $\perp$ ).

Always ensure that the cord grip is fastened correctly.

The plug must be fitted with a fuse of the same rating already fitted and conforming to BS 1362 and be ASTA approved.

If in doubt consult a qualified electrician who will be pleased to do this for you.

### Non-rewireable mains plug

If your appliance is supplied with a non-rewireable plug fitted to the mains lead and should the fuse need replacing, you must use an ASTA approved one (conforming to BS 1362 of the same rating).

If in doubt, consult a qualified electrician who will be pleased to do this for you.

If you need to remove the plug - DISCONNECT IT FROM THE MAINS and then cut it off the mains lead and immediately dispose of it safely. Never attempt to re-use the plug or insert it into a socket outlet as there is a danger of an electric shock.

