

Beldray^{Est 1872}

Nobody Does It Better

12 V Wet and Dry Vac Instruction Manual



**Wall bracket and
accessory holder**
for easy storage.



Crevice tool
for all those awkward places.



Brush tool
for curtains, upholstery
and fabrics



THE **SCIENCE**
BEHIND CLEAN

Table of Contents

Getting Started 5

In the Box 5

Features 5

Safety Instructions 5

Battery Safety, Removal and Disposal 6

Instructions for Use 8

Installing the Wall Bracket and Accessory Holder 8

Charging the Wet and Dry Vac 9

Selecting the Correct Attachment 10

Installing the Attachments 10

Mixing Wet and Dry Functions 10

Troubleshooting 11

Cleaning and Maintenance 12

Storage 12

Specifications 12

Guarantee 14

Getting Started

Remove the appliance from the box.

Remove any packaging from the appliance.

Place the packaging inside the box and either store or dispose of safely.

In the Box

Vacuum Cleaner with Filter

Mains Power Adaptor

Wall Bracket and Accessory Holder

Wall Bracket Fixings

Crevice Nozzle

Brush Attachment

Rubber Nozzle

Features

Wet and dry operation

Wall mountable storage

Washable filter

Safety Instructions

When using electrical appliances, basic safety precautions should always be followed.

Check that the voltage indicated on the rating plate corresponds with that of the local network before connecting the appliance to the mains power supply.

Children aged from 8 years and people with reduced physical, sensory or mental capabilities or lack of experience and knowledge can use this appliance, only if they have been given supervision or instruction concerning use of the appliance in a safe way and understand the hazards involved. Children should be supervised to ensure that they do not play with the appliance.

Unless they are older than 8 and supervised, children should not perform cleaning or user maintenance.

This product is not a toy.

This appliance contains no user serviceable parts. If the power supply cord, plug or any part of the appliance is malfunctioning or if it has been dropped or damaged, only a qualified electrician should carry out repairs. Improper repairs may place the user at risk of harm.

Keep the appliance out of reach of children.

Keep the appliance and its power supply cord away from heat or sharp edges that could cause damage.

Keep the appliance free of dust, lint, hair or anything that may reduce the airflow of the appliance.

Do not use this appliance without the dust container and filter in position.

Do not use the appliance with wet hands.

Do not use this appliance if any of the openings are blocked.

Do not use the appliance to pick up flammable liquids, matches, cigarette ends, hot ashes or any hot, burning or smoking objects.

Do not use this appliance to pick up hard, sharp objects such as glass or nails etc.

Do not use any accessories with this appliance other than those supplied with or recommended by the manufacturer.

Do not immerse the appliance in water or any other liquid.

Do not use this appliance for anything other than it's intended use.

Do not use this appliance outdoors.

Do not leave this appliance unattended whilst connected to the mains power supply.

Do not remove from the mains power supply by pulling the cord; switch off and remove the plug by hand.

Do not store the appliance in direct sunlight or in high humidity conditions.

Use extreme caution if vacuuming on a flight of stairs.

Use of an extension cord with this appliance is not recommended.

Ensure that the dust filter is regularly cleaned to preserve the suction of the vacuum cleaner.

Always unplug the appliance after use and before any cleaning or maintenance.

Remove the adaptor from the supply if the appliance will not be used for a long period of time.

This appliance should not be operated by means of an external timer or separate remote control system.

This appliance is intended for domestic use only. It should not be used for commercial purposes.

Battery Safety, Removal and Disposal

The appliance is fitted with a sealed, lead acid battery which, at the end of the product's life, must be disposed of.

To remove the battery from the appliance, carefully slide off the cover on the base of the unit to give access to the battery.

Withdraw the battery and unclip the live and neutral terminal connections.

To dispose of the exhausted battery unit, take it to your local recycling station. Contact your local government offices for further details.

The battery unit should not be placed near excessive heat sources, such as fire and direct sunlight.

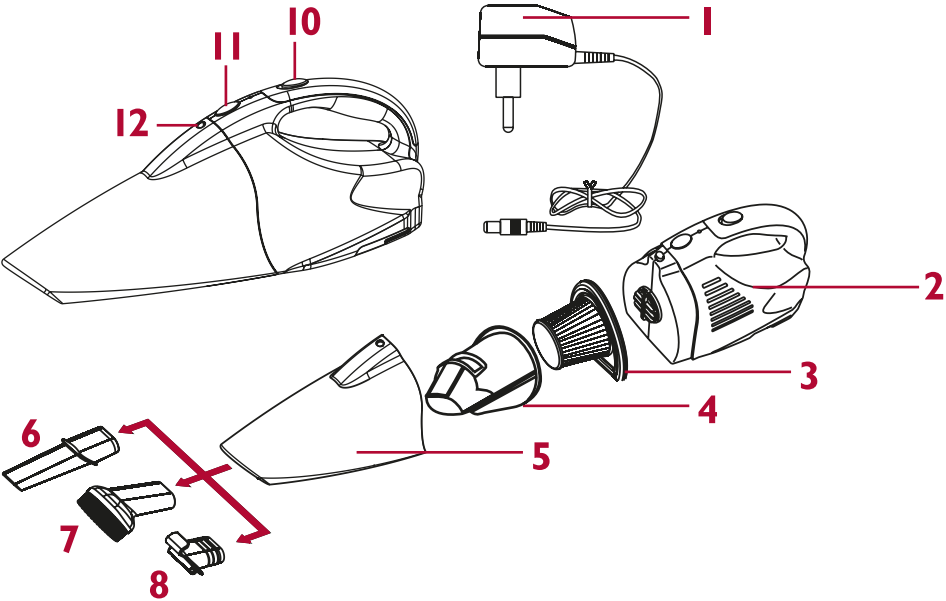
The supply terminals are not to be short-circuited.

Do not dispose of the battery unit in a fire.

Do not crush, puncture, dismantle or otherwise damage the battery unit.

Do not dispose of exhausted battery unit in your household waste.

Description of Parts



- 1. Power adapter
- 2. Wet and Dry Vac main unit
- 3. Filter
- 4. Waterproof housing
- 5. Dust container
- 6. Crevice attachment
- 7. Brush attachment
- 8. Rubber nozzle
- 9. Wall bracket and accessory holder
- 10. On/Off switch
- 11. Dust container release button
- 12. Indicator light

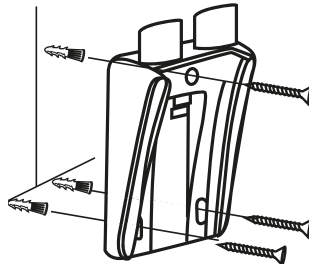
Instructions for Use

Installing the Wall Bracket and Accessory Holder

The wall bracket should be located close to a mains power socket so as to be within reach of the cable connected to the charger.

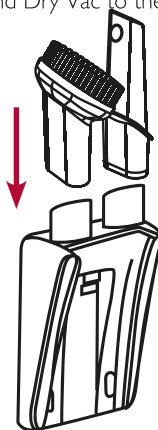
Caution: Ensure that there are no electrical, plumbing or gas supplies buried beneath the wall's surface. These services normally run vertically or horizontally behind the wall and the electrical wiring will radiate from the socket, possibly in more than one direction. Testers are available from good DIY stores. If in any doubt, consult a qualified professional.

- Step 1:** Hold the bracket to the wall and mark the positions of the holes with a pencil.
- Step 2:** Drill the holes to a suitable diameter and use the wall fixings provided (or suitable wall fixings depending upon the structure of the wall) to secure the bracket. If in doubt, consult a qualified professional.
- Step 3:** Attach the bracket securely to the wall using the screws provided.
- Step 4:** Store the attachments on the wall bracket and slide the Wet and Dry Vac

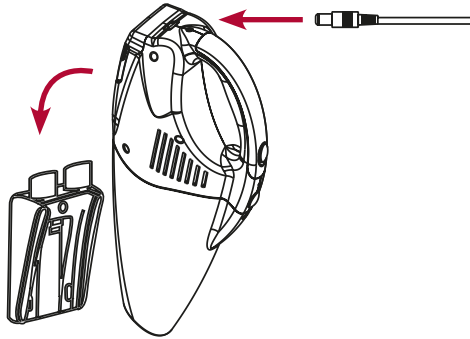


onto the bracket, ensuring that it engages with the supporting ribs.

- Step 5:** Clip the Wet and Dry Vac to the wall bracket.



Step 6: Connect the lead from the power adapter to the rear of the Wet and Dry Vac.



Charging the Wet and Dry Vac

Before first use, the Wet and Dry Vac must be charged for approximately 24 hours. Subsequent charging times will vary dependant upon use. If the Wet and Dry Vac runs down completely during use, it may take up to 12 hours to fully recharge the battery.

Step 1: Clip the vacuum cleaner onto the bracket and connect the power adapter. If you do not wish to use the wall bracket and accessory holder, the power adapter can be plugged directly into the rear of the Wet and Dry Vac.

Step 2: Plug the adaptor into the mains power supply. The indicator light will illuminate red to confirm the battery is charging. When the battery is charged, the red light will fade. The Wet and Dry Vac will take up to 24 hours to fully charge on the first occasion.

Note: Whilst charging, the case will become warm.

Using the Wet and Dry Vac

Step 1: To use the Wet and Dry Vac, first remove the power adapter from the rear of the unit and then remove it from the wall bracket.

Step 2: Slide the On/Off switch forward to switch on the Wet and Dry Vac.

Selecting the Correct Attachment

Attachment	Function
Crevice Attachment	Ideal for vacuuming up fine dust particles or for cleaning narrow openings.
Brush Attachment	Ideal for use on upholstery, where dirt is more likely to be harder to remove through suction alone.
Rubber Nozzle	<p>Ideal for vacuuming up wet spills.</p> <p>Note: When using the Wet and Dry Vac to clean up spillages, ensure that the liquid is emptied from the unit as soon as possible after cleaning.</p> <p>Caution: Do not clean up flammable liquids.</p>

Installing the Attachments

QA - HOW ARE THE ATTACHMENTS INSTALLED? NO SECTION GIVEN

Mixing Wet and Dry Functions

To preserve the life of the Wet and Dry Vac and to ensure optimum performance, **do not mix** wet and dry functions.

Ensure that the dust container has been emptied and is clear of any debris or dust and that it is completely dry before attempting to vacuum liquid.

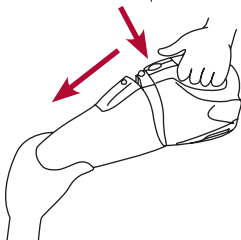
Emptying the Dust Container

The dust container must be emptied regularly to maintain performance.

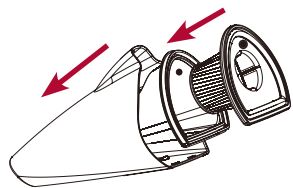
The dust container should also be emptied if:

- 1) There is a reduction in suction power.
- 2) The dust level has reached the Max. mark, indicated on the dust container.

Step 1: Hold the Wet and Dry Vac with the dust container facing downwards. Press the release button on the top of the unit and then carefully remove the dust



container.



- Step 2:** Remove the filter assembly and the waterproof cover.
- Step 3:** Empty the dust container slowly and carefully to reduce the amount of dust released back into the atmosphere.
- Step 4:** If necessary, clean any individual parts of the Wet and Dry Vac with a soft, damp cloth. Dry thoroughly before replacing.
- Step 5:** Refit the cover and filter assembly.

Note: It is recommended that the dust container is emptied outdoors.

Note: It is recommended that the filter and the dust container are cleaned at least once a month. This can be done by rinsing them in cold, detergent-free

water.

Troubleshooting

Symptom	Possible Cause	Solution
Wet and Dry Vac will not charge.	The power adapter is not connected. The power adapter is not properly connected.	Ensure that the connector is correctly fitted to the cleaner and that the power is switched on.
The Wet and Dry Vac's suction is reduced.	The nozzle or attachment is blocked. The dust container is full. The filter is blocked.	Remove the nozzle or attachment and clear any obstructions. Empty the dust container. Clean the filter.



Cleaning and Maintenance

Before performing any cleaning or maintenance, ensure that the Wet and Dry Vac is unplugged from the mains power supply.

Do not immerse the main body of the Wet and Dry Vac in water or any other liquid.

Wipe the main body with a soft, damp cloth and dry thoroughly.

The dust container, outer cover and filter can be cleaned by rinsing with cold water and drying thoroughly.

Do not use any form of solvent or strong, abrasive cleaning agents to clean the Wet and Dry Vac.

Storage

Ensure that the Wet and Dry Vac is cool, clean and dry.

Store in a cool, dry place.

Specifications

Power: 90 W

Battery: 12 V 2.5 mAh Sealed Lead Acid

UP Global Sourcing,

Victoria Street, Manchester, OL9 0DD, UK.

If this product does not reach you in an acceptable condition please contact our Customer Services Department by one of the following methods:

Telephone: +44 (0)333 577 9820*

*Telephone lines are open Monday – Friday, 9am – 5pm (Closed Bank Holidays)

Email: customersupport@beldray.co.uk

Fax: 0161 628 2126

Please have your delivery note to hand as details from it will be required.

If you wish to return this product, please return it to the retailer from where it was purchased with your receipt (subject to their terms and conditions).

Guarantee

This product is guaranteed for a period of 1 year from the date of purchase against mechanical and electrical defects.

This guarantee is only valid if the appliance is used solely for domestic purposes in accordance with the instructions and provided that it is not connected to an unsuitable electricity supply or dismantled or interfered with in any way or damaged through misuse. Under this guarantee, we undertake to repair or replace free of charge any parts found to be defective. Reasonable proof of purchase must be provided.

Nothing in this guarantee or in the instructions relating to this product excludes, restricts or otherwise affects your statutory rights.

In line with our policy of continuous development, we reserve the right to change this product, packaging and documentation specification without notice.

Consumables are not guaranteed i.e. plug and fuse.

The crossed out wheellie bin symbol on this item indicates that this appliance needs to be disposed of in an environmentally friendly way when it becomes of no further use or has worn out. Contact your local authority for details of where to take the item for recycling.



Disposal	
 CARD PACKAGING widely recycled	 PLASTIC PACKING not currently recycled

Imported and Distributed by:

UP Global Sourcing,

Victoria Street, Manchester,

OL9 0DD, UK.

+44 (0)333 577 9820

customersupport@beldray.co.uk

Please retain all instructions for future reference.

Made in China.

CD170912/MD040214/V3