

Beldray[®] Est 1872

Nobody Does It Better

1300 W Steam Cleaner

Instruction Manual



THE **SCIENCE**
BEHIND CLEAN



www.beldray.com

Safety Instructions

When using electrical appliances, basic safety precautions should always be followed.

Check that the voltage indicated on the rating plate corresponds with that of the local network before connecting the appliance to mains power supply.

This appliance can be used by people with reduced physical, sensory or mental capabilities or lack of experience and knowledge can use this appliance, only if they have been given supervision or instruction concerning use of the appliance in a safe way and understand the hazards involved.

Children should be supervised to ensure that they do not play with the appliance.

Children should not perform cleaning or user maintenance.

This appliance contains no user serviceable parts. Only a qualified electrician should attempt repairs. Improper repairs may place the user at risk of harm.

If the supply cord or plug is damaged or broken in any way, do not use the appliance until it has been inspected and repaired by a qualified electrician.

The microfibre pad must be installed correctly before use.

Keep the supply cord away from heat or sharp edges that could cause damage.

Keep the supply cord out of reach of children.

Keep the appliance out of reach of children when it is in use or when it is cooling down.

This appliance should not be operated by means of an external timer or separate remote control system.

Do not pull or carry the appliance by its supply cord.

Do not immerse the appliance in water or any other liquid.

Do not expose the appliance to rain.

Do not handle the appliance with wet hands.

Do not touch any parts of the appliance that may become hot during use.

Do not use the appliance after a malfunction or if it has been dropped, damaged or if there are visible signs of damage or if it is leaking.

Do not leave the appliance unattended whilst connected to the mains power supply.

Do not leave the appliance unattended. Keep children away from unit whilst in use.

Do not use the appliance for anything other than its intended use.

Do not use outdoors.

Do not direct steam at people or animals.

Do not direct steam towards equipment containing electrical components, such as the interior of ovens.

Do not use the appliance in an enclosed space filled with vapour given off by oil-based paint thinners, some mothproofing substances, flammable dust or other explosive or toxic vapours.

Do not use the appliance on leather, wax polished furniture or floors, synthetic fabrics, velvet or other delicate, steam-sensitive materials.

Do not use the appliance if the microfibre cleaning cloth is not installed correctly.

Do not use on any unsealed hard floor surfaces or surfaces that have been treated with wax as the sheen may be removed by the heat and steam action.

It is always recommended to test an isolated area of the surface to be cleaned before proceeding.

Do not direct the steam towards equipment containing electrical components, such as the interior of ovens.

Do not use if the appliance has been dropped, or if there are visible signs of damage or leaking.

Never force the steam unit onto the mop head as this could potentially damage the appliance.

Never add descaling, aromatic, alcoholic or detergent products into the appliance, as this may damage the appliance or make it unsafe for use.

Never leave the mop stationary on a floor area for longer than 15 seconds.


Never pull the power cord to disconnect the appliance from the mains power socket.

Always unplug the appliance after use and before any cleaning or maintenance.

Ensure that the appliance has cooled fully after use, before cleaning or storing away.

This appliance is intended for household use only. It should not be used for commercial purposes.

Note: Surfaces treated with wax and some non-wax floors may lose their sheen due to the heat and steam action. It is recommended to test an isolated surface area before proceeding.

 **Caution:** The appliance emits very hot steam; always exercise extreme caution during use.

Caution: Always wear suitable shoes when using the appliance and when changing the accessories. Do not wear slippers or open-toed footwear.

Always unplug the appliance after use and before any cleaning or maintenance.

Warning: Danger of scalding. Please use care when using the appliance. Ensure that the appliance has cooled fully after use, before cleaning or storing away.

Additional Risks

Additional risks may arise when using this appliance, which may not be stated in the previous safety instructions. These risks can arise from misuse or prolonged operation of the appliance.

Even when following the basic safety instructions highlighted in this manual, some risks cannot be avoided. These include injury from touching hot surfaces, changing accessories or using the appliance for a long period of time. It is recommended that you take regular breaks during prolonged use of the appliance.

Please read all of the instructions carefully before use and retain for future reference.

Getting Started

Remove the appliance from the box.

Remove any packaging from the appliance.

Place the packaging inside the box and store for future reference.

In the Box

Steam cleaner main body

Handle with cord clip

Tubes

Water tank

Measuring cup

Triangular mop head

2 microfibre pads

Carpet glider

Cleaning needle

Instruction manual

Features

1300 W steam power

350 ml removable water tank

Ready to use in 25 seconds

15 minutes of continuous steam

Dual purpose- cleans hard floors and refreshes carpets

Chemical free cleaning



Carpet glider enables the cleaning of carpets and rugs



2 mop head pads
lock in dirt



Chemical free cleaning
cleans without the use of chemicals, which can be harmful to your lungs and skin, as well as to pets



Cord storage
conveniently stores your cable cord



Removable handle
for easy storage



1300 W steam power
for fast heat up and steam power



350 ml removable water tank
for continuous fill during operation



Precision shaped mop head
cleans deep into corners



Instructions for Use

Before First Use

Before using the steam cleaner for the first time, ensure that it is switched off and unplugged from the mains power supply.

Clean the exterior surface of the steam cleaner with a soft, damp cloth and dry thoroughly.

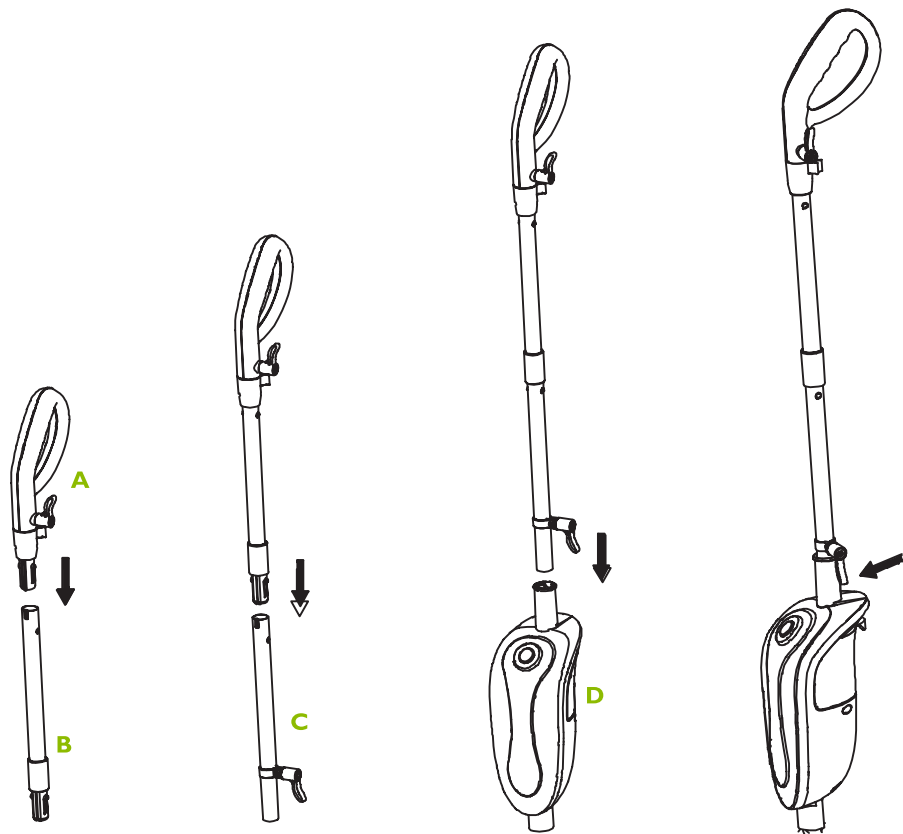
Assembly

Slide the Tube (B.) into the Handle (A.) until it clicks into place.

Slide the Tube (C.) into the Tube (B.) until it locks into position.

Slide the Tube (C.) into slot of main body (D.), until it clicks into place.

Note: The handle can be removed from the steam cleaner body for easy storage by pressing the handle release button(s).



Attaching the Steam Head

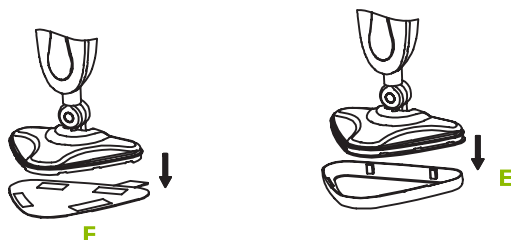
Slide the bottom end of the steam cleaner main body onto the triangular mop head until the triangular mop head spindle locks into place. Hold both parts of the steam cleaner and gently push the clip into the handle. This will lock the two parts into position.

Warning: Never force the steam cleaner main body onto the triangular mop head, as this could potentially damage the steam cleaner. Always attach the triangular mop head using both hands, ensuring that it clicks into place correctly.

The triangular mop head can be removed from the main steam cleaner body by pressing the button on the triangular mop head spindle.

Attaching a Microfibre Pad

Place the microfibre pad (F.) in between the triangular mop head (E.) and the carpet glider (G.) and press down firmly. This will hold the microfibre pad in place.



Filling the Water Tank

Remove the water tank from the steam cleaner main body, open the water tank cap anticlockwise, fill the water tank using the measuring cup then replace the cap by turning it clockwise. Install the water tank back onto the steam cleaner main body (D.) until it clicks into position.

Operation

Plug the steam cleaner into the mains power supply. When it turns on the indicator light will illuminate red to show that it is heating up.

The steam cleaner will take approximately 25 seconds to warm up. Once it has reached the correct temperature, the indicator light will change to blue; the steam cleaner is now ready to use.

Never allow the water in the tank to drop below the minimum level mark.

Care and Maintenance

Before attempting any cleaning or maintenance, always unplug the steam cleaner from the mains power supply and allow it to cool sufficiently.

Drain the remaining water from the water tank and clean after every use.

Wipe the steam cleaner main body clean with a soft, dry cloth. Never immerse the electrical components in water or any other liquid.

Do not use harsh or abrasive cleaners or detergents.

The microfibre pads are machine washable on a 'warm' setting. Always use a mild detergent and lay them flat to dry. Never use bleach or fabric softener when washing the micro-fibre pad.

To clean the calcium deposits that build up inside the water tank, add one or two tablespoons of white vinegar to a full water tank and close it. Shake the contents, then rinse thoroughly.

Note: Do not turn on the steam cleaner during cleaning.

Removing Limescale

If the steam cleaner begins to produce steam slower than usual or stops producing steam completely, you may need to remove limescale. Limescale can develop over time on the metal parts and greatly affects the performance.

It is necessary to remove limescale on a regular basis, every 25–50 times you use a full tank of water or at least once a month, especially in areas with hard water.

The frequency of limescale removal depends upon the hardness of your tap water and usage. To remove the limescale, prepare a solution of white vinegar and tap water and add it to the water tank.

Calcium deposits may be emitted with the steam. Please descale in a sink, bucket or towel to protect carpets etc.

Secure and position the steam cleaner to ensure that the steam released is aimed away from the floor or surrounding objects and surfaces.

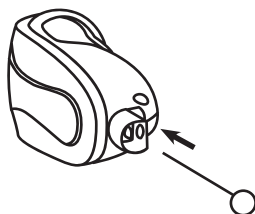
Plug the steam cleaner into the mains power supply and turn it on; allow it to produce steam until all of the solution is used.

Repeat the above procedure as often as necessary, then fill the tank with fresh water and rinse. Fill the tank to the maximum level with fresh water, switch it on and release steam until the water tank is empty.

Warning: Do not leave the steam cleaner unattended during the limescale removal process or during use. If there is a blockage in the steam nozzle, use the cleaning needle to clean the blockage along with the descaling solution. Insert the cleaning needle into the steam nozzle hole to clear the blockage, as shown in the image below.

After using the cleaning needle, add the descaling solution to the tank and follow the steps above.

Note: Ensure that the steam cleaner is switched off and has cooled fully.



Troubleshooting

Problem	Cause	Solution
Reduced steam or no steam.	The water tank may be empty. The steam nozzle may be blocked. There is no power to the steam cleaner. There may be a limescale build-up.	Add water to refill the water tank. Clean the steam mop's nozzle. Make sure the steam cleaner is plugged in to the mains power supply. Descale the steam cleaner using the instructions in the 'Remove Limescale' section.
Does not turn on.	Blown fuse or breaker. The power cord is not plugged in. The internal fuse has blown.	Check the fuse by replacement or reset the breaker. Plug the power cord into a working mains power supply. Contact customer service for further advice.

Storage

Before storing the steam cleaner, ensure that it has cooled and dried fully.

Ensure that the water tank is empty.

Remove the microfibre pad and wash ready for next use.

Store in a clean, dry place.

Specifications

Rated voltage: 220-240 V~ 50 Hz

Output power: 1300 W

Water tank capacity: 350 ml

Waterproof level: IPX4

Connection to the mains

Please check that the voltage indicated on the product corresponds with your supply voltage.

Important

As the colours in the mains lead of this appliance may not correspond with the coloured markings identifying the terminals in your plug, please proceed as follows:

The wires in the mains lead are coloured in accordance with the following code:

Blue Neutral (N)

Brown Live (L)

Green/Yellow Earth (\perp)

FOR UK USE ONLY - Plug fitting details (where applicable).

The wire coloured BLUE is the NEUTRAL and must be connected to the terminal marked N or coloured BLACK.

The wire coloured BROWN is the LIVE wire and must be connected to the terminal marked L or coloured RED.

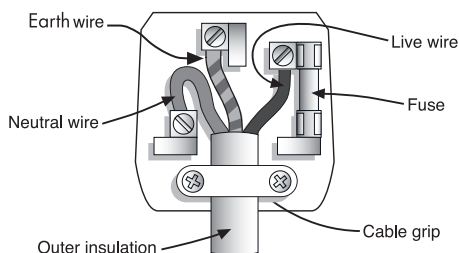
The wire coloured GREEN/YELLOW must be connected to the terminal marked with the letter E or marked \perp .

On no account must either the BROWN or the BLUE wire be connected to the EARTH terminal (\perp).

Always ensure that the cord grip is fastened correctly.

The plug must be fitted with a fuse of the same rating already fitted and conforming to BS 1362 and be ASTA approved.

If in doubt consult a qualified electrician who will be pleased to do this for you.



Non-rewireable mains plug

If your appliance is supplied with a non-rewireable plug fitted to the mains lead and should the fuse need replacing, you must use an ASTA approved one (conforming to BS 1362 of the same rating).

If in doubt, consult a qualified electrician who will be pleased to do this for you.

If you need to remove the plug - DISCONNECT IT FROM THE MAINS and then cut it off the mains lead and immediately dispose of it safely. Never attempt to reuse the plug or insert it into a socket outlet as there is a danger of an electric shock.

UP Global Sourcing

Victoria Street, Manchester OL9 0DD. UK.

If this product does not reach you in an acceptable condition please contact our Customer Services Department by one of the following methods:

Telephone: +44 (0)161 934 2240*

*Telephone lines are open Monday – Friday, 9 am – 5 pm (Closed Bank Holidays)

Email: customersupport@beldray.co.uk

Fax: 0161 628 2126

Please have your delivery note to hand as details from it will be required.

If you wish to return this product please return it to the retailer from where it was purchased with your receipt (subject to their terms and conditions).

Guarantee

This product is guaranteed for a period of 1 year from the date of purchase against mechanical and electrical defects.

This guarantee is only valid if the appliance is used solely for domestic purposes in accordance with the instructions and provided that it is not connected to an unsuitable electricity supply or dismantled or interfered with in any way or damaged through misuse. Under this guarantee we undertake to repair or replace free of charge any parts found to be defective. Reasonable proof of purchase must be provided.

Nothing in this guarantee or in the instructions relating to this product excludes, restricts or otherwise affects your statutory rights.

In line with our policy of continuous development we reserve the right to change this product, packaging and documentation specification without notice.

Consumables are not guaranteed i.e. plug and fuse.

The crossed out wheelie bin symbol on this item indicates that this appliance needs to be disposed of in an environmentally friendly way when it becomes of no further use or has worn out. Contact your local authority for details of where to take the item for recycling.



Disposal	
 CARD	 PLASTIC
PACKAGING widely recycled	PACKAGING not currently recycled

Imported and Distributed by:
UP Global Sourcing,
Victoria Street, Manchester, OL9 0DD, UK.
+44 (0)161 934 2240
customersupport@beldray.co.uk

© 2014 Beldray Trademark. All rights reserved.

Please retain all instructions for future reference.
Made in China.
CD201614/MD000000/V1