

Beldray

Est 1872

Nobody Does It Better

12V Wet and Dry Vac Instruction Manual



Brush tool for curtains,
upholstery and fabrics



Crevice tool for all
those awkward places



Wall mounted stand
for easy storage



THE **SCIENCE**
BEHIND CLEAN

Please read all instructions carefully and retain for future reference.

Getting Started

Remove the vacuum from the box.

Remove any packaging from the product.

Place the packaging inside the box and either store or dispose of safely.

In the Box

Vacuum Cleaner with Filter

Mains Adaptor

Wall Bracket/Holder

Crevice Nozzle

Brush Attachment

Rubber Nozzle

Features

Wet and dry operation – useful for mopping up spills

Wall mountable storage

Washable filter

Safety Instructions

When using electrical appliances, basic safety precautions should always be followed.

Check that the voltage indicated on the data plate corresponds with that of the local network before connecting the appliance to the mains power supply.

This appliance is not intended for use by persons (including children) with reduced physical, sensory or mental capabilities or lack of experience or knowledge. They should be given supervision and instruction in the use of the appliance by a person responsible for their safety. Children should be supervised to ensure they do not play with the appliance.

If the supply cord or adaptor is damaged, it must be replaced by a qualified engineer in order to avoid a hazard.

Do not use this appliance with wet hands.

Do not use this appliance if any of the openings are blocked.

Keep free of dust, lint, hair or anything that may reduce the airflow of the appliance.

Do not use this appliance without the dust container and filter in position.

Ensure the dust filter is regularly cleaned.

Do not use this appliance with an extension lead.

Remove the adaptor from the supply if the vacuum cleaner will not be used for a lengthy period of time e.g. going on holiday.

Do not use the appliance to pick up flammable liquids, matches, cigarette ends, hot ashes or any hot, burning or smoking objects.

Do not immerse the appliance in water or any other liquids.

Use extreme caution if vacuuming a flight of stairs.

Do not operate the appliance after a malfunction or if it has been dropped or damaged in any way.

Do not remove the mains adaptor by pulling the cord, remove the plug from the socket by hand.

The appliance must be unplugged from the power supply whilst any maintenance such as cleaning is carried out.

Do not use the appliance for any purpose other than that for which it has been designed.

Ensure the supply cord is kept away from heat or sharp edges that could cause damage.

This appliance is intended for domestic use only. It should not be used for commercial purposes.

Do not use this appliance to pick up hard, sharp objects such as glass or nails etc.

Do not leave the appliance unattended whilst switched on.

Only the accessories recommended or sold by the manufacturer should be used with this vacuum.

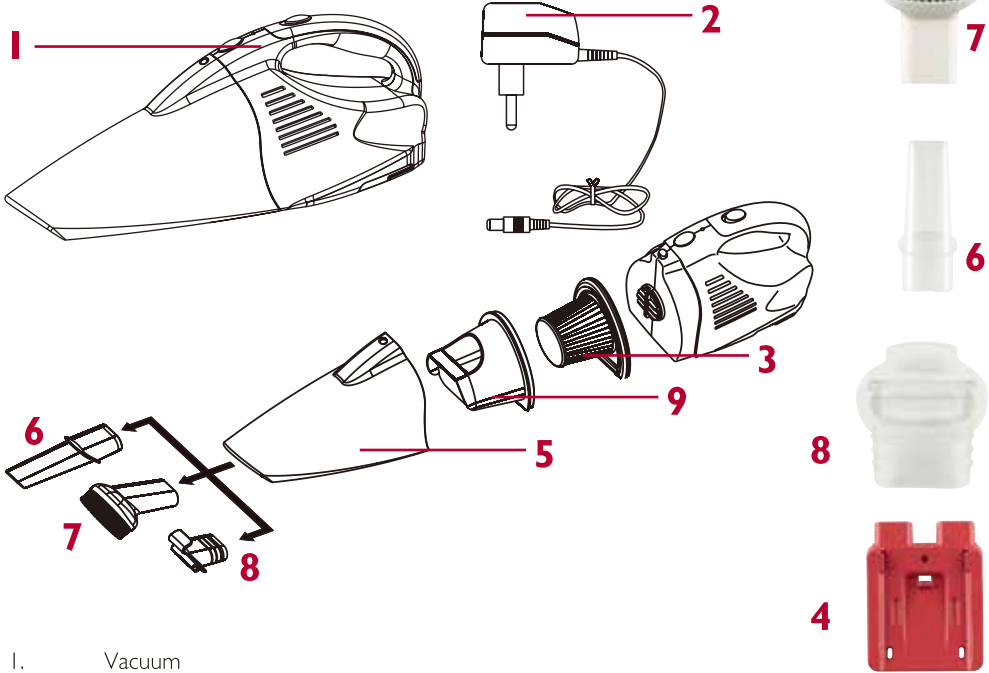
This appliance contains no user-serviceable parts. All repairs should only be carried out by a qualified engineer. Improper repairs may place the user at risk of harm.

Keep out of reach of children.

If the supply cord or plug is damaged, it must be replaced by a qualified engineer in order to avoid a hazard.

This appliance is not intended to be operated by means of an external timer or a separate remote control system.

Description of Parts



- 1. Vacuum
- 2. Charger
- 3. Filter
- 4. Wall Mounted Stand
- 5. Dust Bin
- 6. Crevice Nozzle
- 7. Round Brush
- 8. Rubber Nozzle
- 9. Waterproof Shelter



Instructions for Use

Installing the Wall Bracket/Holder

The wall bracket should be located close to a mains socket so it is within reach of the charger cable.

Caution: ensure there are no electrical, plumbing or gas supplies under the wall surface. These services normally run vertically or horizontally and the electrical wiring will radiate from the socket (possibly in more than one direction). Testers are available from good DIY stores but if any doubt, consult a qualified professional.

Once the position has been decided and checked, hold the bracket to the wall and mark the positions of the holes with a pencil.

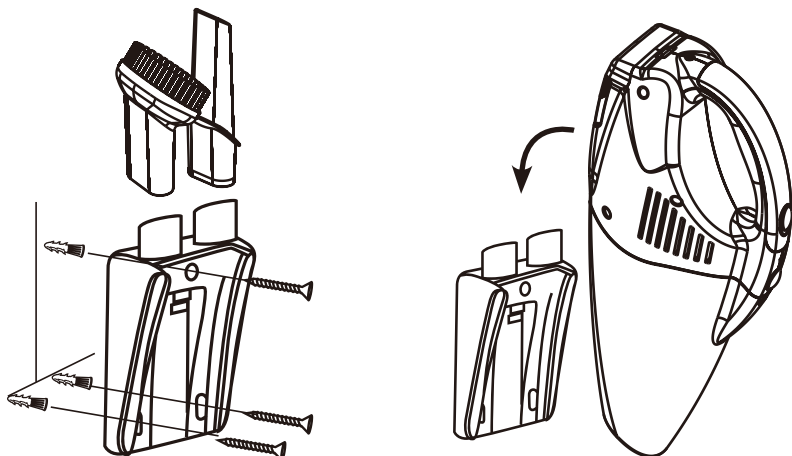
Drill the holes to a suitable diameter and use wall fixings suitable for the structure of the wall. If in any doubt, consult a qualified professional.

Attach the bracket securely to the wall using the screws.

Plug the adaptor into the mains power socket.

Store the attachments on the wall bracket and slide the cleaner onto the bracket ensuring it engages with the supporting ribs.

Connect the power lead from the charger to the rear of the cleaner.



Before first use, the vacuum cleaner should be charged for 24 hours. Subsequent charge times will vary dependant on use but if the unit is completely run down during use, charging may take between 10 and 12 hours.

Using the Vacuum Cleaner

Clip the vacuum cleaner onto the bracket and connect the power adaptor (if you are not using the bracket, the adaptor plug will connect directly to the end of the cleaner).

Plug the adaptor into the mains power supply and switch on.

The indicator light will illuminate red to indicate that the battery is charging. When the battery is fully charged the indicator light will illuminate green.

The vacuum cleaner can take up to 24 hours to fully charge initially.

Whilst charging, the vacuum case will become warm.

To use the vacuum cleaner, remove the charging lead from the end of the cleaner and slide it from the wall bracket. Slide the On/Off switch forward to switch on.

The crevice attachment can be used for picking up fine particles or for cleaning narrow openings. The brush attachment is ideal for cleaning upholstery and the rubber nozzle is perfect for cleaning up spills.

Note: when using the vacuum cleaner to pick up spillages such as water or tea, ensure the liquid is emptied as soon as possible.

Caution: do not use the vacuum cleaner to pick up flammable liquids.

Do not mix wet and dry functions; ensure the dust container is empty of any debris before attempting to clean up liquids and thoroughly dried before dry vacuuming.

Emptying the Dust Container

The dust container must be emptied regularly but especially when suction power is reduced or the dust level reaches the Max mark.

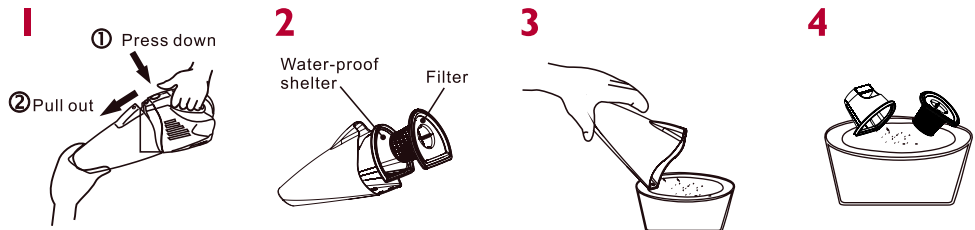
Hold the vacuum cleaner with the dust container facing downwards. Press the release button and remove the container from the main unit.

Remove the filter assembly and water-proof cover then empty the dust container.

Refit the cover and filter assembly. If necessary, clean the individual parts and shake out any excess particles from the filter.

It is recommended that the filter and bin are thoroughly cleaned once a month by rinsing the bin and cleaning the filter in cold water (do not use detergent).

Allow to dry completely before refitting.



Do's and Don'ts

Ensure the filters are kept unblocked.

Do not use the vacuum cleaner to pick up flammable liquids.

After vacuuming liquids keep the nozzle directed downwards and empty immediately.

Troubleshooting

Symptom	Possible Cause	Solution
Cleaner does not charge.	Charger not connected.	Ensure the connector is correctly fitted to the vacuum cleaner and power is switched on.
Poor suction.	Blocked nozzle. Dust container full. Blocked filter.	Remove the nozzle and remove any obstructions. Empty the dust container. Clean the filter.

Cleaning and Maintenance

The main body of the vacuum cleaner must not be immersed in water or any other liquids.

The bin, cover and filter can be cleaned using cold water.

Wipe the main body with a damp, soft cloth.

Do not use any form of solvent or abrasive cleaning agents.

Technical Specification

Mains supply: 230V 50Hz

Battery: 12V 2.6Ah Sealed Lead Acid

Battery Removal and Disposal

The vacuum cleaner is fitted with a sealed lead acid battery which must be disposed of correctly and recycled through your local authority's designated sites at the end of product life.

To remove the battery from the vacuum cleaner, carefully unscrew the 2 screws holding the battery cover on the base of the unit then slide the cover off. Remove the battery and unclip the live and neutral terminal connections.

Caution:

Avoid short circuit of the battery terminals.

Keep the battery away from extreme heat.

Do not dispose of the battery in a fire.

Do not use the battery with any other product.

UP Global Sourcing

Manchester, OL9 0DD

If this product does not reach you in an acceptable condition please contact our Customer Services Department by one of the following methods:

Telephone: +44 (0)333 577 9820*

*Telephone lines are open Monday – Friday, 9am – 5pm (Closed Bank Holidays)

Email: customersupport@beldray.co.uk

Fax: 0161 628 2126

Please have your delivery note to hand as details from it will be required.

If you wish to return this product please return it to the retailer from where it was purchased with your receipt (subject to their terms and conditions).

Guarantee

This product is guaranteed for a period of 1 year from the date of purchase against mechanical and electrical defects.

This guarantee is only valid if the appliance is used solely for domestic purposes in accordance with the instructions and provided that it is not connected to an unsuitable electricity supply or dismantled or interfered with in any way or damaged through misuse. Under this guarantee we undertake to repair or replace free of charge any parts found to be defective. Reasonable proof of purchase must be provided.

Nothing in this guarantee or in the instructions relating to this product excludes, restricts or otherwise affects your statutory rights.

In line with our policy of continuous development we reserve the right to change this product, packaging and documentation specification without notice.

Consumables are not guaranteed i.e. plug and fuse.

The crossed out wheellie bin symbol on this item indicates that this appliance needs to be disposed of in an environmentally friendly way when it becomes of no further use or has worn out. Contact your local authority for details of where to take the item for recycling.



Distributed by:
UP Global Sourcing,
Manchester,
OL9 0DD
+44 (0)333 577 9820
customersupport@beldray.co.uk

Please retain all instructions for future reference.
Made in China.
CD110811/MD120213/V2