

Beldray[®]

Est 1872

Nobody Does It Better

Tri Steam Lite

Instruction Manual



THE **SCIENCE**
BEHIND CLEAN



www.beldray.com

Please read all of the instructions carefully and retain for future reference.

Safety Instructions

When using electrical appliances, basic safety precautions should always be followed.

Check that the voltage indicated on the rating plate corresponds with that of the local network before connecting the appliance to mains power supply.

This appliance can be used by people with reduced physical, sensory or mental capabilities or lack of experience and knowledge can use this appliance, only if they have been given supervision or instruction concerning use of the appliance in a safe way and understand the hazards involved.

Children should be supervised to ensure that they do not play with the appliance.

Children should not perform cleaning or user maintenance.

This appliance contains no user serviceable parts. Only a qualified electrician should attempt repairs. Improper repairs may place the user at risk of harm.

If the supply cord or plug is damaged or broken in any way, do not use the appliance until it has been inspected and repaired by a qualified electrician. Keep the supply cord out of reach of children.

Keep the supply cord away from heat or sharp edges that could cause damage.

Keep the appliance out of reach of children when it is in use or when it is cooling down.

Do not pull or carry the appliance by its supply cord.

Never pull the power cord to disconnect the appliance from the mains power socket.

Do not immerse the appliance in water or any other liquid.

Do not expose the appliance to rain.

Do not handle the appliance with wet hands.

Do not touch any parts of the appliance that may become hot during use.

Do not use the appliance after a malfunction or if it has been dropped, damaged or if there are visible signs of damage or if it is leaking.

Do not leave the appliance unattended whilst connected to the mains power supply.

Do not use the appliance for anything other than its intended use.

Do not use outdoors.

Do not direct steam at people or animals.

Do not direct steam towards equipment containing electrical components, such as the interior of ovens.

Do not use the appliance in an enclosed space filled with vapour given off by oil-based paint thinners, some mothproofing substances, flammable dust or other explosive or toxic vapours.

Do not use the appliance on leather, wax polished furniture or floors, kamdean floors, synthetic fabrics, velvet or other delicate, steam-sensitive materials.

Do not use on any unsealed hard floor surfaces or surfaces that have been treated with wax as the sheen may be removed by the heat and steam action.

Do not use the appliance if the microfibre cleaning cloth is not installed correctly.

It is always recommended to test an isolated area of the surface to be cleaned before proceeding.

Never force the steam unit onto the mop head as this could potentially damage the steam mop.

Never add descaling, aromatic, alcoholic or detergent products into the appliance, as this may damage the appliance or make it unsafe for use.

Never leave the appliance stationary on a floor area for longer than 15 seconds.

Always unplug the appliance after use and before any cleaning or maintenance. Ensure that the appliance has cooled fully after use, before cleaning or storing away.

This appliance should not be operated by means of an external timer or separate remote control system.

This appliance is intended for household use only. It should not be used for commercial purposes.

Caution: The appliance emits very hot steam; always exercise extreme caution during use.

Caution: Always wear suitable shoes when using the appliance and when changing the accessories. Do not wear slippers or open-toed footwear.

Warning: Danger of scalding. Please use care when using the appliance.

Additional Risks

Additional risks may arise when using this appliance, which may not be stated in the previous safety instructions. These risks can arise from misuse or prolonged operation of the appliance.

Even when following the basic safety instructions highlighted in this manual, some risks cannot be avoided. These include injury from touching hot surfaces, changing accessories or using the appliance for a long period of time. It is recommended that you take regular breaks during prolonged use of the appliance.



Steam



Caution: Hot surface

Getting Started

Remove the appliance from the box.

Remove any packaging from the appliance.

Place the packaging inside the box and either store or dispose of safely.

In The Box

Steam cleaner main body

Handle

Precision shaped mop head

Carpet glider

Mop head cloth

Measuring cup

Funnel

Instruction manual

Features

1300 W steam power

450 ml easy-fill water tank

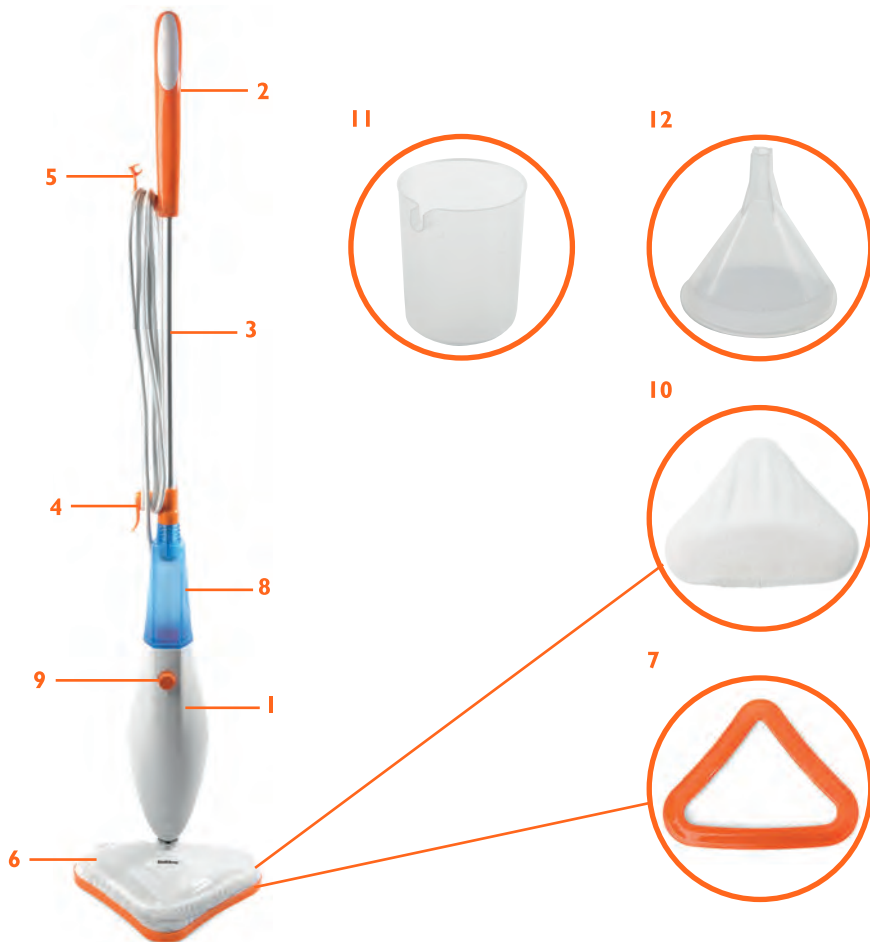
Ready to use in 30 seconds

10–15 minutes of continuous steam

Dual purpose – cleans hard floors and refreshes carpet

Chemical-free cleaning

Description of Parts



1. Steam cleaner main body
2. Handle with cord clip
3. Extension tube
4. Lower cord storage clip
5. Upper cord storage clip
6. Precision shaped mop head

7. Carpet glider
8. 450 ml easy-fill water tank
9. On/Off switch
10. Mop head cloth
11. Measuring cup
12. Funnel

Before First Use

Before using the Tri Steam Lite for the first time, ensure that it is switched off and unplugged from the mains power supply.

Clean the exterior surface of the steam cleaner with a soft, damp cloth and dry thoroughly.

Assembling the Tri Steam Lite

Attaching the Handle

STEP 1: Insert the handle into the extension tube until it locks into position (figure 1).

STEP 2: Insert the assembled handle section into the steam cleaner main body until it clicks into place (figure 2).

Note: The assembled handle section can be removed from the steam cleaner body for easy storage by pressing the handle tube button.

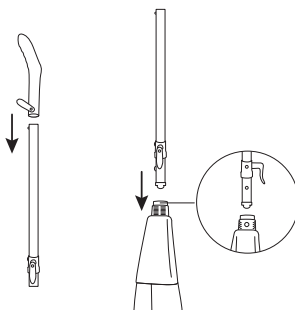


Figure 1 Figure 2

Attaching the Precision Shaped Mop Head

Slide the bottom end of the steam cleaner main body onto the precision shaped mop head (figure 3).

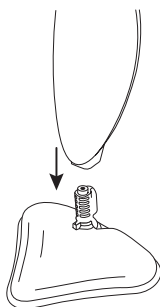


Figure 3

Attaching the Microfibre Mop Head Cloth

Attach the mop head cloth onto the bottom of the precision shaped mop head by placing it onto the base and pulling it around the edges. The elastic hem will hold the mop head cloth into position. To remove, simply pull the mop head cloth from the precision shaped mop head.

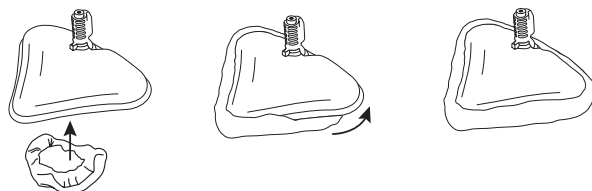


Figure 4

Attaching the Carpet Glider

Lay the carpet glider flat on the carpet, then place the precision shaped mop head with the mop head cloth attached (see the section entitled 'Attaching the Microfibre Mop Head Cloth'), into the carpet glider. The precision shaped mop head simply sits in the carpet glider to enable the steam cleaner to move easily across the carpet. If the flooring is uneven, the carpet glider may dislodge.

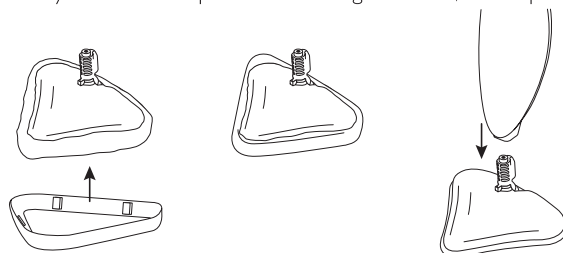


Figure 5

Instructions for Use

Filling the Water Tank

STEP 1: Unplug the steam cleaner from the mains power supply and remove the extension tube from the water tank by pressing and holding the handle tube button and pulling the handle tube.

STEP 2: Fill the measuring cup up to the 225 ml mark and then, using the funnel, pour the contents of the measuring cup into the water tank at the top of the steam cleaner main body.

STEP 3: Repeat the procedure in order to ensure that the water tank is filled to the maximum 450 ml capacity.

Note: The water may take a couple of seconds to rise to the 450 ml level, so allow time for the water to rise before adding in more water to ensure that you do not overfill the water tank.

Warning: Never place descaling, aromatic, alcoholic or detergent products into the steam cleaner tank, as this will cause damage to the steam cleaner and void your warranty.

Filling the Tank During Use

STEP 1: Ensure that the steam operation is deactivated by turning the 'On/Off' switch to the 'Off' position.

STEP 2: Open the tank and then pour in the water using the measuring cup and funnel.

STEP 3: To reactivate the steam operation, turn the 'On/Off' switch to the 'On' position.

Using the Tri Steam Lite

Plug in and switch on the steam cleaner at the mains power supply.

To heat up the steam cleaner, turn the 'On/Off' switch to the 'On' position; the water tank will illuminate red when the steam cleaner is heating up and blue when it is producing steam and is ready to use. If the light does not illuminate, please check the section entitled 'Troubleshooting' for more information.

It will take approximately 30 seconds for the steam cleaner to preheat.

A full tank of water will supply approximately 10–15 minutes of steam.

Removing/Cleaning the Microfibre Mop Head Cloth

Ensure that the mains power supply is switched off, then unplug the mains power cord from the mains power supply. Allow the precision shaped mop head and mop head cloth to cool, then carefully remove the mop head cloth from the precision shaped mop head.

Cleaning and Maintenance

Before attempting any cleaning or maintenance, always unplug the steam cleaner from the mains power supply and allow it to cool sufficiently.

Drain the remaining water from the tank and clean after every use.

Clean the steam cleaner attachments in warm, soapy water and dry thoroughly.

Wipe the steam cleaner main body with a soft, dry cloth.

Do not use harsh or abrasive cleaners, detergents or scourers.

The mop head cloth is machine washable on a low heat setting. Always use a mild detergent and lay it flat to dry. Never use bleach or fabric softener when washing the mop head cloth.

Note: Do not turn on the steam cleaner during cleaning.

Warning: Never immerse any electrical components in water or any other liquid.

Decalcifying the Water Tank

To clean calcium deposits that build up inside the water tank, add one or two tablespoons of white vinegar to a full water tank, and gently swirl it, taking care that it does not spill out.

Allow this to sit for approximately one hour, then rinse and empty the water tank repeatedly until the water runs clear; this will avoid staining any surfaces that may come into contact with the steam cleaner.

Note: Do not turn the steamer on.

Removing Limescale

If the steam cleaner is releasing steam slower than usual or stops producing steam altogether, limescale may need to be removed.

Limescale can develop over time on the metal parts of the steam cleaner and will greatly affect its performance.

It is recommended to remove limescale on a monthly basis or after every 25–50 uses.

To remove limescale from the steam cleaner, please refer to the section entitled 'Using a Cleaning Solution'.

Using a Cleaning Solution

Prepare a solution of $\frac{1}{3}$ white vinegar and $\frac{2}{3}$ tap water and add to the water tank.

Plug the steam cleaner into the mains power supply and turn it on, then allow the steam cleaner to produce steam until all of the solution has been used.

Repeat the above procedure as often as necessary to complete the cleaning process, then fill the tank with fresh water and rinse thoroughly.

Fill the tank with fresh water one final time, then release steam through the system until the water tank is empty.

Note: Calcium deposits may be emitted along with the steam. Please descale in a sink, bucket or towel to protect carpets and other surfaces.

Note: Perform a test with the steam cleaner on a small surface area after the limescale removal process has been completed, to ensure that there is no debris left in the unit.

Note: Due to the nature of UK water supplies, some areas of the country experience larger amounts of limescale build-up. Depending upon the area in which you live, you may need to perform the limescale removal process more often.

Warning: Do not leave the steam cleaner unattended during the limescale removal process and/or during use.

Storage

Before storing the steam cleaner, ensure that it has cooled and dried fully.

Check that the water tank is empty.

Remove the mop head cloth, making sure that it has been cleaned according to the instructions in the 'Cleaning and Maintenance' section.

Store in a clean, dry place.

Troubleshooting

Warning: To reduce the risk of fire, electric shock or injury, unplug the steam cleaner from the mains power supply before troubleshooting.

Problem	Possible Reason	Possible Solution
Reduced or no steam.	<p>The water tank may be empty.</p> <p>The steam nozzle may be blocked.</p> <p>There is no power to the steam cleaner.</p> <p>There may be a limescale build-up.</p>	<p>Add water to refill the water tank.</p> <p>Clean the steam nozzle.</p> <p>Make sure that the steam cleaner is plugged into the mains power supply.</p> <p>Descale the steam cleaner using the instructions in the 'Removing Limescale' section.</p>
The steam cleaner does not turn on.	<p>There is a blown fuse or breaker.</p> <p>The power cord is not plugged in.</p> <p>The internal fuse is blown.</p>	<p>Check the fuse by replacement or reset the breaker.</p> <p>Plug the power cord into a working mains power supply.</p> <p>Contact customer service for further advice.</p>

Specification

Product code: BEL043 I
 Rated Voltage: 220–240 V
 Rated Frequency: 50 Hz
 Output Power: 1300 W
 Water Tank Capacity: 450 ml
 Waterproof Level: IPX4

Connection to the mains

Please check that the voltage indicated on the product corresponds with your supply voltage.

Important

As the colours in the mains lead of this appliance may not correspond with the coloured markings identifying the terminals in your plug, please proceed as follows:

The wires in the mains lead are coloured in accordance with the following code:

Blue Neutral (N)

Brown Live (L)

Green/Yellow Earth ($\frac{\perp}{\equiv}$)

FOR UK USE ONLY - Plug fitting details (where applicable).

The wire coloured BLUE is the NEUTRAL and must be connected to the terminal marked N or coloured BLACK.

The wire coloured BROWN is the LIVE wire and must be connected to the terminal marked L or coloured RED.

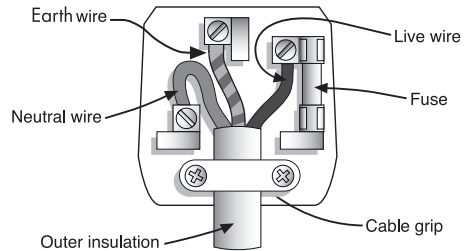
The wire coloured GREEN/YELLOW must be connected to the terminal marked with the letter E or marked $\frac{\perp}{\equiv}$.

On no account must either the BROWN or the BLUE wire be connected to the EARTH terminal ($\frac{\perp}{\equiv}$).

Always ensure that the cord grip is fastened correctly.

The plug must be fitted with a fuse of the same rating already fitted and conforming to BS 1362 and be ASTA approved.

If in doubt consult a qualified electrician who will be pleased to do this for you.



Non-rewireable mains plug

If your appliance is supplied with a non-rewireable plug fitted to the mains lead and should the fuse need replacing, you must use an ASTA approved one (conforming to BS 1362 of the same rating).

If in doubt, consult a qualified electrician who will be pleased to do this for you.

If you need to remove the plug - DISCONNECT IT FROM THE MAINS and then cut it off the mains lead and immediately dispose of it safely. Never attempt to reuse the plug or insert it into a socket outlet as there is a danger of an electric shock.

UP Global Sourcing

Victoria Street, Manchester OL9 0DD. UK.

If this product does not reach you in an acceptable condition please contact our Customer Services Department by one of the following methods:

Telephone: +44 (0)333 577 9820*

*Telephone lines are open Monday – Friday, 9 am–5 pm (Closed Bank Holidays)

Email: customersupport@beldray.co.uk

Fax: 0161 628 2126

Please have your delivery note to hand as details from it will be required.

If you wish to return this product please return it to the retailer from where it was purchased with your receipt (subject to their terms and conditions).

Guarantee

This product is guaranteed for a period of 1 year from the date of purchase against mechanical and electrical defects.

This guarantee is only valid if the appliance is used solely for domestic purposes in accordance with the instructions and provided that it is not connected to an unsuitable electricity supply or dismantled or interfered with in any way or damaged through misuse. Under this guarantee we undertake to repair or replace free of charge any parts found to be defective. Reasonable proof of purchase must be provided.

Nothing in this guarantee or in the instructions relating to this product excludes, restricts or otherwise affects your statutory rights.

In line with our policy of continuous development we reserve the right to change this product, packaging and documentation specification without notice.

Consumables are not guaranteed i.e. plug and fuse.

The crossed out wheelie bin symbol on this item indicates that this appliance needs to be disposed of in an environmentally friendly way when it becomes of no further use or has worn out. Contact your local authority for details of where to take the item for recycling.



