

Beldray[®] Est 1872

Nobody Does It Better

Quick Vac Lite Instruction Manual



THE **SCIENCE**
BEHIND CLEAN



www.beldray.com

Please read all of the instructions carefully and retain for future reference.

Safety Instructions

When using electrical appliances, basic safety precautions should always be followed.

Check that the voltage indicated on the rating plate corresponds with that of the local network before connecting the appliance to the mains power supply.

Children aged from 8 years and people with reduced physical, sensory or mental capabilities or lack of experience and knowledge can use this appliance, only if they have been given supervision or instruction concerning use of the appliance in a safe way and understand the hazards involved.

Children should be supervised to ensure that they do not play with the appliance. Unless they are older than 8 and supervised, children should not perform cleaning or user maintenance.

This product is not a toy.

This appliance contains no user serviceable parts. If the power supply cord, plug or any part of the appliance is malfunctioning, or if it has been dropped or damaged, only a qualified electrician should carry out repairs. Improper repairs may place the user at risk of harm.

Keep the appliance out of reach of children.

Keep the appliance and its supply cord away from heat or sharp edges that could cause damage.

Keep the appliance free of dust, lint, hair or anything that may reduce the airflow of the appliance.

Do not use this appliance if any of the openings are blocked.

Do not use this appliance without the dust container and filter in position.

Do not use the appliance to pick up flammable liquids, matches, cigarette ends, hot ashes or any hot, burning or smoking objects.

Do not use this appliance to pick up hard, sharp objects such as glass or nails etc.

Do not use any accessories other than those supplied.

Do not fit any parts/accessories other than the parts supplied with this appliance, as this may damage the appliance.

Do not use the appliance to pick up water or any other liquid, as this poses risk of an electric shock.

Do not immerse the appliance in water or any other liquid.

Do not use the appliance for anything other than its intended use.

Do not use this appliance outdoors.

Do not remove from the mains power supply by pulling the cord; switch off and remove the plug by hand.

Do not store the appliance in direct sunlight or in high humidity conditions.

Do not leave the appliance unattended whilst connected to the mains power supply.

Ensure that the dust filter is regularly cleaned to preserve the suction of the appliance.

Always unplug the appliance after use and before any cleaning or maintenance.

Use of an extension cord with the appliance is not recommended.

This appliance should not be operated by means of an external timer or separate remote control system.

This appliance is intended for domestic use only. It should not be used for commercial purposes.



This product is fitted with a thermal cut-out, which will activate if the motor overheats due to blocked air inlets. If the appliance cuts out, allow it to cool for 1 hour, then empty the dust container and clean all of the filters.

Getting Started

Remove the appliance from the box.

Remove any packaging from the appliance.

Place the packaging inside the box and either store or dispose of safely.

In the Box

Quick Vac Lite

Telescopic extension tube

Accessory attachment nozzle

Floor brush

Crevice tool

Brush tool

Instruction manual

Features

600 W high efficiency motor

Dual cyclone technology

Converts to a handheld unit

Powerful suction

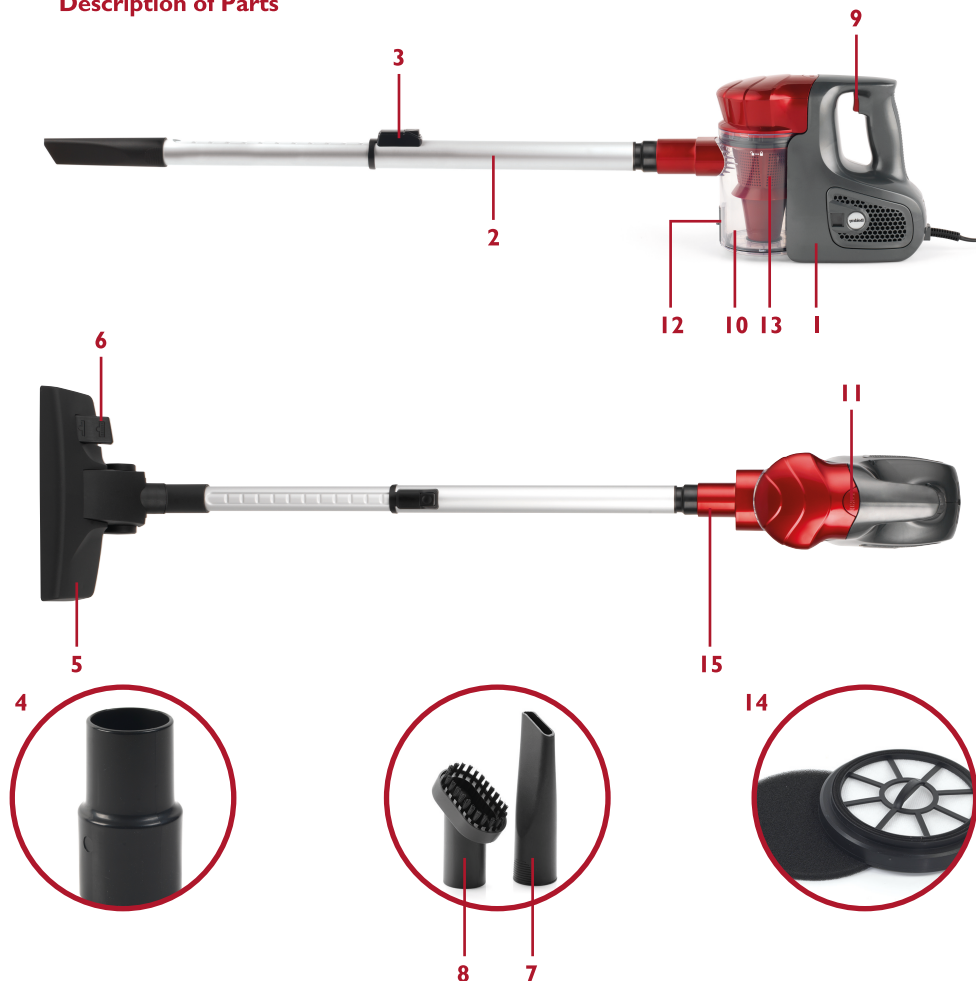
500 ml dust tank capacity

Washable filter

5 m power cord

Includes brush and crevice tool

Description of Parts



- | | |
|-------------------------------------|--------------------------------------|
| 1. Quick Vac Lite unit | 9. ON/OFF trigger switch |
| 2. Telescopic extension tube | 10. 0.5 litre removable dust tank |
| 3. Telescopic extension tube button | 11. Dust tank release switch |
| 4. Accessory attachment nozzle | 12. Dust tank empty lever |
| 5. Floor brush | 13. Removable exhaust filter housing |
| 6. Floor brush position switch | 14. Washable filter |
| 7. Crevice tool | 15. Air inlet |
| 8. Brush tool | |

Instructions for Use

Before First Use

Remove the transit packaging from the telescopic extension tube.

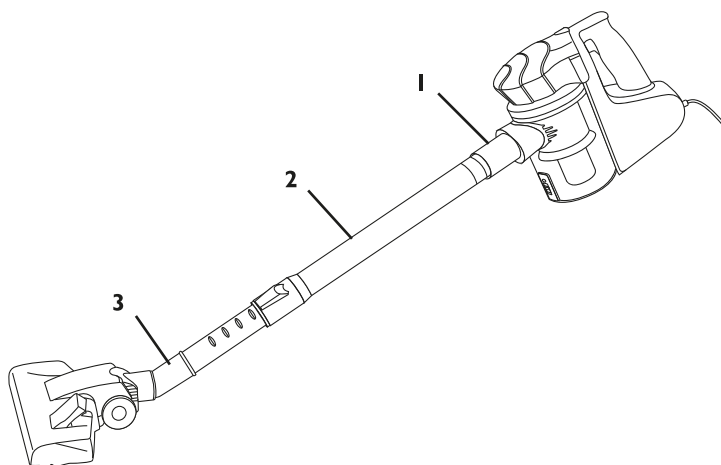
Before using the Quick Vac Lite for the first time, clean it with a soft, damp cloth and dry thoroughly.

Do not immerse the Quick Vac Lite in water or any other liquid.

Assembling the Quick Vac Lite

Using the Telescopic Extension Tube

The Quick Vac Lite comes preassembled. If there are any hard to reach or narrow areas then the telescopic extension tube is ideal. The accessory attachment nozzle needs to be fitted into position on the air inlet (1), followed by the telescopic extension tube (2) and lastly, the required cleaning attachment (3).



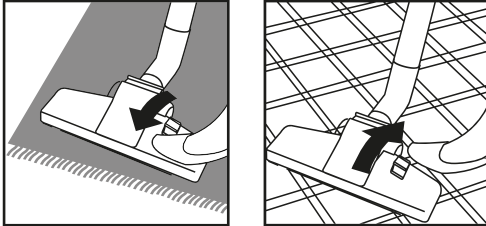
Using the Floor Brush

STEP 1: Fit the accessory attachment nozzle onto the air inlet, followed by the telescopic extension tube.

STEP 2: Push the floor brush attachment onto the end of the telescopic extension tube.

STEP 3: Adjust the telescopic extension tube to the required length by pressing the telescopic extension tube button down and sliding out the tube.

STEP 4: Select which position on the floor brush is required for the floor type by pressing the switch forwards or backwards. Switching it forwards lifts the brushes for use on carpet and switching it backwards lowers the brushes for cleaning hard floors.



STEP 5: Turn on the Quick Vac Lite by pressing in the 'ON/OFF' trigger switch.

Using the Crevice or Brush Tool

STEP 1: Fit the accessory attachment nozzle onto the air inlet, followed by the telescopic extension tube, if using.

STEP 2: Select which attachment is to be used and push it onto the end of the telescopic extension tube or onto the end of the accessory attachment nozzle if the telescopic extension tube is not being used.

STEP 3: Turn on the Quick Vac Lite by pressing in the 'ON/OFF' trigger switch.

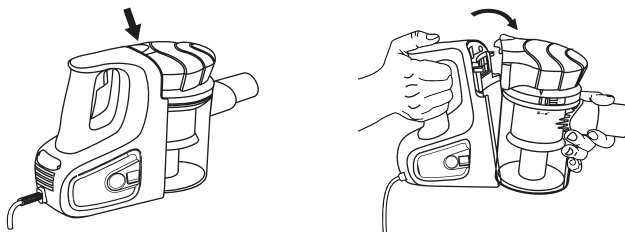
Note: The crevice tool is ideal for removing dust and dirt from folds in fabrics, radiators, corners, recesses or other places that are hard to reach. The small brush is great for cleaning curtains, shelves, books and other delicate objects.

Emptying the Dust Tank

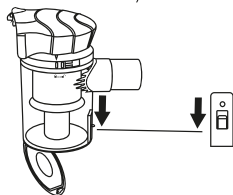
STEP 1: To turn the Quick Vac Lite off, press in the 'ON/OFF' trigger switch.

STEP 2: Unplug the Quick Vac Lite from the mains power supply.

STEP 3: Remove the dust tank by pressing the dust tank release switch and pulling the dust tank away from the Quick Vac Lite.



STEP 4: To empty the dust tank, release the dust tank hatch by pressing the dust tank empty lever down whilst holding it over a bin or rubbish bag. Shake the Quick Vac Lite dust tank gently to remove any remaining dust.



STEP 5: To close the dust tank again, simply push the lid closed until it locks back into place.

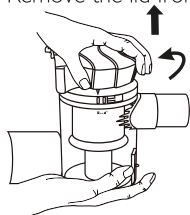
STEP 6: Replace the dust tank by aligning the bottom with the base of the Quick Vac Lite motor unit. Push the dust container in towards the motor unit until it locks back into position.

Care and Maintenance

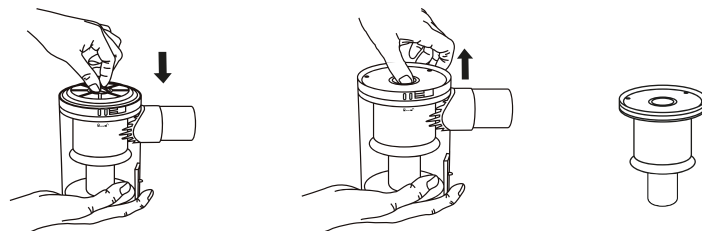
Wipe the external surface of the Quick Vac Lite with a soft, damp cloth and allow to dry thoroughly. Do not use any detergents or harsh cleaning agents to clean any part of the Quick Vac Lite. Ensure that the filter is kept clean and is cleaned after every removal of the dust tank. To clean the inside of the dust tank it is possible to remove the centre filter.

Cleaning the Removable Filter

STEP 1: The removable filter can only be accessed when the dust tank is open. Remove the dust tank by pressing the dust tank release switch and pulling it away from the Quick Vac Lite. Remove the lid from the dust tank by rotating it anticlockwise and lifting it off.



STEP 2: Pull the filter housing away from the dust tank by using the handle. When the filter housing has been removed from the dust tank, the removable filter can be taken out of the filter housing.



STEP 3: Shake off the removable filter until the majority of the dust has been removed, then wash the removable filter under clean, warm water and allow it to dry thoroughly.

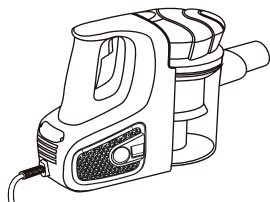
STEP 4: Once the removable filter has dried fully, slot it back into the filter housing and replace the filter housing into the dust tank.

Note: Do not clean the removable filter using detergent.

Note: Do not use external heat sources, such as a radiator to dry the removable filter.

Cleaning the Exhaust Filter

STEP 1: To remove the exhaust filter for cleaning, press down the clip on the side of the exhaust filter housing and lift the cover away.



STEP 2: Remove the exhaust filter from the exhaust filter housing.



STEP 3: Shake off the exhaust filter until the majority of the dust has been removed, then wash the exhaust filter under clean, warm water and allow it to dry thoroughly.

STEP 4: Once the exhaust filter has dried fully, slot it back into the exhaust filter housing and replace the exhaust filter housing cover.

Note: Do not clean the exhaust filter using detergent.

Note: Do not use external heat sources, such as a radiator to dry the exhaust filter.

Dos and Don'ts

Do ensure that the dust container, removable filter and exhaust filter are kept clean and regularly maintained to prolong the life of the Quick Vac Lite.

Do not use the Quick Vac Lite to pick up flammable liquids, matches, cigarette ends, hot ashes or any hot, burning or smoking objects.

Do not use the Quick Vac Lite to pick up water or any other liquid, as this poses risk of an electric shock.

Do not use the Quick Vac Lite if the dust tank is filled past the Max. fill mark, as this will put stress on the motor and may damage the Quick Vac Lite.

Troubleshooting

Symptom	Possible Cause	Solution
The suction is poor.	The tube or nozzle is blocked.	Disconnect the accessory and remove the blockage.
	The dust container is almost full.	Empty the dust container.
	The removable filter is blocked.	Clean the removable filter.
	The primary filtration device is blocked.	Remove the filtration device and clean.
The Quick Vac Lite has cut-out or stopped working.	The thermal cut-out device has activated due to restricted airflow.	Unplug the Quick Vac Lite from the mains power supply and allow it to cool for 1 hour. Empty the dust container and clean the filter.

Storage

Before storing the Quick Vac Lite, ensure that it is clean and all of the parts are dried fully. Store in a clean, dry place.

Specifications

Product code: BEL0580
Rated voltage: 220–240 V~50 Hz
Rated wattage: 600 W

Notes:

Connection to the mains

Please check that the voltage indicated on the product corresponds with your supply voltage.

Important

As the colours in the mains lead of this appliance may not correspond with the coloured markings identifying the terminals in your plug, please proceed as follows:

The wires in the mains lead are coloured in accordance with the following code:

Blue Neutral (N)

Brown Live (L)

FOR UK USE ONLY - Plug fitting details
(where applicable).

The wire coloured BLUE is the NEUTRAL and must be connected to the terminal marked N or coloured BLACK.

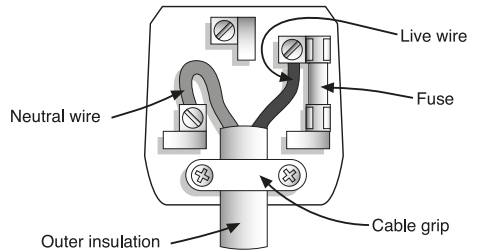
The wire coloured BROWN is the LIVE wire and must be connected to the terminal marked L or coloured RED.

On no account must either the BROWN or the BLUE wire be connected to the EARTH terminal (\perp).

Always ensure that the cord grip is fastened correctly.

The plug must be fitted with a fuse of the same rating already fitted and conforming to BS 1362 and be ASTA approved.

If in doubt consult a qualified electrician who will be pleased to do this for you.



Non-rewireable mains plug

If your appliance is supplied with a non-rewireable plug fitted to the mains lead and should the fuse need replacing, you must use an ASTA approved one (conforming to BS 1362 of the same rating).

If in doubt, consult a qualified electrician who will be pleased to do this for you.

If you need to remove the plug - DISCONNECT IT FROM THE MAINS and then cut it off the mains lead and immediately dispose of it safely. Never attempt to reuse the plug or insert it into a socket outlet as there is a danger of an electric shock.

UP Global Sourcing

Victoria Street, Manchester OL9 0DD. UK.

If this product does not reach you in an acceptable condition please contact our Customer Services Department by one of the following methods:

Telephone: +44 (0)333 577 9820*

*Telephone lines are open Monday–Friday, 9 am–5 pm (Closed Bank Holidays)

Email: customersupport@beldray.co.uk

Fax: 0161 628 2126

Please have your delivery note to hand as details from it will be required.

If you wish to return this product please return it to the retailer from where it was purchased with your receipt (subject to their terms and conditions).

Guarantee

This product is guaranteed for a period of 1 year from the date of purchase against mechanical and electrical defects.

This guarantee is only valid if the appliance is used solely for domestic purposes in accordance with the instructions and provided that it is not connected to an unsuitable electricity supply or dismantled or interfered with in any way or damaged through misuse. Under this guarantee we undertake to repair or replace free of charge any parts found to be defective. Reasonable proof of purchase must be provided.

Nothing in this guarantee or in the instructions relating to this product excludes, restricts or otherwise affects your statutory rights.

In line with our policy of continuous development we reserve the right to change this product, packaging and documentation specification without notice.

Consumables are not guaranteed i.e. plug and fuse.

The crossed out wheelie bin symbol on this item indicates that this appliance needs to be disposed of in an environmentally friendly way when it becomes of no further use or has worn out. Contact your local authority for details of where to take the item for recycling.



Distributed by:
UP Global Sourcing,
Victoria Street, Manchester OL9 0DD. UK
+44 (0)333 577 9820
customersupport@beldray.co.uk

©Beldray Trademark. All rights reserved.

Please retain all instructions for future reference.
Made in China.
CD010216/MD000000/V1