

Beldray[®] Est 1872

Nobody Does It Better

2 in 1 Turbo Flex **CORDLESS** Instruction Manual

**22.2 V
LI-ION
BATTERY**



THE **SCIENCE**
BEHIND CLEAN



www.beldray.com

Please read all of the instructions carefully and retain for future reference.

Safety Instructions

When using electrical appliances, basic safety precautions should always be followed.

Check that the voltage indicated on the rating plate corresponds with that of the local network before connecting the appliance to the mains power supply.

Children aged from 8 years and people with reduced physical, sensory or mental capabilities or lack of experience and knowledge can use this appliance, only if they have been given supervision or instruction concerning use of the appliance in a safe way and understand the hazards involved.

Children should be supervised to ensure that they do not play with the appliance.

Unless they are older than 8 and supervised, children should not perform cleaning or user maintenance.

This appliance is not a toy.

This appliance contains no user serviceable parts. If the power supply cord, plug or any part of the appliance is malfunctioning or if it has been dropped or damaged, only a qualified electrician should carry out repairs. Improper repairs may place the user at risk of harm.

Keep the appliance out of the reach of children.

Keep the appliance out of the reach of children when it is switched on or cooling down.

Keep the appliance away from heat or sharp edges that could cause damage.

Keep the appliance away from other heat emitting appliances.

Keep the appliance free from dust, lint, hair or anything that may reduce the airflow of the appliance.

Do not immerse the appliance in water or any other liquid.

Do not operate the appliance with wet hands.

Do not expose the appliance to rain.

Do not remove from the adaptor from the mains power supply by pulling the cord; switch off and remove the plug by hand.

Do not use the adaptor to recharge non-rechargeable batteries.

Do not use the appliance if it has been dropped or if there are visible signs of damage.

Do not use the appliance for anything other than its intended use.

Do not use any parts/accessories or adaptors other than those supplied with this appliance, as this may cause damage.

Do not use any damaged accessories or adaptors.

Do not use this appliance outdoors.

Do not store the appliance in direct sunlight or in high humidity conditions.

Do not use this appliance if any of the openings are blocked.

Do not use the appliance to pick up flammable liquid, matches, cigarette ends, hot ashes or any hot, burning or smoking objects.

Do not use this appliance to pick up hard, sharp objects such as glass or nails etc.

Do not use the appliance to pick up water or any other liquid, as this poses risk of an electric shock.

The hose should be checked regularly and must not be used if damaged.

Take care when equipping accessories with rotating parts as this could cause entrapment.

Switch off the appliance and disconnect it from the mains power supply before changing or fitting accessories.

Always ensure that the appliance has cooled fully after use before performing any cleaning or user maintenance.

Use of an extension cord with the appliance is not recommended.

Only use the appliance with the power supply unit provided.

This appliance should not be operated by means of an external timer or separate remote control system.

This appliance is intended for domestic use only. It should not be used for commercial purposes.

Battery Safety

The supply terminals are not to be short-circuited.

If the battery pack becomes exhausted, it should be removed from the product to avoid leakage.

In the event of the battery pack leaking, do not allow any liquid to come into contact with the skin or eyes.

If contact has been made, wash the affected area with copious amounts of water and seek medical advice.

Keep the battery pack out of the reach of children.

Avoid storing the battery pack in direct sunlight.

Do not dispose of the battery pack in a fire.

Do not crush, puncture, dismantle or otherwise damage the battery pack.

Do not store above 60 °C.

Do not expose the battery pack to heat or fire as it may explode.

Do not subject the battery pack to mechanical shock.

Do not dispose of the exhausted battery pack in household waste.

Once battery pack becomes exhausted, take it to a local recycling station. Contact the local government offices for further details.

This appliance is fitted with a 22.2 V 2150 mAh Li-ion battery pack (non-removable).

Dos and Don'ts

Do:

Check that the HEPA filter is kept clear of obstruction.

Make sure that the dust container and HEPA filter are cleaned regularly to preserve suction and prolong the life of the vacuum cleaner.

Clean the dust container and HEPA filter at least every three weeks with clean water to keep the vacuum cleaner working efficiently.

Don't:

Use the vacuum cleaner without the HEPA filter or dust container in position.

Use the vacuum cleaner to pick up flammable liquids, matches, cigarette ends, hot ashes or any hot, burning or smoking objects.

Use the vacuum cleaner to pick up water or any other liquid, as this poses risk of an electric shock.

Care and Maintenance

Wipe the external surface of the vacuum cleaner with a soft, damp cloth and allow to dry thoroughly.

Do not use any harsh or abrasive detergents or cleaning agents to clean any part of the vacuum cleaner.

Keep the washable filter clean and replace when it becomes worn.

Getting Started

Remove the appliance from the box.

Remove any packaging from the appliance.

Place the packaging inside the box and either store or dispose of safely.

In the Box

2 in 1 Turbo Flex Cordless

Electric floor brush

Crevice tool

Brush tool

Mains power adaptor

Battery charging station

Instruction manual

Features

22.2 V rechargeable lithium-ion battery

Multifunctional – handheld and upright

Multidirectional swivel head

Powerful suction

Ergonomic flexi-hinge

500 ml dust container

25–60 minutes operating time

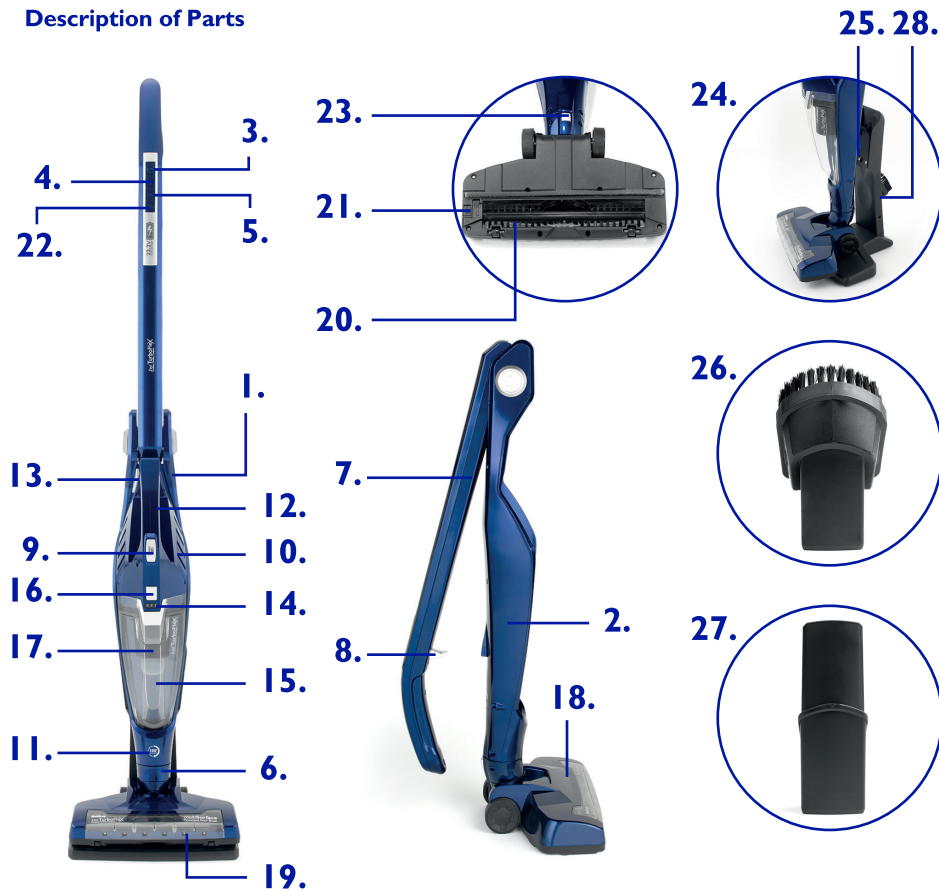
Electric floor brush

Charge time: 4 hours

Electric floor brush

Lightweight: 2.3 kg

Description of Parts



1. 2 in 1 Turbo Flex Cordless main body
2. Main body handheld cradle
3. Upright power button
4. Increase power button (+)
5. Reduce power button (-)
6. Upright vac suction nozzle
7. Foldable handle
8. Foldable handle release trigger
9. Handheld power button
10. Handheld vac unit

11. Handheld vac suction nozzle
12. Handheld vac handle
13. Handheld vac release button
14. Indicator light
15. Dust container
16. Dust container release button
17. HEPA filter
18. Electric floor brush
19. LED lights

20. Brush bar
21. Brush bar locking tab
22. Brush bar button
23. Electric floor brush release button
24. Battery charging station
25. Battery charging socket
26. Brush tool
27. Crevice tool
28. Accessory holder

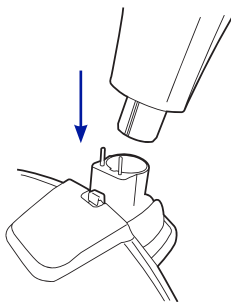
Instructions for Use

Assembling the 2 in 1 Turbo Flex Cordless

STEP 1: Check that the vacuum cleaner is unplugged from the mains power supply.

STEP 2: Fit the handheld vac unit by inserting the suction nozzle end into the main body handheld cradle. Push the handheld vac handle in towards the vacuum cleaner main body until it locks into position.

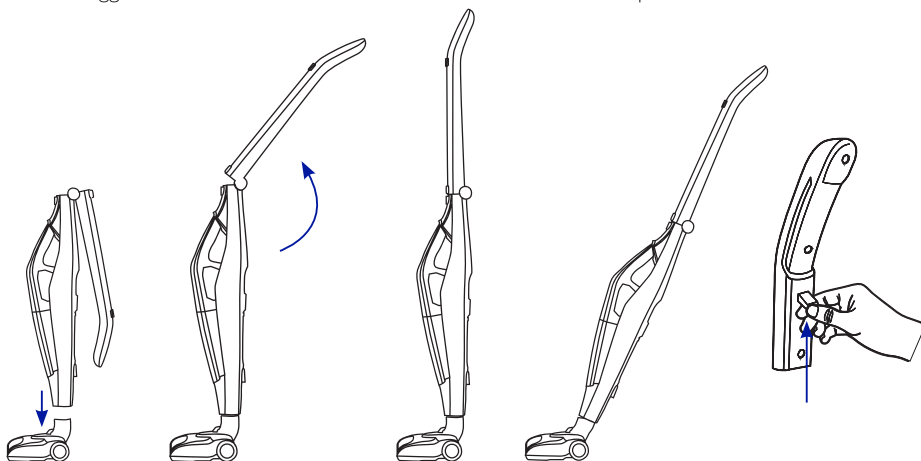
STEP 3: Insert the upright vac suction nozzle at the bottom of vacuum cleaner main body into the electric floor brush, so that the locking tab and pins are aligned and then push together until it locks into position.



STEP 4: Open out the foldable handle by lifting it away from the vacuum cleaner main body, until it locks into the upright position.

STEP 5: To use the flexi-hinge feature, pull back the foldable handle release trigger on the back of the handle and hold it into position, allowing the handle to flex further.

STEP 6: To store the foldable handle in the down position, pull and hold the foldable handle release trigger on the back of the handle and fold it into the down position.



Assembling the Battery Charging Station

STEP 1: Position the battery charging station within reach of a mains power supply.

STEP 2: Insert the accessory holder into the base of the battery charging station.

STEP 3: Store the attachments on the accessory holder and slide the vacuum cleaner onto the battery charging station, making sure that it fully engages with the battery charging socket.

STEP 4: Connect the lead from the mains power adaptor into the back of the battery charging station.

Charging the 2 in 1 Turbo Flex Cordless

Before first use, the vacuum cleaner must be charged for approx. 4 hours. Subsequent charging times will vary dependent upon use. If the vacuum cleaner runs down completely during use, it may take up to 4 hours to fully recharge the battery.

Note: The indicator light will flash rapidly when battery charge is running low.

Using the Battery Charging Station

STEP 1: Slide the vacuum cleaner onto the battery charging station.

STEP 2: Connect the mains power adaptor to the back of the battery charging station, aligning the slot on the reverse of the unit with the socket on the upright section of the charging station.

STEP 3: Plug the mains power adaptor into the mains power supply; the indicator light will flash to confirm that the battery is charging. Once the battery is fully charged, the indicator light will remain illuminated and the battery charging station will automatically stop charging, to preserve the lifespan of the battery.

Note: If the indicator light begins to flash rapidly, there has been a malfunction whilst charging. Remove the vacuum cleaner from the battery charging station and then repeat steps 1–3.

Using the 2 in 1 Turbo Flex Cordless

The operation time of the vacuum cleaner will vary depending upon the speed settings used. The vacuum cleaner will run for approx. 25 minutes when used on a higher speed setting or approx. 60 minutes when used on a normal speed setting.

As an Upright Vac

STEP 1: Unplug the battery charging station from the mains power supply and then remove the vacuum cleaner from the battery charging station.

STEP 2: Install the electric floor brush following the instructions in the section entitled 'Assembling the 2 in 1 Turbo Flex Cordless'.

STEP 3: To turn on the vacuum cleaner, press the 'Power' button. The indicator light will illuminate to signal that the vacuum cleaner has powered on.

STEP 4: The default setting is high speed. If a low speed setting is required press the reduce power '–' button.

STEP 5: To switch the electric floor brush on or off, press the brush bar button. When the electric floor brush is switched on, the LED lights will activate.

STEP 6: Turn off the vacuum cleaner by pressing the 'Power' button once more.

As a Handheld Vac

STEP 1: Unplug the battery charging station from the mains power supply and then remove the vacuum cleaner from the battery charging station.

STEP 2: Press and hold the handheld vac release button and then using the handheld vac handle, carefully pull the handheld vac unit away from the vacuum cleaner main body.

STEP 3: Install the required attachment by inserting it into the handheld vac suction nozzle. The brush tool is great for use on upholstery, whilst the crevice tool is ideal for awkward-to-clean areas.

STEP 4: To turn on the vacuum cleaner, press the 'Power' button.

STEP 5: Turn off the vacuum cleaner by pressing the 'Power' button once more.

Note: Only the high speed setting is available when using as a handheld vac.

Emptying the Dust Container

It is important to empty the dust container regularly. This will help to preserve suction and prolong the life of the vacuum cleaner.

STEP 1: Turn off the vacuum cleaner.

STEP 2: Press and hold the handheld vac release button on the side of the handheld unit handle and carefully pull the handheld vac unit away from the vacuum cleaner main body.

STEP 3: If the vacuum cleaner has been used as a handheld unit, remove the attachment by carefully pulling it out of the handheld vac suction nozzle.

STEP 4: Hold the handheld vac unit with the dust container facing downwards. Press the dust container release button and carefully remove the dust container from the handheld vac unit.

STEP 5: Carefully remove the filter unit from the dust container.

STEP 6: Twist the plastic filter cover in a clockwise direction to remove it and expose the HEPA filter. If there is any dust or other residue remaining on the HEPA filter surface, clean it following the instructions in the section entitled 'Cleaning the HEPA Filter'.

STEP 7: Empty the dust container over a bin slowly and carefully to reduce the amount of dust released back into the atmosphere.

STEP 8: Reattach the plastic filter cover over the HEPA filter by twisting it in an anticlockwise direction until it locks into place. Reinsert the filter unit into the dust container and then refit the dust container to the handheld unit, aligning the locking tab and button with the corresponding slots.

Cleaning the HEPA Filter

It is important to keep the HEPA filter free from dust and dirt, to allow air to flow freely around the vacuum cleaner. This will help to preserve suction and prolong the life of vacuum cleaner.

STEP 1: Remove the HEPA filter following the instructions in the section entitled 'Emptying the Dust Container'.

STEP 2: To clean the HEPA filter, hold it over a waste bin, preferably outdoors and gently shake off any dust and dirt. Once the majority of the dust and dirt has been removed, rinse away any residue by running the HEPA filter under cold water. Allow it to dry thoroughly.

STEP 3: Once the HEPA filter has fully dried, refit it, along with the dust container following the instructions in the section entitled 'Emptying the Dust Container'.

Note: It is recommended that the HEPA filter be cleaned at least once a month with clean water to keep the vacuum cleaner performing at its best. Do not clean the HEPA filter using detergent. Never use external heat sources, such as a radiator to dry the HEPA filter.

Cleaning the Electric Floor Brush

It is important to clean the electric floor brush on a regular basis to maintain optimum cleaning performance.

The electric floor brush can be removed from the vacuum cleaner main body for easy cleaning. Always replace the electric floor brush correctly.

STEP 1: Press the electric floor brush release button and remove the electric floor brush from the vacuum cleaner main body.

STEP 2: Lift the locking tab from the base of the electric floor brush by sliding the locking switch to the unlocked position.

STEP 3: Lift the brush bar out of the electric floor brush.

STEP 4: Using a thin tool, remove any built-up debris from the brush bar, inside the electric floor brush and the air inlet on the top of the floor brush.

STEP 5: After cleaning, replace the brush bar, correctly aligning the ends with the corresponding slots in the electric floor brush. Close the locking tab and secure by sliding the locking switch to the locked position.

STEP 6: Reattach the electric floor brush to the vacuum cleaner main body following the instructions in the section entitled 'Assembling the 2 in 1 Turbo Flex Cordless'.

Note: Do not immerse the electric floor brush in water or any other liquid.

Storage

The vacuum cleaner can be stored with ease by using the foldable handle; simply pull and hold the foldable handle release trigger and carefully push the foldable handle down towards the back of the vacuum cleaner main body.

Check that the vacuum cleaner is cool, clean and dry before storing in a cool, dry place.

Troubleshooting

Symptom	Possible Cause	Solution
The vacuum cleaner will not charge.	The mains power adaptor lead is not securely connected.	Plug the mains power adaptor into the mains power supply, checking that it is switched on and then follow the instructions in the section entitled 'Charging the 2 in 1 Turbo Flex Cordless'.
The suction is poor.	The suction nozzle is blocked. The dust container is almost full. The HEPA filter is blocked. The electric floor brush and brush bar have a build-up of debris.	Disconnect the attachment from the suction nozzle and remove the blockage. Empty the dust container following the instructions in the section entitled 'Emptying the Dust Container'. Clean the HEPA filter following the instructions in the section entitled 'Cleaning the HEPA Filter'. Clean the electric floor brush and brush bar following the instructions in the section entitled 'Cleaning the Electric Floor Brush'.
The indicator light is flashing rapidly.	There has been a malfunction whilst charging.	Remove the vacuum cleaner from the battery charging station and then repeat steps 1–3 from the section entitled 'Using the Battery Charging Station'.

Specifications

Product code: BEL0738

Battery: 22.2 V 2150 mAh Li-ion (included)

27 V DC charging cable (included)

Dust tank capacity: 500 ml

Notes

Notes

UP Global Sourcing UK Ltd.,

Victoria Street, Manchester OL9 0DD. UK.

If this product does not reach you in an acceptable condition please contact our Customer Services Department by one of the following methods:

Telephone: +44 (0)333 577 9820*

*Telephone lines are open Monday–Friday, 9 am–5 pm (Closed Bank Holidays)

Email: customersupport@beldray.com

Fax: 0161 628 2126

Please have your delivery note to hand as details from it will be required.

If you wish to return this product please return it to the retailer from where it was purchased with your receipt (subject to their terms and conditions).

Guarantee

All products purchased as new carry a manufacturer's guarantee; the time period of the guarantee will vary dependent upon the product. Where reasonable proof of purchase can be provided, Beldray will provide a standard 12 month guarantee with the retailer from the date of purchase. This is only applicable when products have been used as instructed for their intended, domestic use. Any misuse or dismantling of products will invalidate any guarantee.

Under the guarantee, we undertake to repair or replace free of any charge any parts found to be defective. In the event that we cannot provide an exact replacement, a similar product will be offered or the cost refunded. Any damages from daily wear and tear are not covered by this guarantee, nor are consumables such as plugs, fuses etc.

Please note that the above terms and conditions may be updated from time to time and we therefore recommend that you check these each time you revisit the website.

Nothing in this guarantee or in the instructions relating to this product excludes, restricts or otherwise affects your statutory rights.

The crossed out wheelie bin symbol on this item indicates that this appliance needs to be disposed of in an environmentally friendly way when it becomes of no further use or has worn out. Contact your local authority for details of where to take the item for recycling.



3
YEAR
GUARANTEE

* To be eligible for the extended guarantee, go to <http://guarantee.upgs.com/beldray> and register your product and register your product within 30 days of purchase.

Rechargeable batteries are not included in the extended manufacturer's guarantee (after the first 12 months).



Find us on 

www.facebook.com/Beldray



Manufactured by:
UP Global Sourcing UK Ltd.,
Victoria Street, Manchester OL9 0DD. UK
+44 (0)333 577 9820
customersupport@beldray.com

©Beldray Trademark. All rights reserved.

Please retain all instructions for future reference.
Made in China.

CD250917/MD110618/V5

