

# Beldray<sup>®</sup>

Est 1872

Nobody Does It Better

## Compact Vac Lite

### Instruction Manual



THE **SCIENCE**  
BEHIND CLEAN



[www.beldray.com](http://www.beldray.com)

Please read all of the instructions carefully and retain for future reference.

## **Safety Instructions**

When using electrical appliances, basic safety precautions should always be followed.

Check that the voltage indicated on the rating plate corresponds with that of the local network before connecting the appliance to the mains power supply. Children aged from 8 years and people with reduced physical, sensory or mental capabilities or lack of experience and knowledge can use this appliance, only if they have been given supervision or instruction concerning use of the appliance in a safe way and understand the hazards involved. Children should be supervised to ensure that they do not play with the appliance.

Unless they are older than 8 and supervised, children should not perform cleaning or user maintenance.

This appliance is not a toy.

This appliance contains no user serviceable parts. If the power supply cord, plug or any part of the appliance is malfunctioning or if it has been dropped or damaged, only a qualified electrician should carry out repairs. Improper repairs may place the user at risk of harm.

Keep the appliance out of the reach of children.

Keep the appliance and its supply cord away from heat or sharp edges that could cause damage.

Keep the appliance free of dust, lint, hair or anything that may reduce the airflow of the appliance.

Do not use the appliance with wet hands.

Do not use this appliance if any of the openings are blocked.

Do not use the appliance to pick up flammable liquid, matches, cigarette ends, hot ashes or any hot, burning or smoking objects.

Do not use this appliance to pick up hard, sharp objects such as glass or nails etc.

Do not fit any parts/accessories other than the parts supplied with this appliance, as this may cause damage.

Do not use the appliance to pick up water or any other liquid, as this

poses risk of an electric shock.

Do not immerse the appliance in water or any other liquid.

Do not use the appliance for anything other than its intended use.

Do not use this appliance outdoors.

Do not leave the appliance unattended whilst connected to the mains power supply.

Do not remove from the mains power supply by pulling the cord; switch off and remove the plug by hand.

Do not store the appliance in direct sunlight or in high humidity conditions.

Always unplug the appliance after use and before any cleaning or maintenance.

Use of an extension cord with the appliance is not recommended.

This appliance should not be operated by means of an external timer or separate remote control system.

This appliance is intended for domestic use only. It should not be used for commercial purposes.

### **Thermal Cut-out Device**

If the dust container and filters are not cleaned on a regular basis, the vacuum cleaner may overheat, which will cause the thermal cut-out device to activate due to restricted flow of air around the unit.

If the vacuum cleaner cuts out, press the power button to turn it off and unplug it from the mains power supply. Proceed to empty the dust container, clean all of the filters and allow the vacuum cleaner to cool for approx. 1 hour.

### **Dos and Don'ts**

#### **Do:**

Make sure that the dust container, HEPA filter and exhaust filter are cleaned regularly to preserve suction and prolong the life of the vacuum cleaner.

#### **Don't:**

Use the vacuum cleaner without the dust container or filters in position.

Use the vacuum cleaner to pick up flammable liquid, matches, cigarette ends, hot ashes or any hot, burning or smoking objects.

Use the vacuum cleaner to pick up water or any other liquid, as this poses risk of an electric shock.

Use excessive force when using the floor brush.

## Care and Maintenance

Wipe the external surface of the vacuum cleaner with a soft, damp cloth and allow to dry thoroughly.

Do not use any harsh or abrasive detergents or cleaning agents to clean any part of the vacuum cleaner.

Make sure that the HEPA filter and exhaust filter are kept clean and are cleaned after every removal of the dust container.

To clean the inside of the dust container, it is possible to remove the HEPA filter.

## Getting Started

Remove the appliance from the box.

Remove any packaging from the appliance.

Place the packaging inside the box and either store or dispose of safely.

## In the Box

Compact Vac Lite

Suction hose

Telescopic extension tube

Floor brush

Brush/crevice tool

Instruction manual

## Features

700 W power

Cyclonic vacuum technology

HEPA filter

1.8 L dust container

4.5 m power cord

Includes brush/crevice tool

## Description of Parts



1. Compact Vac Lite main unit
2. Handle
3. Telescopic extension tube
4. Telescopic extension tube button
5. Suction hose
6. Suction hose lock
7. Suction hose neck
8. Air valve
9. Power button
10. Cord rewind button
11. Air inlet
12. Dust container

13. Dust container release button
14. Dust container base release catch
15. Dust container lid release switch
16. Exhaust filter
17. Exhaust filter housing
18. HEPA filter
19. HEPA filter housing
20. Floor brush
21. Brush/crevice tool
22. Storage clip
23. Push-fit clip

## Instructions for Use

### Before First Use

Before using the vacuum cleaner for the first time, clean it with a soft, damp cloth and dry thoroughly. Do not immerse the vacuum cleaner in water or any other liquid.

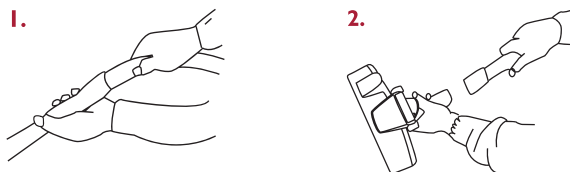
### Assembling the Compact Vac Lite

Switch off and unplug the vacuum cleaner from the mains power supply before fitting any accessories onto the air inlet.

**STEP 1:** Fit the dust container by pushing it onto the vacuum cleaner main unit, aligning the latch with the location hole on the unit.

**STEP 2:** To fit the suction hose, insert the suction hose lock into the air inlet and twist it 90 ° in a clockwise direction, until it locks into position.

### Using the Telescopic Extension Tube



The floor brush and brush/crevice tool both fit onto the telescopic extension tube to help to reach into confined spaces, such as behind radiators or underneath car seats.

**STEP 1:** Fit the telescopic extension tube by pushing the large opening of the telescopic extension tube over the end of the suction hose neck (1).

**STEP 2:** Push the chosen attachment onto the end of the telescopic extension tube (2).

**STEP 3:** Adjust the telescopic extension tube to the required length by pressing the telescopic extension tube button down and sliding the inner tube in or out.

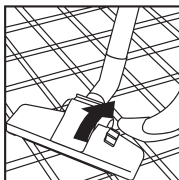
**STEP 4:** Release the telescopic extension tube button to lock the telescopic extension tube into position at the selected length.

**Note:** Open the air valve on the suction hose when using the vacuum cleaner to clean thick pile carpets.

### Using the Floor Brush

**STEP 1:** Push the floor brush onto the end of the telescopic extension tube or the suction hose neck if the telescopic extension tube is not being used.

**STEP 2:** Select which position on the floor brush is required for the floor type by pressing the switch forwards or backwards. Switching it forwards lifts the brushes for use on carpet and





switching it backwards lowers the brushes for cleaning hard floors.

**STEP 3:** Carefully pull out the power supply cord until it is at a suitable length; do not exceed the red mark. Plug it into the mains power supply.

**STEP 4:** Turn on the vacuum cleaner by pressing the power button.

### Using the Brush/Crevise Tool

The crevice tool is ideal for removing dust and dirt from folds in fabrics, radiators, corners, recesses and other places that are hard to reach. The brush tool is perfect for cleaning shelves, cupboards and windowsills.

**STEP 1:** Push the brush/crevice tool onto the end of the telescopic extension tube or the suction hose neck if the telescopic extension tube is not being used.

**STEP 2:** Select which attachment is to be used by rotating the head to either the crevice or brush setting.

**STEP 3:** Turn on the vacuum cleaner by pressing the power button.

### After Use

**STEP 1:** Turn off the vacuum cleaner by pressing the power button.

**STEP 2:** Switch off and unplug the vacuum cleaner from the mains power supply.

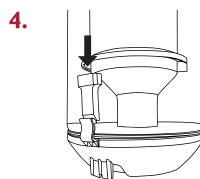
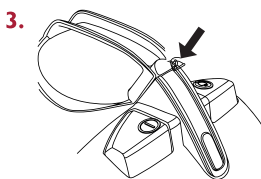
**STEP 3:** Press and hold the cable rewind button until the power supply cord has completely wound back into the cable drum.

**Warning:** Hold onto the plug to guide the power supply cord back into the vacuum cleaner. Failure to do so may cause injury to the user or damage to the vacuum cleaner.

### Emptying the Dust Container

Before emptying the dust container, switch off and unplug the vacuum cleaner from the mains power supply. It is recommended to empty the dust container outdoors.

**STEP 1:** Whilst securely holding the vacuum cleaner main unit, remove the dust container by pressing the dust container release button and pulling the dust container away from the vacuum cleaner main unit (3).



**STEP 2:** Holding the dust container over a bin or refuse bag, slide the dust container base release catch to open the dust container (4). Empty the dust container slowly and carefully to reduce the amount of dust released back into the atmosphere. Shake the dust container gently to dislodge any stubborn dust.

**STEP 3:** To close the dust container, push the base closed until the dust container base release catch locks back into position.

**STEP 4:** Replace the dust container by pushing it onto the vacuum cleaner main unit, aligning the dust container base release catch and dust container lid release switch with the location holes on the main unit. Press and hold the dust container release button to allow it to fully align.

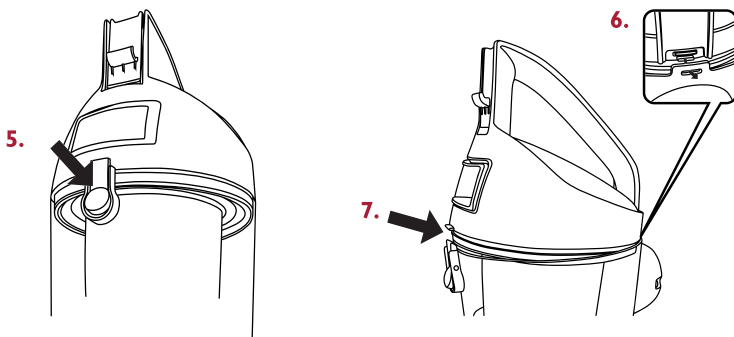
**Warning:** Do not use the vacuum cleaner if the dust container is filled past the max. fill mark, as this could damage the unit or cause injury to the user.

### Cleaning the Dust Container and HEPA Filter

The HEPA filter can only be accessed when the dust container has been removed.

**STEP 1:** Empty the dust container following the instructions in the section entitled 'Emptying the Dust Container'.

**STEP 2:** Once the dust container has been emptied, press the dust container lid release switch (5) and pull the dust container away using the handle.



**STEP 3:** Remove the filter housing by twisting it in an anticlockwise direction, to reveal the HEPA filter. Twist the HEPA filter in an anticlockwise direction and pull it away from the dust container handle.

**STEP 4:** Shake off the HEPA filter and filter housing until the majority of the dust has been removed, then wash the HEPA filter, filter housing and dust container in warm water and allow to dry thoroughly.

**STEP 5:** Once all of the parts have dried fully, fix the HEPA filter back into place on the dust container lid and secure by twisting it in a clockwise direction. Replace the filter housing back onto the dust container lid and twist it in a clockwise direction.

**STEP 6:** Reassemble the dust container lid by aligning the tab on the lid with the location hole on the dust container (6). Once this is aligned, the dust container lid release switch can clip around the second tab on the dust container lid to secure it into position (7).

**STEP 7:** Replace the dust container by pushing it onto the vacuum cleaner main unit, aligning the dust container base release catch and dust container lid release switch with the location holes on the main unit. Press and hold the dust container release button to allow it to fully align.

**Note:** If the dust container and HEPA filter are not cleaned regularly, the thermal cut-out device will activate. For further details, see the section entitled 'Thermal Cut-out Device'.

**Warning:** Do not clean the HEPA filter using detergent. Always allow the HEPA filter to air dry; never use external heat sources such as a radiator to dry them.



### Cleaning the Exhaust Filter

**STEP 1:** To remove the exhaust filter for cleaning, press down the clip on the top of the exhaust filter housing and lift the cover away.

**STEP 2:** Remove the exhaust filter from the exhaust filter housing.

**STEP 3:** Shake off the exhaust filter until the majority of the dust has been removed, then wash it under clean, warm water and allow to dry thoroughly.

**STEP 4:** Wash the exhaust filter housing under clean, warm water and allow it to dry thoroughly.

**STEP 5:** Once the exhaust filter has dried fully, slot it back into the exhaust filter housing and replace the exhaust filter housing cover.

**Warning:** Do not clean the exhaust filter using detergent. Always allow the exhaust filter to air dry; never use external heat sources, such as a radiator to dry them.

### Troubleshooting

Symptom	Possible Cause	Solution
The suction is poor.	The telescopic extension tube, floor brush, brush/crevice tool or air inlet is blocked.	Disconnect the attachment and remove the blockage.
	The dust container is almost full.	Empty the dust container following the instructions in the section entitled 'Emptying the Dust Container'.
	The HEPA filter is blocked.	Clean the HEPA filter following the instructions in the section entitled 'Cleaning the Dust Container and HEPA Filter'.
The vacuum cleaner has cut-out or stopped working.	The thermal cut-out device has activated due to restricted air flow, and has cut power to the motor to protect the vacuum cleaner.	Turn off and disconnect the vacuum cleaner from the mains power supply. Empty the dust container and clean the HEPA filter and exhaust filter. Allow the vacuum cleaner to cool for 1 hour.

### Storage

The floor brush can be positioned into the storage clip for easy storage.

Check that the vacuum cleaner is cool, clean and dry before storing in a clean, dry place.

### Specifications

Product code: BEL0730

Rated Voltage: 220–240 V ~ 50/60 Hz

Rated Wattage: 700 W

## Connection to the mains

Please check that the voltage indicated on the product corresponds with your supply voltage.

### Important

As the colours in the mains lead of this appliance may not correspond with the coloured markings identifying the terminals in your plug, please proceed as follows:

The wires in the mains lead are coloured in accordance with the following code:

Blue Neutral (N)

Brown Live (L)

FOR UK USE ONLY - Plug fitting details  
(where applicable).

The wire coloured BLUE is the NEUTRAL and must be connected to the terminal marked N or coloured BLACK.

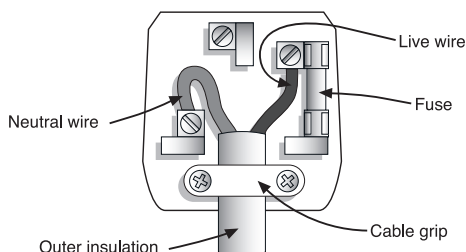
The wire coloured BROWN is the LIVE wire and must be connected to the terminal marked L or coloured RED.

On no account must either the BROWN or the BLUE wire be connected to the EARTH terminal ( $\equiv$ ).

Always ensure that the cord grip is fastened correctly.

The plug must be fitted with a fuse of the same rating already fitted and conforming to BS 1362 and be ASTA approved.

If in doubt consult a qualified electrician who will be pleased to do this for you.



### Non-rewireable mains plug

If your appliance is supplied with a non-rewireable plug fitted to the mains lead and should the fuse need replacing, you must use an ASTA approved one (conforming to BS 1362 of the same rating).

If in doubt, consult a qualified electrician who will be pleased to do this for you.

If you need to remove the plug - DISCONNECT IT FROM THE MAINS and then cut it off the mains lead and immediately dispose of it safely. Never attempt to reuse the plug or insert it into a socket outlet as there is a danger of an electric shock.

### **UP Global Sourcing UK Ltd.,**

Victoria Street, Manchester OL9 0DD. UK.

If this product does not reach you in an acceptable condition please contact our Customer Services Department by one of the following methods:

Telephone: +44 (0)333 577 9820\*

\*Telephone lines are open Monday–Friday, 9 am–5 pm (Closed Bank Holidays)

Email: [customersupport@beldray.com](mailto:customersupport@beldray.com)

Fax: 0161 628 2126

Please have your delivery note to hand as details from it will be required.

If you wish to return this product please return it to the retailer from where it was purchased with your receipt (subject to their terms and conditions).

### **Guarantee**

All products purchased as new carry a manufacturer's guarantee; the time period of the guarantee will vary dependent upon the product. Where reasonable proof of purchase can be provided, Beldray will provide a standard 12 month guarantee with the retailer from the date of purchase. This is only applicable when products have been used as instructed for their intended, domestic use. Any misuse or dismantling of products will invalidate any guarantee.

Under the guarantee, we undertake to repair or replace free of any charge any parts found to be defective. In the event that we cannot provide an exact replacement, a similar product will be offered or the cost refunded. Any damages from daily wear and tear are not covered by this guarantee, nor are consumables such as plugs, fuses etc.

Please note that the above terms and conditions may be updated from time to time and we therefore recommend that you check these each time you revisit the website.

Nothing in this guarantee or in the instructions relating to this product excludes, restricts or otherwise affects your statutory rights.

The crossed out wheelie bin symbol on this item indicates that this appliance needs to be disposed of in an environmentally friendly way when it becomes of no further use or has worn out. Contact your local authority for details of where to take the item for recycling.



# Congratulations on your purchase!

Go to <http://guarantee.upgs.com/beldray>  
to register your product for a 12 month guarantee.

The Beldray brand stands for reliability, trust and consumer loyalty.  
Our fantastic range of products includes everything that you need to  
keep your home clean and tidy.

View our full range of household essentials at **[www.beldray.com](http://www.beldray.com)**



Manufactured by:  
UP Global Sourcing UK Ltd.,  
Victoria Street, Manchester OL9 0DD. UK  
+44 (0)333 577 9820  
[customersupport@beldray.com](mailto:customersupport@beldray.com)

©Beldray Trademark. All rights reserved.

Please retain all instructions for future reference.  
Made in China.



CD170817/MD050917/V2