

# Beldray<sup>®</sup>

est 1872

Our practical,  
compact &  
lightweight  
vacuum  
cleaner



## MULTI CYCLONIC VAC INSTRUCTION MANUAL



[www.beldray.com](http://www.beldray.com)

Please read all of the instructions carefully and retain for future reference.

## **Safety Instructions**

When using electrical appliances, basic safety precautions should always be followed.

Check that the voltage indicated on the rating plate corresponds with that of the local network before connecting the appliance to the mains power supply.

Children aged from 8 years and people with reduced physical, sensory or mental capabilities or lack of experience and knowledge can use this appliance, only if they have been given supervision or instruction concerning use of the appliance in a safe way and understand the hazards involved.

Children should be supervised to ensure that they do not play with the appliance.

Unless they are older than 8 and supervised, children should not perform cleaning or user maintenance.

This appliance contains no user serviceable parts. If the power supply cord, plug or any part of the appliance is malfunctioning or if it has been dropped or damaged, do not use. Only a qualified electrician should carry out repairs. Improper repairs may place the user at risk of harm.

Do not remove from the mains power supply by pulling the cord; switch off and remove the plug by hand.

Do not pull or carry the appliance by its power supply cord.

Do not use the appliance for anything other than its intended use.

Do not use this appliance if any of the openings are blocked.

Take care when equipping accessories with rotating parts as this could cause entrapment.

Switch off the appliance, disconnect it from the mains power supply and allow to cool fully before changing or fitting accessories and before cleaning or user maintenance.

Use of an extension cord with the appliance is not recommended.

This appliance should not be operated by means of an external

timer or separate remote control system.

This appliance is intended for domestic use only. It should not be used for commercial purposes.

### **Thermal Cut-out Device**

If the dust container and filters are not cleaned on a regular basis, the vacuum cleaner may overheat, which will cause the thermal cut-out device to activate due to restricted flow of air around the unit.

If the vacuum cleaner cuts out, press the power button to turn it off and unplug it from the mains power supply. Proceed to empty the dust container, clean all of the filters and allow the vacuum cleaner to cool for approx. 1 hour.

### **Care and Maintenance**

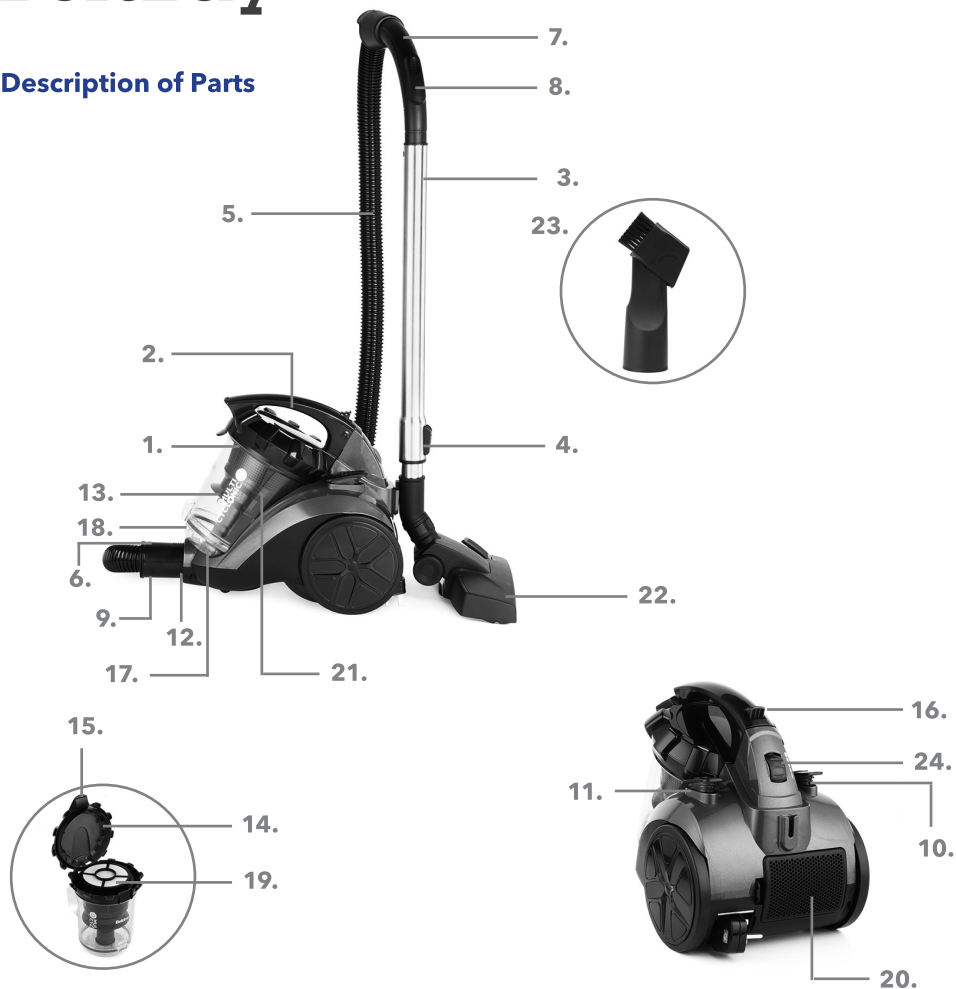
Wipe the external surface of the vacuum cleaner with a soft, damp cloth and allow to dry thoroughly.

Do not use any harsh or abrasive detergents or cleaning agents to clean any part of the vacuum cleaner.

The filters must be kept clean and should be cleaned after every removal of the dust container.

It is possible to remove the cyclonic cone to clean the inside of the dust container.

## Description of Parts



1. Multicyclonic Vacuum Cleaner main unit
2. Handle
3. Telescopic extension tube
4. Telescopic extension tube button
5. Suction hose
6. Suction hose lock
7. Suction hose neck
8. Air valve
9. Locking tabs
10. Power button
11. Cord rewind button
12. Air inlet

13. Dust container
14. Dust container lid
15. Dust container lid release catch
16. Dust container release button
17. Dust container base
18. Dust container base release switch
19. Washable filter
20. Exhaust filter cover
21. Multicyclonic cone
22. Floor brush
23. 2 in 1 crevice and brush tool
24. Variable speed dial

## Instructions for Use

### Before First Use

Before using the vacuum cleaner for the first time, clean the exterior with a soft, damp cloth and dry thoroughly.

Do not immerse the vacuum cleaner in water or any other liquid.

### Assembling the Multicyclonic Vacuum Cleaner

Switch off and unplug the vacuum cleaner from the mains power supply before fitting any accessories onto the air inlet.

**STEP 1:** Fit the dust container by pushing it onto the base of the vacuum cleaner main unit, aligning the indent on the base of the dust container with the knob on the unit.

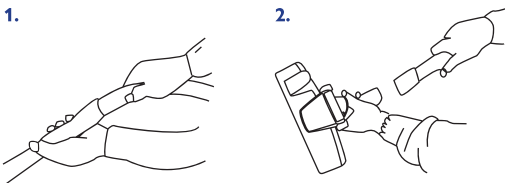
**STEP 2:** To fit the suction hose to the air inlet, insert the suction hose lock into the air inlet.

To remove the suction hose, simultaneously push both locking tabs and pull firmly away from the air inlet.

### Using the Telescopic Extension Tube

The floor brush and attachments fit onto the telescopic extension tube to help to reach into confined spaces, such as behind radiators or underneath car seats.

**STEP 1:** Fit the telescopic extension tube by pushing the large opening of the telescopic extension tube over the end of the suction hose neck (1).



**STEP 2:** Push the chosen attachment onto the end of the telescopic extension tube (2).

**STEP 3:** Adjust the telescopic extension tube to the required length by pressing the telescopic extension tube button down and sliding the inner tube in or out.

**STEP 4:** Release the telescopic extension tube button to lock the telescopic extension tube into position at the selected length.

### Using the Floor Brush

**STEP 1:** Push the floor brush onto the end of the telescopic extension tube or the suction hose neck if the telescopic extension tube is not being used.

**STEP 2:** Select which position on the floor brush is required for the floor type by pressing the switch forwards or backwards. Switching it forwards lifts the brushes, ideal for use on carpets. Switching it backwards lowers the brushes for cleaning hard floors.

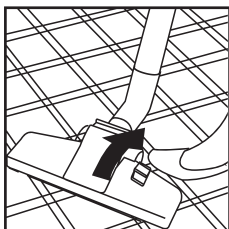
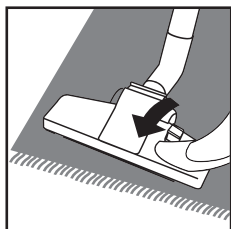
**STEP 3:** Carefully pull out the power supply cord until it is at a suitable length; do not exceed the red mark. Plug it into the mains power supply.

**STEP 4:** Turn on the vacuum cleaner by pressing the power button.

**STEP 5:** Rotate the variable speed dial to alter the suction speed; rotating it in an upwards direction increases the amount of suction, whereas rotating it a downwards direction decreases the amount of suction.

**Note:** Open the air valve on the suction hose neck when vacuuming carpets.

A lower speed setting is ideal for cleaning delicate materials such as curtains. The medium speed setting is perfect for upholstered furniture, carpets, mattresses. High speed settings should only be used for hard floors.



## Using the 2 in 1 Brush and Crevice Tool

The crevice tool is ideal for removing dust and dirt from folds in fabrics, radiators, corners, recesses and other places that are hard to reach.

The brush tool is perfect for cleaning shelves, cupboards and windowsills.

**STEP 1:** Push the 2 in 1 brush and crevice tool onto the end of the telescopic extension tube or the suction hose neck if the telescopic extension tube is not being used.

**STEP 2:** Select which attachment is to be used by rotating the head to either the crevice or brush setting.

**STEP 3:** Turn on the vacuum cleaner by pressing the power button.

**STEP 4:** Rotate the variable speed dial to alter the suction speed; rotating it in a clockwise direction increases the amount of suction, whereas rotating it in an anticlockwise direction decreases the amount of suction.

**Note:** Do not use the suction hose neck without an accessory attached.

## After Use

**STEP 1:** Turn off the vacuum cleaner by pressing the power button.

**STEP 2:** Switch off and unplug the vacuum cleaner from the mains power supply.

**STEP 3:** Press and hold the cable rewind button until the power supply cord has completely wound back into the cable drum.

**STEP 4:** The vacuum cleaner can be stored compactly by clipping the telescopic extension tube to the back of the vacuum cleaner. This will keep the floor brush.

**Warning:** Hold onto the plug to guide the power supply cord

back into the vacuum cleaner. Failure to do so may cause damage to the vacuum cleaner or injury.

## Emptying the Dust Container

Before emptying the dust container, switch off and unplug the vacuum cleaner from the mains power supply. It is recommended to empty the dust container outdoors.

**STEP 1:** Whilst securely holding the vacuum cleaner main unit, remove the dust container by pushing the dust container release button and pulling the dust container away from the vacuum cleaner main unit.

**STEP 2:** Holding the dust container over a bin or refuse bag, press the dust container base release switch to open the dust container base. Empty the dust container slowly and carefully to reduce the amount of dirt released back into the atmosphere. Shake the dust container gently to dislodge any stubborn debris.

**STEP 3:** To close the dust container, push the dust container base closed until the dust container release switch clicks into place.

**STEP 4:** Replace the dust container by pushing it onto the vacuum cleaner main unit, aligning the bottom of the dust container with the tab on the vacuum cleaner main unit.

**Warning:** Do not use the vacuum cleaner if the dust container is filled past the max. fill mark, as this could damage the vacuum cleaner or cause injury to the user.

## Cleaning the Dust Container and Washable Filter

The washable filter can only be accessed when the dust container has been removed.

**STEP 1:** Empty the dust container following the instructions in the section entitled 'Emptying the Dust Container'.

**STEP 2:** Once the dust container is empty, shut the dust container and rotate the dust container lid in an anticlockwise direction. Lift up the dust container lid to remove the cyclonic cone.

**STEP 3:** Open the cyclonic cone using the dust container lid release catch and remove the filters from the cyclonic cone.

**STEP 4:** Hold the filters over a waste bin, preferably outdoors and gently shake off any dust and debris. Once the majority of the dust and dirt has been removed, clean off any residue by rinsing the filters under cold water. Allow to dry thoroughly.

**STEP 5:** Wash the dust container and cyclonic cone in clean, warm water and allow to dry thoroughly.

**STEP 6:** Once all of the parts have dried fully, refit the filter back into place and close the dust container lid. Refit the cyclonic cone into the dust container.

**Note:** If the dust container, multicyclonic cone and filters are not cleaned regularly, the thermal cut-out device will activate. For further details, see the section entitled 'Thermal Cut-out Device'.  
**Warning:** Do not clean the filters using detergent. Always allow the filters to air dry; never use external heat sources, such as a radiator to dry it. Do not wring or twist the filters as this will cause damage; gently squeeze them.

## Cleaning the Exhaust Filter

**STEP 1:** To remove the exhaust filter for cleaning, unlock the clip at the side of the exhaust filter housing.

**STEP 2:** Remove the exhaust filter and exhaust filter housing from the vacuum cleaner main unit.

**STEP 3:** Shake off the exhaust filter until the majority of the dust has been removed, then wash under clean, warm water and allow to dry thoroughly.

**STEP 4:** Once the exhaust filter has dried fully, slot it back into the exhaust filter housing and back into the vacuum cleaner main unit.

## Storage

The vacuum cleaner should be cool, clean and dry before storing in a cool, dry place.

## Troubleshooting

| Symptom              | Possible Cause   | Solution  |
|----------------------|--|---|
| The suction is poor. | The telescopic extension tube, floor brush, 2 in 1 brush and crevice tool or air inlet is blocked. | Disconnect the attachment and clear the blockage.   |
|                      | The dust container is almost full.   | Empty the dust container following the instructions in the section entitled 'Emptying the Dust Container'.  |
|                      | The filters are blocked.   | Clean the filters following the instructions in the section entitled 'Cleaning the Dust Container and Washable Filter' and 'Cleaning the Exhaust Filter'. |



|   |   |   |
|---|---|---|
| <p>The vacuum cleaner has cut-out or stopped working.</p> | <p>The thermal cut-out device has activated due to restricted air flow, and has cut power to the motor to protect the vacuum cleaner.</p> | <p>Turn off and disconnect the vacuum cleaner from the mains power supply. Empty the dust container and clean the filters. Allow the vacuum cleaner to cool for 1 hour.</p> |
|---|---|---|

## Specifications

Product code: BEL0371V2

Rated Voltage: 220-240 V ~ 50/60 Hz

Rated Wattage: 700 W

## Connection to the mains

Please check that the voltage indicated on the product corresponds with your supply voltage.

### Important

As the colours in the mains lead of this appliance may not correspond with the coloured markings identifying the terminals in your plug, please proceed as follows:

The wires in the mains lead are coloured in accordance with the following code:

Blue Neutral (N)

Brown Live (L)

FOR UK USE ONLY - Plug fitting details  
(where applicable).

The wire coloured BLUE is the NEUTRAL and must be connected to the terminal marked N or coloured BLACK.

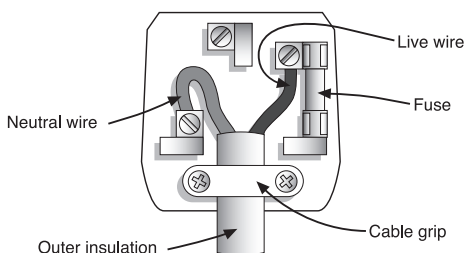
The wire coloured BROWN is the LIVE wire and must be connected to the terminal marked L or coloured RED.

On no account must either the BROWN or the BLUE wire be connected to the EARTH terminal ( $\perp$ ).

Always ensure that the cord grip is fastened correctly.

The plug must be fitted with a fuse of the same rating already fitted and conforming to BS 1362 and be ASTA approved.

If in doubt consult a qualified electrician who will be pleased to do this for you.



### Non-rewireable mains plug

If your appliance is supplied with a non-rewireable plug fitted to the mains lead and should the fuse need replacing, you must use an ASTA approved one (conforming to BS 1362 of the same rating).

If in doubt, consult a qualified electrician who will be pleased to do this for you.

If you need to remove the plug - DISCONNECT IT FROM THE MAINS and then cut it off the mains lead and immediately dispose of it safely. Never attempt to reuse the plug or insert it into a socket outlet as there is a danger of an electric shock.

**UP Global Sourcing UK Ltd.,  
UK. Manchester OL9 0DD.  
Germany. 51149 Köln.**

If this product does not reach you in an acceptable condition please contact our Customer Services Department at **[www.beldray.com](http://www.beldray.com)**

Please have your delivery note to hand as details from it will be required.

If you wish to return this product please return it to the retailer from where it was purchased with your receipt (subject to their terms and conditions).

## **Guarantee**

All products purchased as new carry a manufacturer's guarantee; the time period of the guarantee will vary dependent upon the product. Where reasonable proof of purchase can be provided, Beldray will provide a standard 12 month guarantee with the retailer from the date of purchase. This is only applicable when products have been used as instructed for their intended, domestic use. Any misuse or dismantling of products will invalidate any guarantee.

Under the guarantee, we undertake to repair or replace free of any charge any parts found to be defective. In the event that we cannot provide an exact replacement, a similar product will be offered or the cost refunded. Any damages from daily wear and tear are not covered by this guarantee, nor are consumables such as plugs, fuses etc.

Please note that the above terms and conditions may be updated from time to time and we therefore recommend that you check these each time you revisit the website.

Nothing in this guarantee or in the instructions relating to this product excludes, restricts or otherwise affects your statutory rights.

The crossed out wheellie bin symbol on this item indicates that this appliance needs to be disposed of in an environmentally friendly way when it becomes of no further use or has worn out. Contact your local authority for details of where to take the item for recycling.





\*To be eligible for the extended guarantee, go to [www.beldray.com](http://www.beldray.com) and register your product within 30 days of purchase.

Find us on 

[www.facebook.com/Beldray](http://www.facebook.com/Beldray)



Manufactured by:  
UP Global Sourcing UK Ltd.,  
**UK.** Manchester OL9 0DD.  
**Germany.** 51149 Köln.

[www.beldray.com](http://www.beldray.com)

©Beldray Trademark. All rights reserved.

CD140721/MD180321/V1