

**Beldray**<sup>®</sup> est 1872  
FOR **150** YEARS

Our powerful,  
ergonomic &  
lightweight  
vacuum cleaner



**AIRGLIDE  
PET PLUS<sup>+</sup>**

INSTRUCTION MANUAL



[www.beldray.com](http://www.beldray.com)

Please retain instructions for future reference.

## **Safety Instructions**

When using electrical appliances, basic safety precautions should always be followed.

Check that the voltage indicated on the rating plate corresponds with that of the local network before connecting the appliance to the mains power supply.

Children aged from 8 years and people with reduced physical, sensory or mental capabilities or lack of experience and knowledge can use this appliance, only if they have been given supervision or instruction concerning use of the appliance in a safe way and understand the hazards involved.

Children should be supervised to ensure that they do not play with the appliance.

Unless they are older than 8 and supervised, children should not perform cleaning or user maintenance.

If the power supply cord, plug or any part of the appliance is malfunctioning or if it has been dropped or damaged, cease using the product immediately to avoid potential injury.

This appliance contains no user serviceable parts, only a qualified electrician should carry out repairs.

Improper repairs may place the user at risk of harm.

Do not remove from the mains power supply by pulling the cord; switch off and remove the plug by hand.

Do not pull or carry the appliance by its power supply cord.

Do not use the appliance for anything other than its intended use.

Do not use this appliance if any of the openings are blocked.

Take care when equipping accessories with rotating parts as this could cause entrapment.

Switch off the appliance, disconnect it from the mains power supply and allow to cool fully before changing or fitting accessories and before cleaning or user maintenance. Use of an extension cord with the appliance is not recommended. This appliance should not be operated by means of an external timer or separate remote control system. This appliance is intended for domestic use only. It should not be used for commercial purposes.

## **Dos and Don'ts**

### **DO:**

Check that the HEPA filters are kept clear of obstruction. Regularly clean the dust container and HEPA filters to preserve suction and prolong the life of the vacuum cleaner. Clean the turbo pet brush on a regular basis to prevent a build-up of dust and dirt. Clean the dust container and HEPA filters at least every three weeks with clean water to keep the vacuum cleaner working efficiently.

### **DON'T:**

Use the vacuum cleaner without the HEPA filters or dust container in position. Use the vacuum cleaner to pick up flammable liquid, matches, cigarette ends, hot ashes or any hot, burning or smoking objects. Use the vacuum cleaner to pick up water or any other liquid, as this poses risk of an electric shock.



## **Thermal Cut-out Device**

If the dust container and HEPA filters are not cleaned on a regular basis, the vacuum cleaner may overheat, which will cause the thermal cut-out device to activate due to restricted flow of air around the unit. If the vacuum cleaner cuts out, press the power switch to turn it off and unplug it from the mains power supply. Proceed to empty the dust container, clean all of the filters and allow the vacuum cleaner to cool for approx. 1 hour.

## **Care and Maintenance**

Always unplug the vacuum cleaner from the mains power supply before attempting any cleaning or maintenance.

Wipe the external surface of the vacuum cleaner with a soft, damp cloth and allow to dry thoroughly.

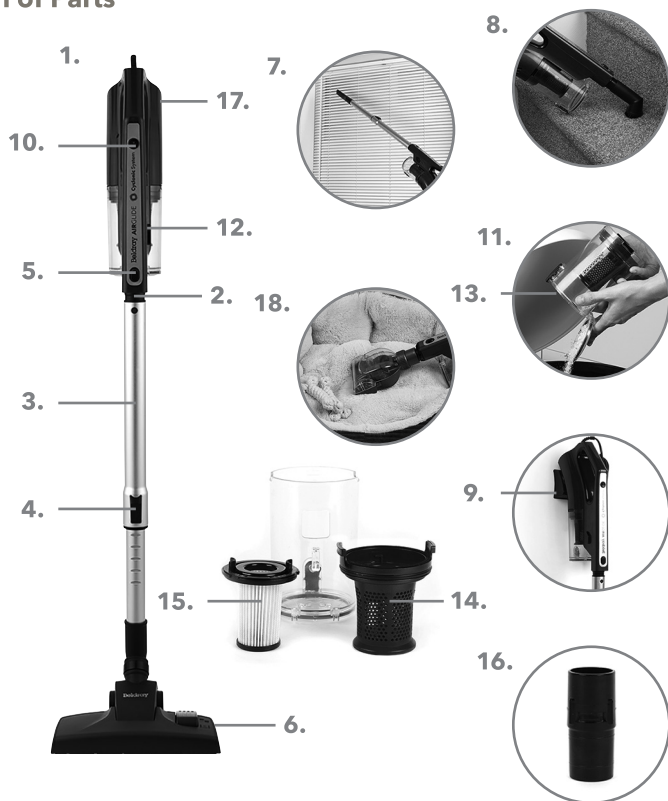
Do not use any harsh or abrasive detergents or cleaning agents to clean any part of the vacuum cleaner.

Clean the filters after every removal of the dust container.

To clean the inside of the dust container it is possible to remove the cyclonic cone.

Keep the HEPA filter clean and replace when it becomes worn.

## Description of Parts



- |                                     |                                       |
|-------------------------------------|---------------------------------------|
| 1. Airglide Pet Plus+ main unit     | 10. Power switch                      |
| 2. Air inlet                        | 11. Dust container                    |
| 3. Telescopic extension tube        | 12. Dust container release button     |
| 4. Telescopic extension tube button | 13. Dust container base release latch |
| 5. Accessory adaptor release button | 14. Cyclonic cone                     |
| 6. Floor brush                      | 15. HEPA filter                       |
| 7. Crevice tool                     | 16. Accessory adaptor                 |
| 8. Brush tool                       | 17. Outlet HEPA filter                |
| 9. Wall-mountable storage base      | 18. Turbo pet brush                   |



## Instructions for Use

### Before First Use

Before using the vacuum cleaner for the first time, wipe it with a soft, damp cloth and dry thoroughly.

Do not immerse the vacuum cleaner in water or any other liquid.

### Installing the Wall-mountable Storage Base

The wall-mountable storage base can be fixed to a wall.

**STEP 1:** Using a pencil, mark the positions of two screw holes, 65 mm apart, on the desired surface. The markings should be horizontally aligned using a spirit level (not included).

**STEP 2:** Using a suitable drill bit, no larger than 5 mm in diameter, drill 30 mm deep pilot holes into the markings. Consult a qualified professional if required.

**STEP 3:** Firmly place the wall plugs into the pilot holes so that they sit flush with the surface of the wall.

**STEP 4:** Position the wall-mountable storage base onto the surface, aligning the holes on the surface with those on the wall-mountable storage base.

**STEP 5:** Insert the screws provided through the wall-mountable storage base and into the wall and tighten so that the wall-mountable storage base sits flush with the surface.

**STEP 6:** Slide the vacuum cleaner into position on the wall-mountable storage base, ensuring that it engages with the supports.

**NOTE:** Check that the chosen surface is strong enough to support the wall-mountable storage base.

Make sure that the wall mount is secured at an adequate height to store the fully assembled vacuum cleaner.

Consult a qualified professional if required.

**CAUTION:** Check that there are no electrical, plumbing or gas supplies situated beneath the surface of the wall. These services normally run vertically or horizontally behind the wall, and the electrical wiring will radiate from the socket, possibly in more than one direction. Testers are available from good DIY stores. Consult a qualified professional if required.

## Using the Airslide Pet Plus<sup>+</sup>

**STEP 1:** Plug in and switch on the vacuum cleaner at the mains power supply.

**STEP 2:** Turn on the vacuum cleaner by pressing the power switch to the on position. To turn it off, press the power switch to the off position.

**WARNING:** Do not use the vacuum cleaner without the HEPA filters, dust container or cyclonic cone in position. Make sure that the filters and the dust container are regularly cleaned to preserve the suction and prolong the life of the vacuum cleaner.

## Using the Telescopic Extension Tube

The floor brush and crevice and brush tools fit onto the telescopic extension tube to allow for a more accessible and convenient clean. Before fitting any accessories, make sure that the accessory adaptor is attached to the handheld unit and check that the vacuum cleaner is disconnected from the mains power supply.

**STEP 1:** Fit the accessory adaptor onto the handheld unit.

**STEP 2:** To attach the telescopic extension tube to the main unit, firmly push the end of the telescopic tube onto the accessory adaptor. To remove the telescopic extension tube, carefully pull it away from the accessory adaptor.

**STEP 3:** Push the chosen attachment onto the end of telescopic extension tube and secure into place.

**STEP 4:** Adjust the telescopic extension tube to the required length by pressing the telescopic extension tube button down and sliding the inner tube in or out.

**STEP 5:** Turn on the vacuum cleaner by pressing the power switch.

**NOTE:** The telescopic extension tube comes disassembled. The accessory adaptor must be attached to the handheld unit before attaching the telescopic tube.

## Using the Floor Brush

**STEP 1:** Fit the telescopic extension tube and accessory adaptor onto the vacuum cleaner.

**STEP 2:** Adjust the telescopic extension tube to the required length by pressing the telescopic extension tube button down and sliding the inner tube in or out.

**STEP 3:** Push the floor brush onto the end of the telescopic extension tube and secure into place.

**STEP 4:** Turn on the vacuum cleaner by pressing the power switch.

**STEP 5:** To remove the floor brush, turn off the vacuum cleaner by pressing the power switch and then pull the floor brush firmly away from the end of the chosen attachment.

**NOTE:** Lower the switch on the floor brush to expose the bristles for use on hard floors. Lift the switch to hide the bristles for use on carpets.

## Using the Crevice and Brush Tools

The crevice tool is ideal for removing dust and dirt from corners and recesses.

The brush tool is perfect for cleaning upholstery and fabrics.

**STEP 1:** If required, fit the extension tube and accessory adaptor onto the vacuum cleaner following the instructions in the section entitled 'Using the Telescopic Extension Tube'.

**STEP 2:** Push the chosen attachment onto the end of the telescopic extension tube, make sure that it is secured in place. If no extension is required, make sure that the accessory adaptor is attached to the air inlet and then push the chosen attachment directly on to the accessory adaptor.

**STEP 3:** To remove the chosen attachment, carefully pull it away from the end of the telescopic extension tube or air inlet.

## Using the Turbo Pet Brush

The turbo pet brush is ideal for removing pet hair from carpet or upholstery.

**STEP 1:** Fit the accessory adaptor onto the handheld unit.

**STEP 2:** Fit the turbo pet brush onto the accessory adaptor. For greater reach, first attach the telescopic extension tube then fit the turbo pet brush.

**STEP 3:** Turn on the vacuum cleaner by pressing the power button; press the power button again to switch it off.

**WARNING:** Do not use the turbo pet brush on pets.

## Emptying the Dust Container

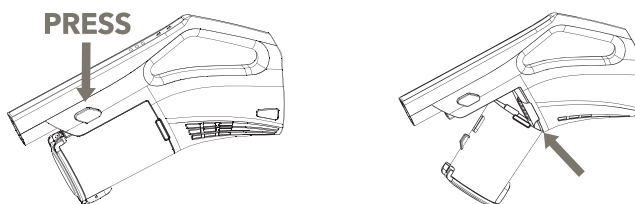
Before emptying the dust container, switch off and unplug the vacuum cleaner from the mains power supply and check that any attachments have been removed from the air inlet. It is recommended to empty the dust container outdoors.

**STEP 1:** Whilst securely holding the vacuum cleaner main unit, press the dust container base release latch to open the base of the dust container. Empty the dust container slowly and carefully to reduce the amount of dust released back into the atmosphere.

**STEP 2:** Close the dust container by pushing the base closed until the dust container base release latch locks back into position.

**NOTE:** Always close the dust container base before using the vacuum cleaner.





## Cleaning the Dust Container and HEPA Filter

The HEPA filter can only be accessed when the dust container has been removed.

**STEP 1:** Open and empty the dust container following the instructions in the section entitled 'Emptying the Dust Container'.

**STEP 2:** Once the dust container is empty, remove the dust container by pressing the dust container release button and pull the dust container away from the vacuum cleaner main unit.

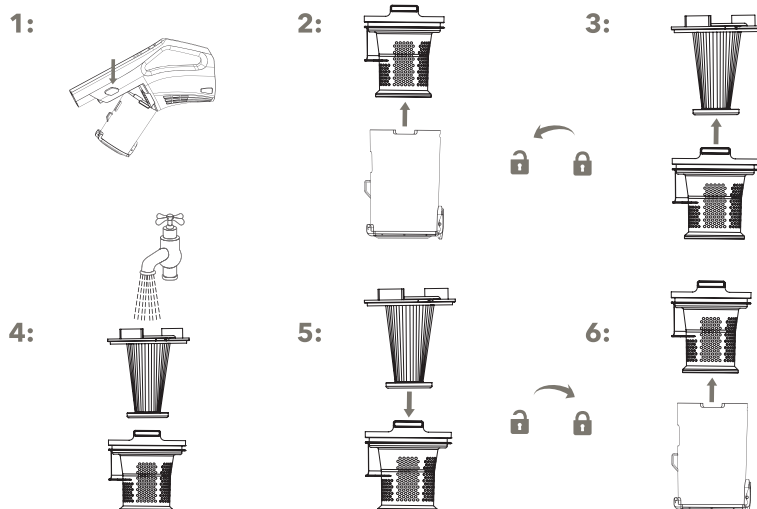
**STEP 3:** Remove the filter cone and HEPA filter by pulling them away from the dust container. Rotate the HEPA filter in an anticlockwise direction and then lift it away from the filter cone.

**STEP 4:** Shake the HEPA filter until the majority of the dust has been removed, then rinse under clean, warm water, and allow to dry naturally.

**STEP 5:** Once the HEPA filter is fully dry, place it back into the filter cone and rotate it in a clockwise direction until it clicks into place.

**STEP 6:** Replace the filter cone into the dust container. It will only fit into the dust container when the filter cone is in the correct position.

**STEP 7:** Attach the bottom part of the dust container first, as below, and then push upwards to lock the container into position.



## Cleaning the Outlet HEPA Filter

Before removing the outlet HEPA filter, switch off and unplug the vacuum cleaner from the mains power supply.

**STEP 1:** To remove the outlet HEPA filter, rotate it in an anticlockwise direction and then lift it away from the vacuum cleaner main unit.

**STEP 2:** Shake the outlet HEPA filter until the majority of the dust has been removed, then rinse under clean, warm water, and allow to dry naturally.

**STEP 3:** Once the outlet HEPA filter is fully dry, place it back into the vacuum cleaner main unit and rotate it in a clockwise direction until it clicks into place.

**NOTE:** Do not clean the HEPA filters using detergents or use external heat sources such as radiators to dry them.

**WARNING:** Do not reassemble or use the vacuum cleaner until both HEPA filters are fully dry, as this could cause damage. Always make sure that the HEPA filter, filter cone and dust container and outlet HEPA filter are fitted before using the vacuum cleaner.

## Cleaning the Turbo Pet Brush

After regular use, the turbo pet brush may become clogged with pet hair and other debris. To maintain optimum performance, it should be cleaned frequently.

**STEP 1:** Remove the turbo pet brush from the telescopic extension tube or suction hose.

**STEP 2:** Detach the removable head by pushing down on the two tabs and lifting it away from the turbo pet brush.

**STEP 3:** Unscrew the locking ring from the turbo pet brush air inlet by rotating it in an anticlockwise direction. This will provide access to the brush bar, belt and impeller.

**STEP 4:** The brush bar and impeller can now be lifted out of the turbo pet brush, allowing for any built-up debris to be removed.

**STEP 5:** Once the turbo pet brush has been cleaned thoroughly, replace the brush bar, checking that the belt is attached correctly and that the spindle end of the impeller is correctly aligned with the corresponding slot on the brush bar.

**STEP 6:** Reattach the top back onto the turbo pet brush, first aligning the locking tabs at the front and then pushing the bottom downwards to secure into place.

**STEP 7:** Screw the locking ring back into position by rotating it in a clockwise direction on the turbo pet brush air inlet.

**NOTE:** Take care when cleaning the turbo pet brush due to the number of small parts.

Keep the turbo pet brush free from a build-up of dust and dirt.  
Clean the turbo pet brush bar on a regular basis.

## Storage

Check that the vacuum cleaner is cool, clean and dry before storing in a cool, dry place.

## Troubleshooting

Symptom	Possible Cause	Solution
The suction is poor.	The accessory or air inlet is blocked.  The dust container is almost full.    The filters are blocked.	Disconnect the accessory and clear the blockage.  Empty the dust container following the instructions in the section entitled 'Emptying the Dust Container'.  Clean the filters following the instructions in the sections entitled 'Cleaning the Dust Container and HEPA Filter' and 'Cleaning the Outlet HEPA Filter'.
The vacuum cleaner has stopped working.	The thermal cut-out device has activated due to restricted air flow, and has cut power to the motor to protect the vacuum cleaner.	Switch off and unplug the vacuum cleaner from the mains power supply. Empty the dust container and clean it following the instructions in the section entitled 'Cleaning the Dust Container and HEPA Filter'. Clean the filters following the instructions in the section entitled 'Cleaning the Dust Container and HEPA Filter'. Allow the vacuum cleaner to cool for approx. 1 hour.

The accessories/telescopic tube won't fit into the handheld unit.	The accessory adaptor is not attached to the handheld unit.	The accessory adaptor must be attached to the handheld unit before connecting any of the accessories/telescopic tube.
---	---	---

**Specifications**

Product code: BEL0947PPTWK-150  
Rated voltage: 220-240 V~ 50-60 Hz  
Rated wattage: 400 W

## Connection to the mains

Please check that the voltage indicated on the product corresponds with your supply voltage.

### Important

As the colours in the mains lead of this appliance may not correspond with the coloured markings identifying the terminals in your plug, please proceed as follows:

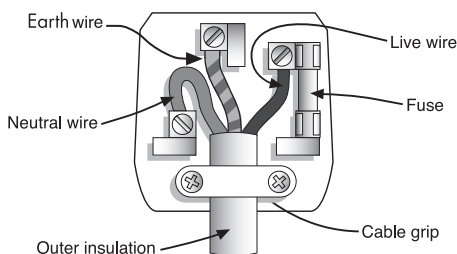
The wires in the mains lead are coloured in accordance with the following code:

Blue Neutral (N)

Brown Live (L)

Green/Yellow Earth ( $\perp$ )

FOR UK USE ONLY - Plug fitting details (where applicable).



The wire coloured BLUE is the NEUTRAL and must be connected to the terminal marked N or coloured BLACK.

The wire coloured BROWN is the LIVE wire and must be connected to the terminal marked L or coloured RED.

The wire coloured GREEN/YELLOW must be connected to the terminal marked with the letter E or marked  $\perp$ .

On no account must either the BROWN or the BLUE wire be connected to the EARTH terminal ( $\perp$ ).

Always ensure that the cord grip is fastened correctly.

The plug must be fitted with a fuse of the same rating already fitted and conforming to BS 1362 and be ASTA approved.

If in doubt consult a qualified electrician who will be pleased to do this for you.

### Non-rewireable mains plug

If your appliance is supplied with a non-rewireable plug fitted to the mains lead and should the fuse need replacing, you must use an ASTA approved one (conforming to BS 1362 of the same rating).

If in doubt, consult a qualified electrician who will be pleased to do this for you.

If you need to remove the plug - DISCONNECT IT FROM THE MAINS and then cut it off the mains lead and immediately dispose of it safely. Never attempt to reuse the plug or insert it into a socket outlet as there is a danger of an electric shock.



**UP Global Sourcing UK Ltd.,  
UK. Manchester OL9 0DD.  
Germany. 51149 Köln.**

If this product does not reach you in an acceptable condition please contact our Customer Services Department at **[www.beldray.com](http://www.beldray.com)**

Please have your delivery note to hand as details from it will be required.

If you wish to return this product please return it to the retailer from where it was purchased with your receipt (subject to their terms and conditions).

## **Guarantee**

All products purchased as new carry a manufacturer's guarantee; the time period of the guarantee will vary dependent upon the product. Where reasonable proof of purchase can be provided, Beldray will provide a standard 12 month guarantee with the retailer from the date of purchase. This is only applicable when products have been used as instructed for their intended, domestic use. Any misuse or dismantling of products will invalidate any guarantee.

Under the guarantee, we undertake to repair or replace free of any charge any parts found to be defective. In the event that we cannot provide an exact replacement, a similar product will be offered or the cost refunded. Any damages from daily wear and tear are not covered by this guarantee, nor are consumables such as plugs, fuses etc.

Please note that the above terms and conditions may be updated from time to time and we therefore recommend that you check these each time you revisit the website.

Nothing in this guarantee or in the instructions relating to this product excludes, restricts or otherwise affects your statutory rights.

## **Disposal of Waste Batteries and Electrical and Electronic Equipment**



This symbol on the product, its batteries or its packaging means that this product and any batteries it contains must not be disposed of with household waste. Instead, it is the user's responsibility to hand this over to an applicable collection point for the recycling of batteries and electrical and electronic equipment. This separate collection and recycling will help to conserve natural resources and prevent potential negative consequences for human health and the environment due to the possible presence of hazardous substances in batteries and electrical and electronic equipment, which could be caused by inappropriate disposal. Some retailers provide take-back services which allow the user to return exhausted equipment for appropriate disposal.

**It is the user's responsibility to delete any data on electrical and electronic equipment prior to disposal.** For more information about where to drop batteries, electrical and electronic waste off, please contact the local city/municipality office, household waste disposal service, or the retailer.



\*To be eligible for the extended guarantee, go to **guarantee.upgs.com/beldray** and register your product within 30 days of purchase.

Find us on 

[www.facebook.com/Beldray](http://www.facebook.com/Beldray)



Manufactured by:  
UP Global Sourcing UK Ltd.,  
**UK.** Manchester OL9 0DD.  
**Germany.** 51149 Köln.

[www.beldray.com](http://www.beldray.com)

©Beldray Trademark. All rights reserved.

CD050819/MD220222/V4