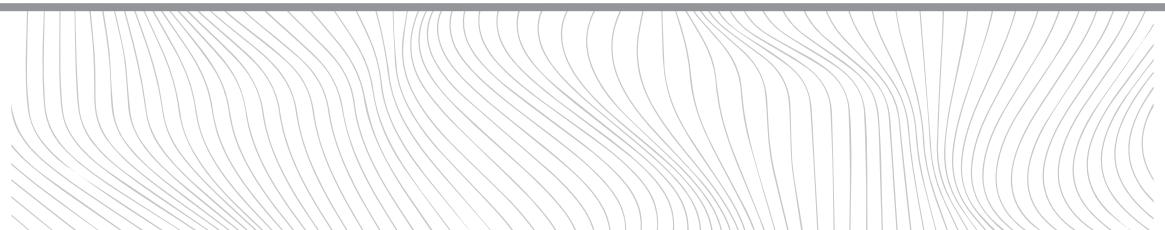
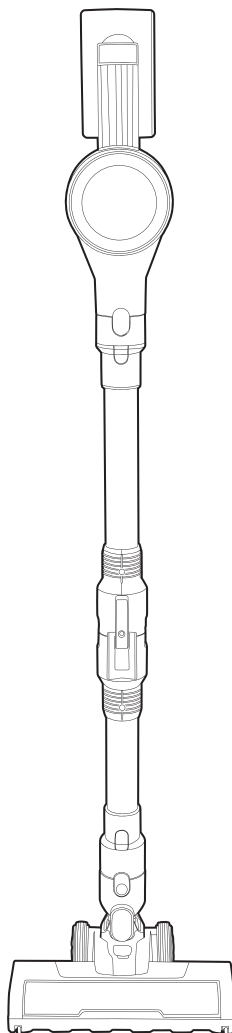


# User manual

Vacuum cleaner

---



# Important safety

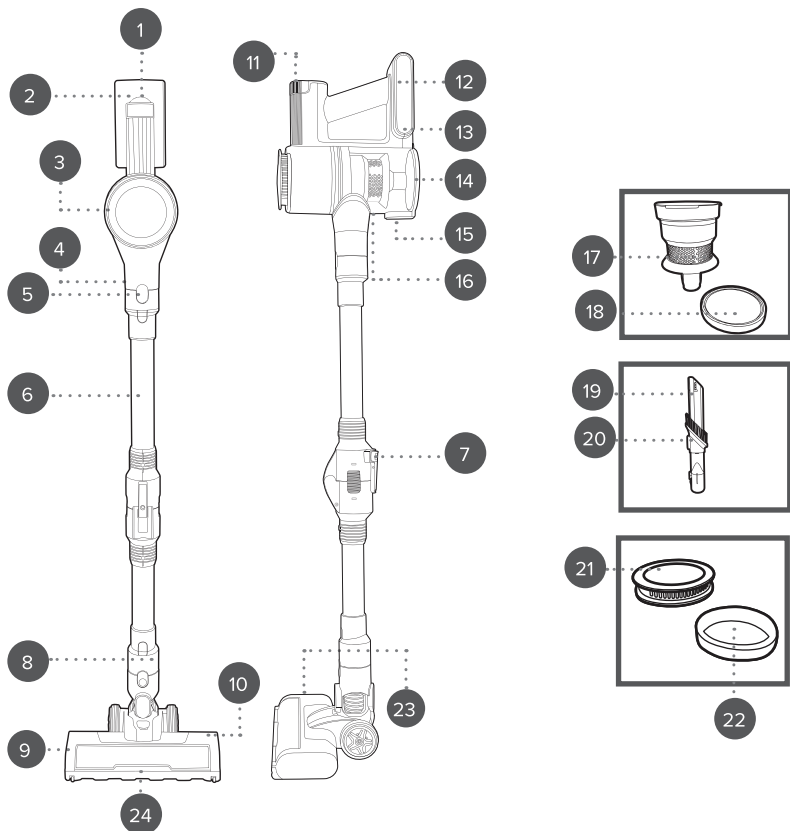
Please read carefully

Please retain instructions for future reference.

## SAFETY INSTRUCTIONS

- When using electrical appliances, basic safety precautions should always be followed.
- This appliance can be used by children aged from 8 years and above and persons with reduced physical, sensory or mental capabilities and knowledge, if they have been supervised/instructed and understand the hazards involved.
- Children shall not play with the appliance.
- Children should not perform cleaning or user maintenance, unless they are older than 8 and supervised.
- This appliance is not a toy.
- If the power supply cord, plug or any part of the appliance is malfunctioning or if it has been dropped or damaged, cease using the product immediately to avoid potential injury.
- This appliance contains no user serviceable parts, only a qualified electrician should carry out repairs. Improper repairs may place the user at risk of harm.
- Keep the appliance and its power supply cord out of the reach of children.
- Keep the appliance out of the reach of children when it is switched on or cooling down.
- Keep the appliance and its power supply cord away from heat or sharp edges that could cause damage.
- Keep the appliance away from other heat emitting appliances.
- Keep the appliance free from dust, lint, hair or anything that may reduce the airflow of the appliance.
- Do not immerse the electrical components of the appliance in water or any other liquid.
- Do not operate the appliance with wet hands or if any connections are wet.
- Do not expose the appliance to rain.
- Do not leave the appliance unattended whilst connected to the mains power supply.
- Do not remove from the mains power supply by pulling the cord; switch off and remove the plug by hand.
- Do not pull or carry the appliance by its power supply cord.
- Do not use the appliance if it has been dropped or if there are visible signs of damage.
- Do not use the appliance for anything other than its intended use.
- Do not use any parts/accessories other than the parts supplied with this appliance, as this may cause damage.
- Do not use this appliance outdoors.
- Do not store the appliance in direct sunlight or in high humidity conditions.
- Do not use this appliance if any of the openings are blocked.
- Do not use the appliance to pick up flammable liquid, matches, cigarette ends, hot ashes or any hot, burning or smoking objects.
- Do not use this appliance to pick up hard, sharp objects, such as glass or nails etc.
- Do not use the appliance to pick up water or any other liquid, as this poses risk of an electric shock.
- Take care when equipping accessories with rotating parts, as this could cause entrapment.
- Use of an extension cord with the appliance is not recommended.
- This appliance should not be operated by means of an external timer or separate remote control system.
- This appliance is intended for domestic use only. It should not be used for commercial purposes.

## Description of parts



1. LED indicator lights
2. Power button
3. Vacuum cleaner main unit
4. Air inlet
5. Flexi tube release button
6. Flexi tube
7. Flexi tube joint button
8. Floor brush release button
9. Floor brush
10. Brush bar
11. Boost button
12. Storage hook
13. Charging port

14. Dust container lid
15. Dust container release button
16. Dust container
17. Filter cone
18. Washable filter
19. 2 in 1 crevice and brush tool
20. Crevice tool button
21. Removable hub cap
22. Exhaust filter
23. Brush bar release tab
24. Floor brush LED lights

Please retain instructions for future reference.

## **BATTERY SAFETY**

The supply terminals are not to be short-circuited.

In the event of a battery pack leaking, do not allow the liquid to come in contact with the skin or eyes. If contact has been made, wash the affected area with copious amounts of water and seek medical advice.

Secondary cells and batteries need to be charged before use. After extended periods of storage, it may be necessary to charge and discharge the battery pack several times to obtain maximum performance.

Do not leave a battery pack on prolonged charge when not in use.

Do not use any charger other than that specifically provided for use with the product.

Do not use any cell or battery which is not designed for use with the product.

Keep batteries out of the reach of children.

Do not crush, puncture, dismantle or otherwise damage batteries.

Do not store above 60 °C.

Avoid storage in direct sunlight.

Do not expose batteries to heat or fire as they may explode.

Do not subject batteries to mechanical shock.

Do not dispose of exhausted battery packs in household waste.

To dispose of the exhausted battery pack, take it to a local recycling station. Contact the local government offices for further details.

This appliance is fitted with a 22.2 V 2200 mAh Li-ion rechargeable battery (non-removable).

## **Dos and don'ts**

### **DO:**

Charge the vacuum cleaner fully before first use.

Check that the filter is kept clear of obstruction.

Make sure that the dust container and filter are cleaned regularly to preserve suction and prolong the life of the vacuum cleaner.

Clean the dust container and filter at least every three weeks with clean water to keep the vacuum cleaner working efficiently.

### **DON'T:**

Use the vacuum cleaner without the filter or filter cone in position.

Use the vacuum cleaner to pick up flammable liquid, matches, cigarette ends, hot ashes or any hot, burning or smoking objects.

Use the vacuum cleaner to pick up water or any other liquid, as this poses risk of an electric shock.

Use the vacuum cleaner without both the filter cone and filter inserted

Use any charging adaptors with the vacuum cleaner other than the one supplied

## **Care and maintenance**

Always unplug the vacuum cleaner from the mains power supply before attempting any cleaning or maintenance.

Wipe the external surface of the vacuum cleaner with a soft, damp cloth and allow to dry thoroughly.

Do not use any harsh or abrasive detergents cleaning agents to clean any part of the vacuum cleaner.

Keep the filter clean and replace when it becomes worn.

## **Instructions for use**

### **Before first use**

Before connecting to the mains power supply, clean the vacuum cleaner following the instructions in the section entitled '**Care and maintenance**'.

Do not immerse the vacuum cleaner in water or any other liquid.

### **Charging the vacuum cleaner**

Before first use, the vacuum cleaner must be charged for approx. 4–5 hours. Subsequent charging times will vary dependent on use. If the vacuum cleaner battery becomes drained completely during use, it may take up to 4–5 hours to fully recharge.

**STEP 1:** Check that the vacuum cleaner is switched off.

**STEP 2:** Connect the mains power adaptor to the charging port on the handheld unit.

**STEP 3:** Plug the mains power adaptor into the mains power supply; the LED indicator lights will flash during charging. Once the battery is fully charged, the LED indicator lights will remain illuminated.



**WARNING:** Do not use any mains power adaptor other than that supplied. Using an alternative will increase the risk of damage to the appliance or injury to the user.

If the LED indicator lights do not illuminate when the charger is first plugged in:

**STEP 1:** Unplug the charger from the vacuum cleaner.

**STEP 2:** Turn on the vacuum cleaner for approx. 5 seconds.

**STEP 3:** Turn off the vacuum cleaner.

**STEP 4:** Reattach the charger to the vacuum cleaner; make sure it is fully inserted into the charging port. The LED lights should now illuminate to indicate that the vacuum cleaner is charging.

### Using the vacuum cleaner

**STEP 1:** Check that the vacuum cleaner is disconnected from the mains power adaptor after unplugging it from the mains power supply.

**STEP 2:** Turn on the vacuum cleaner by pressing the power button. The vacuum cleaner will be on the minimum power setting; press the boost button to use the maximum power setting.



**WARNING:** Do not use the vacuum cleaner without the filter or filter cone in position.

### Using the flexi tube and floor brush

The flexi tube can be fitted onto the air inlet to extend reach, ideal for under furniture and floor-to-ceiling cleaning.

**STEP 1:** Fit the flexi tube onto the air inlet by aligning the clip and carefully pushing the flexi tube towards the vacuum cleaner main unit until it clicks into position. To release the flexi tube, press the flexi tube release button and pull it away from the vacuum cleaner main unit.

**STEP 2:** Attach the floor brush by aligning the clip on the floor brush with the bottom of the flexi tube. Carefully push together to secure into place. To release the floor brush, press the floor brush release button and pull it away from the flexi tube.

**STEP 3:** Turn on the vacuum cleaner by pressing the power button.

**STEP 4:** To reach under furniture, press the flexi tube joint button. When finished, straighten the tube until it clicks and locks into place.

### Using the 2 in 1 crevice and brush tool

**STEP 1:** If required, fit the flexi tube onto the air inlet following the instructions in the section entitled 'Using the flexi tube and floor brush'.

**STEP 2:** Push the 2 in 1 crevice and brush tool onto the end of the flexi tube until it clicks into place. If no extension is required, push the 2 in 1 crevice and brush tool directly onto the air inlet until it clicks into place.

**STEP 3:** Press the button on the accessory and slide the brush bar back to use as a crevice tool, ideal for removing dust and dirt from corners and recesses.

Press the button on the accessory and slide the brush bar forward to use as a brush tool, perfect for cleaning upholstery and fabrics.

**STEP 4:** To remove the 2 in 1 crevice and brush tool, press the release button on the vacuum cleaner main unit or flexi tube and pull away.

### Emptying the dust container

To maintain optimum performance, the dust container must be emptied regularly. If there is a reduction in suction power, empty the dust container.

Before emptying the dust container, check that the vacuum cleaner is switched off and any attachments have been removed from the air inlet.

**STEP 1:** Whilst securely holding the vacuum cleaner main unit, press the dust container base release latch. Empty the dust container slowly and carefully to reduce the amount of dust released back into the atmosphere.

**STEP 2:** Close the dust container by pushing the base closed until the dust container base release latch locks back into position.



**NOTE:** It is recommended to empty the dust container outdoors. Always close the dust container base before using the vacuum cleaner.

### Cleaning the filter and filter cone

The filter can only be accessed when the dust container is open.

**STEP 1:** Empty the dust container following the instructions in the section entitled '**Emptying the dust container**'.

**STEP 2:** Remove the filter and filter cone by rotating them in an anticlockwise direction and lifting them out of the vacuum cleaner main unit.

**STEP 3:** Carefully lift the filter out of the filter cone. Shake the filter until the majority of the dust has been removed, then rinse under clean, warm water and allow to dry naturally.

**STEP 4:** Once the filter is fully dry, place it back into the filter cone. Replace the filter cone by aligning the indents on the filter cone with those on the top of the vacuum cleaner main unit. Secure into place by rotating the filter cone in a clockwise direction.

**STEP 5:** Close the dust container by pushing it firmly shut until it clicks into position.



**NOTE:** The filter and filter cone should be thoroughly cleaned at least once every two weeks. Do not clean the filter using detergents or use external heat sources such as radiators to dry them.



**WARNING:** Do not reassemble or use the vacuum cleaner until the filter is fully dry, as this could cause damage.

### Cleaning the exhaust filter

The exhaust filter is located beneath the nameplate on the vacuum cleaner main unit.

**STEP 1:** To remove the exhaust filter for cleaning, rotate the removable hub cap in an anticlockwise direction and pull it away from the vacuum cleaner main unit.

**STEP 2:** Remove the exhaust filter from the top of the motor.

**STEP 3:** Shake off the exhaust filter until the majority of the dust has been removed, then wash it under clean, warm water and allow to dry thoroughly.

**STEP 4:** Once the exhaust filter has dried fully, slot it back into the exhaust filter housing and replace the removable hub cap, locking it back into place by rotating it in a clockwise direction.



**WARNING:** Do not clean the exhaust filter using detergent. Always allow the exhaust filter and mesh filter to air dry; never use external heat sources, such as a radiator to dry them. Do not wring or twist the exhaust filter as this will cause damage. Do not use the vacuum cleaner without any of the filters or the filter cone in position, as this could cause damage.

### Cleaning the floor brush

The floor brush has a removable brush bar for easy cleaning.

**STEP 1:** Switch off the vacuum cleaner and remove the floor brush by pressing the floor brush release button and pulling it away from the extension tube.

**STEP 2:** Push the brush bar release tab to the unlocked position and remove the brush bar by pulling it away from the floor brush.

**STEP 3:** Remove any built-up dust, debris and hair from the brush bar and floor brush.

**STEP 4:** Replace the brush bar into the floor brush by aligning it on both sides and pushing it into the floor brush until it clicks.

## Cleaning the pet tool

After regular use, the pet tool may become clogged with pet hair and other debris. To maintain optimum performance, it needs to be cleaned frequently.

**STEP 1:** Remove the pet tool from the flexi tube or air inlet.

**STEP 2:** Press the pet tool brush bar release tab and rotate the pet tool brush bar in an anticlockwise direction.

**STEP 3:** Lift the brush bar out of the pet tool and remove any debris.

**STEP 4:** Once the pet tool has been thoroughly cleaned, replace the brush bar, checking that the spindle end of the impeller is correctly aligned with the corresponding slot on the brush bar.

**STEP 5:** Press the pet tool brush bar release tab and twist the brush bar in a clockwise direction until it locks into place.



**NOTE:** Take care when cleaning the pet tool due to the number of small parts. Keep the pet tool free from a build-up of dust and dirt. Clean the pet tool brush bar on a regular basis.

## Installing the wall mount storage base

The wall mount storage base can be fixed to a wall for convenient storage. To store the vacuum cleaner whilst it is charging, check that the wall mount storage base is close enough to the mains power supply to avoid overstretching the charging wire.

**STEP 1:** Using a pencil, mark the positions of 2 screw holes on the desired surface. The markings should be horizontally aligned using a spirit level.

**STEP 2:** Using a suitable drill, drill pilot holes into the markings. Consult a qualified professional if required.

**STEP 3:** Firmly place the wall plugs into the pilot holes so that they sit flush with the surface of the wall.

**STEP 4:** Position the wall mount storage base onto the surface, aligning the holes on the surface with those on the wall mount storage base.

**STEP 5:** Insert the screws provided through the wall mount storage base and into the wall and tighten so that the wall mount storage base sits flush with the surface. Check that the hook on the wall mount storage base is facing upwards.

**STEP 6:** Slide the vacuum cleaner into position on the wall mount storage base, making sure that it engages with the hook.



**NOTE:** Check that the chosen surface is strong enough to support the wall mount storage base and vacuum cleaner. Make sure that the wall mount is secured at an adequate height to store the fully assembled vacuum cleaner.



**CAUTION:** Check that there are no electrical, plumbing or gas supplies situated beneath the surface of the wall. These services normally run vertically or horizontally behind the wall, and the electrical wiring will radiate from the socket, possibly in more than one direction. Testers are available from reputable DIY stores. Consult a qualified professional if required.

## Storage

Check that the vacuum cleaner is cool, clean and dry before storing in a cool, dry place.

Store the mains power adaptor separately, checking that it is not bent at the connections, as this could cause damage to the wires.

## Troubleshooting

Problem	Possible cause	Solution
The vacuum cleaner will not charge.	The mains power adaptor is not securely connected.	Connect the mains power adaptor to the charging port on the vacuum cleaner main unit, following the instructions in the section entitled ' <b>Charging the vacuum cleaner</b> '.
The suction is poor.	The air inlet or attachment is blocked.	Disconnect the attachment and clear the blockage.
	The dust container is almost full.	Empty the dust container following the instructions in the section entitled ' <b>Emptying the dust container</b> '.
	The filter is blocked	Clean the filter following the instructions in the section entitled ' <b>Cleaning the filter and filter cone</b> '.
The brush bar is not rotating.	The brush bar is blocked due to built-up hair, dust and debris.	Clean the floor brush following the instructions in the section entitled ' <b>Cleaning the floor brush</b> '.

## Specifications

Product code: BEL01843FLX

Battery: 22.2 V  $\equiv$  2200 mAh Li-ion

Adaptor input: 100–240 V  $\sim$  50/60 Hz, 0.5 A

Adaptor output: 27.0 V  $\equiv$  0.5 A, 13.5 W

Average active efficiency: 83.67%

Efficiency at low load (10%): 67.93%

No load power consumption: 0.097 W

Dust tank capacity: 500 ml





**EN | Disposal of Waste Batteries and Electrical and Electronic Equipment**



This product is labelled with this crossed out wheel bin symbol in accordance with European Directive 2012/19/EC to indicate that it must not be disposed of with your other household waste. Due to the presence of hazardous substances, mixtures or components, electrical and electronic devices that are not subject to selective sorting are potentially dangerous to the environment and human health. Please check your local city office or waste disposal service for the return and recycling of this product.

Manufactured by:  
Ultimate Products UK Ltd.,  
Victoria Street, Manchester OL9 0DD. **UK.**  
Ultimate Products Europe Ltd.,  
19 Baggot Street Lower, Dublin D02 X658. **ROI.**

**MADE IN CHINA.**

CD151124/MD000000/V1