



**WARNING:** The blades are delicate and sharp; exercise care during cleaning. Keep fingers and hands away from the blades during cleaning and maintenance.

## Storage

Check that the lint remover is cool, clean and dry before storing in a cool, dry place.

## Troubleshooting

Problem	Possible cause	Solution
The lint remover will not turn on.	The lint remover has run out of charge.	Charge the lint remover following the instructions in the section entitled ' <b>Charging the lint remover</b> '.
The lint remover is not removing lint from fabric.	Lint is wrapped around the blades.	Clean the blades following the instructions in the section entitled ' <b>Cleaning the lint remover</b> '.

## Specifications

Product code: BEL02088

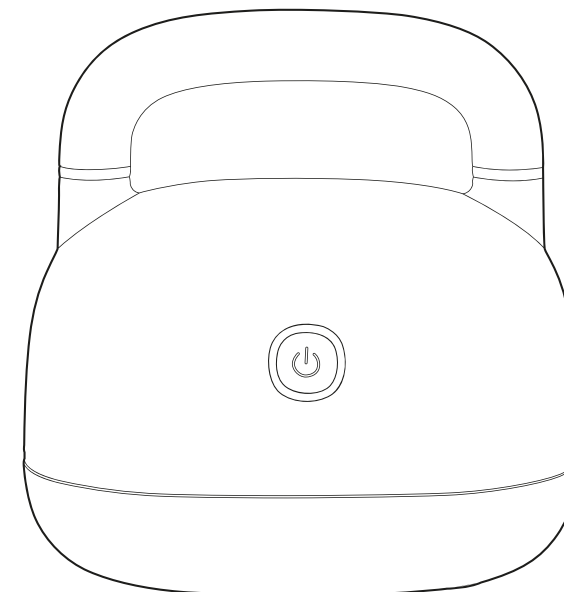
Battery: 1 x 1400 mAh lithium batteries

Working voltage: 3.2 V 

Charging voltage: 5 V  1 A

# User manual

Lint remover



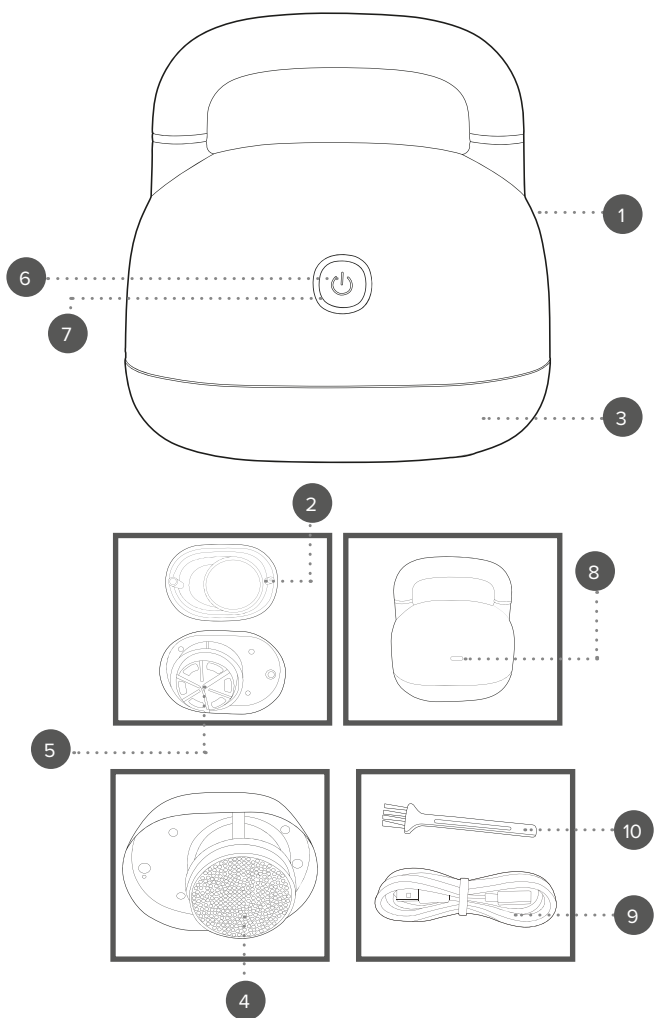
Manufactured by:  
Ultimate Products UK Ltd.,  
Victoria Street, Manchester OL9 0DD. **UK.**  
Ultimate Products Europe Ltd.,  
19 Baggot Street Lower, Dublin D02 X658. **ROI.**

**MADE IN CHINA.**

CD191124/MD000000/V1

Please retain instructions for future reference.

## Description of parts



1. Lint remover main body
2. Lint container magnetic cover
3. Lint container
4. Blade cover
5. Blades
6. Power button
7. Power/charging indicator light
8. USB-C charging port
9. USB-C charging cable
10. Cleaning brush

## BATTERY SAFETY

- The supply terminals are not to be short-circuited.
- In the event of a battery and cell leaking, do not allow the liquid to come in contact with the skin or eyes. If contact has been made, wash the affected area with copious amounts of water and seek medical advice.
- Do not use any cell or battery which is not designed for use with the product.
- Secondary cells and batteries need to be charged before use. After extended periods of storage, it may be necessary to charge and discharge the cells or batteries several times to obtain maximum performance.
- Keep batteries out of the reach of children.
- Do not dispose of batteries in a fire.
- Do not dismantle, open or shred secondary cells or batteries.
- Do not expose cells or batteries to heat or fire.
- Do not crush, puncture, dismantle or otherwise damage batteries.
- Do not store above 60 °C.
- Avoid storage in direct sunlight.
- Do not subject batteries to mechanical shock.
- Do not dispose of exhausted batteries in household waste.
- Once the batteries have been exhausted, dispose of the unit at a local recycling station. Contact the local government offices for further details.
- This product is fitted with 1 x 1400 mAh lithium batteries (non-removable).

## Care and maintenance

Always switch off and unplug the lint remover from the mains power supply before attempting any cleaning or maintenance.

**STEP 1:** Wipe the lint remover with a soft, damp cloth and dry thoroughly.

**STEP 2:** Check that the blades are free from debris (e.g., hair), as this could affect the performance of the lint remover.



**NOTE:** The lint container should be emptied and cleaned after each use.

## Charging the lint remover

Charging times will take max. 3 hours, dependent on use.

**STEP 1:** Connect the USB-C end of the USB-C charging cable (included) into the USB-C charging port on the lint remover.

**STEP 2:** Plug the USB end of the USB-C charging cable into a compatible USB charging port; the power/charging indicator light will illuminate red to indicate that the battery is charging. Once the battery is fully charged, the charging indicator light will flash white.



**NOTE:** Whilst charging, the lint remover may become warm.



**CAUTION:** Exercise caution when charging the lint remover; it must be stood upright on a dry, stable surface, away from other appliances.



**WARNING:** When the battery power is low, the power/charging indicator light will flash red. It is recommended to charge the lint remover slightly before storage. This will help to prolong the life of the battery.

## Using the lint remover

**STEP 1:** Attach the lint container magnetic cover to the lint remover main body and place the garment to be treated onto a flat, even and clean surface. Straighten the garment to minimise creases.

**STEP 2:** Press the power button once; the lint remover will power on in with the low speed and the power/charging indicator light will illuminate slightly white. Press the power button twice; the lint remover will change to the high speed and the power/charging indicator light will illuminate bright white.

**STEP 3:** Guide the lint remover over the garment using repeated, light, circular movements across the surface of the fabric.

**STEP 4:** Switch off the lint remover by pressing the power button; the indicator light will turn off.



**NOTE:** The lint remover will switch off automatically when the blade cover is unscrewed. To activate the safety/travel lock, press and hold the power button for approx. 5 seconds when the lint remover is off. The indicator light will flash white 3 times, indicating that it is locked. To cancel the safety/travel lock, press and hold the power button for approx. 5 seconds. The lock will be cancelled and the lint remover can be used again. Max. operation time for speed 1 is approx. 3 hours. Max. operation time for speed 2 is approx. 2 ½ hours.



**WARNING:** To avoid damage to fabrics, always use the lint remover on a flat surface. Do not use the lint remover on buttons, embroidery, zips, loose threads or stitches. Do not apply too much pressure during use to avoid damaging fabric.

## Cleaning the lint remover

**STEP 1:** Remove the lint remover magnetic cover. Empty any lint from the container into a bin after each use with the cleaning brush.

**STEP 2:** Remove the blade cover by unscrewing it in an anticlockwise direction.

**STEP 3:** Carefully remove the blades; use the cleaning brush to scrape off fluff and lint remnants.

**STEP 4:** Reattach the blades by pushing back onto the lint remover main body until secure. Replace the blade cover by rotating in a clockwise direction until secure.

**STEP 5:** Replace the lint remover magnetic cover.