

Beldray[®] est 1872

Our **warm,**
portable &
convenient
fan heater



2000 W FLAT **FAN HEATER** INSTRUCTION MANUAL

*This product is only suitable for well-insulated spaces or occasional use.



www.beldray.com

Please retain instructions for future reference.

WARNING - READ BEFORE USE

Do not leave the product unattended while in use.

This product can be used for no longer than 4 hours, after which it must be switched off and allowed to cool fully before it is used again.

The product must be used on a stable, heat-resistant surface.

The product must be placed at least 1 metre away in every direction from walls, doors, furniture, curtains, or any other flammable materials.

Safety Instructions

When using electrical products, basic safety precautions should always be followed.

Check that the voltage indicated on the rating plate corresponds with that of the local network before connecting the product to the mains power supply.

Children aged from 8 years and people with reduced physical, sensory or mental capabilities or lack of experience and knowledge can use this appliance, only if they have been given supervision or instruction concerning use of the appliance in a safe way and understand the hazards involved.

Children should not carry out cleaning or user maintenance without supervision.

Children should be supervised to ensure that they do not play with the product.

This product is not a toy.

If the power supply cord, plug or any part of the appliance is malfunctioning or if it has been dropped or damaged, cease using the product immediately to avoid potential injury.

This appliance contains no user serviceable parts, only a qualified electrician should carry out repairs.

Improper repairs may place the user at risk of harm.

Keep the product and its power supply cord out of the reach of children.

Keep the product and its power supply cord away from heat or sharp edges that could cause damage.

Keep the power supply cord away from any parts of the product that may become hot during use.

Keep the product away from other heat emitting products.

Keep furniture, curtains and other flammable material at least 1 metre away from the product.

Do not run the supply cord under carpets, rugs etc. or anywhere where it may present a trip hazard.

Do not immerse the product or plug in water or any other liquid.

Do not operate the product with wet hands.

Do not use this product in the immediate surroundings of a bath, a shower or swimming pool.

Do not leave the product unattended whilst connected to the mains power supply or when in use.

Do not remove from the mains power supply by pulling the cord; switch off and remove the plug by hand.

Do not use this product for extended periods of time.

Do not use the product for anything other than its intended use.

Do not cover this product.

Do not block the air intake of the product; place in an open, well-ventilated space.

Do not use this product outdoors.

Do not attempt to move the product whilst it is in use.

Do not touch the product during use, as it will get very hot and could cause injury.

Do not put objects into any of the openings.

Do not use the product with a programmer, timer, separate remote-control system or any other device that will switch the product on automatically, as there is a risk of fire if the heater is covered or positioned incorrectly.

Do not clean the product with abrasive chemicals or materials such as scourers as they may damage the product and impair future function.

The product should be used on a stable, heat-resistant surface. The product must not be located immediately below or next to a mains power supply.

Always unplug the product after use and before any cleaning or maintenance.

Always ensure that the product has cooled fully after use, before any cleaning or maintenance.

Never use accessories that are not recommended or supplied by the manufacturer. It could cause danger to the user and damage to the product.

Use of an extension cord with the product is not recommended.

This product is intended for domestic use only. It should not be used for commercial purposes.



CAUTION: Some parts of this product can become very hot and cause burns. Particular attention has to be given where children and vulnerable people are present.



Hot surface - do not touch the hot section or heating components of the product.



WARNING: In order to avoid overheating, do not cover the product.

To prevent overheating, do not use in dusty environments or on surfaces such as pile carpet - fibres and dust may get into the fan and cause blockages.

Do not use this product in small rooms whilst occupied by persons incapable of leaving the room on their own, unless constant supervision is provided.

Nominal voltage is still present in this product as long as the product is connected to the electrical source. Always unplug the product when not in use.

In order to avoid a hazard, due to inadvertently tripping the thermal

cut-out, this appliance must not be supplied through an external switching device, such as a timer. Nor should it be connected to a circuit that is regularly switched on and off by the utility.

Thermal Cut-out Device

The fan heater is fitted with a thermal safety cut-out device, built in to prevent it from overheating. Should the fan heater start to overheat, the thermal safety cut-out system will automatically operate and the heat settings will switch off. If this happens:

STEP 1: Switch off the fan heater by turning the heat control dial to ().

STEP 2: Check that the fan heater is unplugged from the mains power supply and allow it to cool for approx. 15 minutes.

STEP 3: Clear any blockages present on the vent, being careful not to damage the fan heater.

STEP 4: Plug in and switch on the fan heater at the mains power supply.

CAUTION: In order to avoid a hazard, due to inadvertent resetting of the thermal cut-out, this fan heater must not be supplied through an external switching device such as a timer or connected to a circuit that is regularly switched on and off by the product.

Care and Maintenance

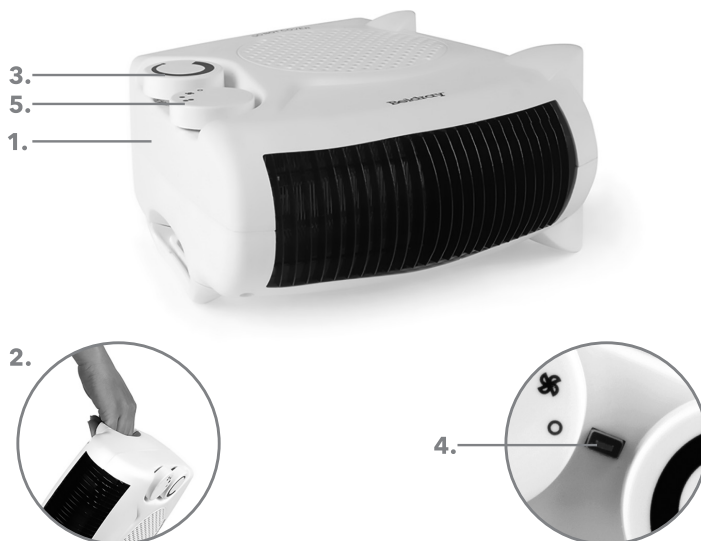
Always unplug the fan heater from the mains power supply and allow to cool sufficiently before performing any cleaning or maintenance.

Wipe the fan heater with a soft, damp cloth and allow to dry thoroughly.

Do not use harsh or abrasive cleaning solvents, as these may damage the finish of the fan heater.

Do not immerse the fan heater in water or any other liquid.

Description of Parts



- 1. 2000 W Flat Fan Heater
- 2. Carry handle
- 3. Adjustable thermostat

- 4. Power indicator light
- 5. Heat control dial

Instructions for Use

Before First Use

STEP 1: Check that there is no damage to the fan heater.

STEP 2: Position the fan heater on a flat, stable, heat-resistant surface in an open space, at least 1 metre away from furniture, curtains or any other flammable materials. Do not block the air intake on the back of the fan heater.

NOTE: When using the fan heater for the first time, a slight odour may be emitted. This is normal and will soon subside. Allow for sufficient ventilation around the fan heater.

Using the 2000 W Flat Fan Heater

STEP 1: Plug in and switch on the fan heater at the mains power supply.

STEP 2: To turn on the fan heater, select a heat setting by turning the heat control dial in a clockwise direction to the desired position; (☼) will emit cool air, whilst (●) and

(●●) will produce hot air with a low heat setting (1000 W) and a high heat setting (2000 W) respectively.

STEP 3: Whilst using the heat settings, the adjustable thermostat can be used to finely regulate the room temperature. Turn it in a clockwise direction to have the fan heater on for longer; this will increase the room temperature. To reduce it, turn the adjustable thermostat in an anticlockwise direction.

STEP 4: Turn off the fan heater by turning the heat control dial to (○).

NOTE: The heat indicator light will illuminate whilst the fan heater is warming up and will cycle on and off during use to show that the correct temperature is being maintained. The fan heater will only produce heat if the adjustable thermostat is at a higher temperature than the room temperature.

Storage

Check that the fan heater is completely cool before storing in a cool, dry place. Never wrap the cord tightly around the fan heater; wrap it loosely to avoid causing damage.

Specifications

Product code: EH0569S

Voltage: 220-240 V ~ 50 Hz

Power: 1800-2000 W

ERP Table

Item	Symbol	Value	Unit	Item	Unit
Heat Output				Type of heat input for electric storage local space heaters only.	
Nominal heat output	P_{nom}	1,8-2	kW	Manual heat charge control, with integrated thermostat.	No
Nominal heat output (indicative)	P_{min}	0,015	kW	Manual heat charge control with room and/or outdoor temperature feedback.	No
Maximum continuous heat output	$P_{max,c}$	2	kW	Electronic heat charge control with room and/or outdoor temperature feedback.	No
Auxiliary electricity consumption				Fan assisted heat output.	No
At nominal heat output	el_{max}	N/A	kW	Type of heat output/room temperature control (select one).	
At minimum heat output	el_{min}	N/A	kW	Single stage heat output and no room temperature control.	No
In standby mode	el_{SB}	N/A	kW	Two or more manual stages, no room temperature control.	No
				With mechanic thermostat room temperature control.	Yes
				With electronic room temperature.	No
				Electronic room temperature control plus day timer.	No
				Electronic room temperature control plus week timer.	No
				Other control options	
				Room temperature control, with presence detection.	No
				Room temperature control, with open window detection.	No
				With distance control option.	No
				With adaptive start control.	No
				With working time limitation.	No
				With black bulb sensor.	No

Notes:

Connection to the mains

Please check that the voltage indicated on the product corresponds with your supply voltage.

Important

As the colours in the mains lead of this appliance may not correspond with the coloured markings identifying the terminals in your plug, please proceed as follows:

The wires in the mains lead are coloured in accordance with the following code:

Blue Neutral (N)

Brown Live (L)

FOR UK USE ONLY - Plug fitting details
(where applicable).

The wire coloured BLUE is the NEUTRAL and must be connected to the terminal marked N or coloured BLACK.

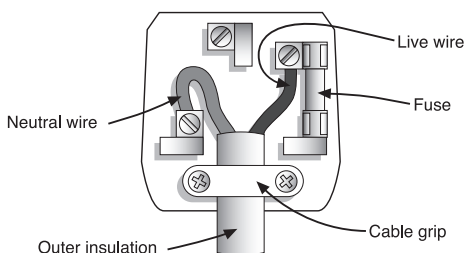
The wire coloured BROWN is the LIVE wire and must be connected to the terminal marked L or coloured RED.

On no account must either the BROWN or the BLUE wire be connected to the EARTH terminal (\perp).

Always ensure that the cord grip is fastened correctly.

The plug must be fitted with a fuse of the same rating already fitted and conforming to BS 1362 and be ASTA approved.

If in doubt consult a qualified electrician who will be pleased to do this for you.



Non-rewireable mains plug

If your appliance is supplied with a non-rewireable plug fitted to the mains lead and should the fuse need replacing, you must use an ASTA approved one (conforming to BS 1362 of the same rating).

If in doubt, consult a qualified electrician who will be pleased to do this for you.

If you need to remove the plug - DISCONNECT IT FROM THE MAINS and then cut it off the mains lead and immediately dispose of it safely. Never attempt to reuse the plug or insert it into a socket outlet as there is a danger of an electric shock.

**UP Global Sourcing UK Ltd.,
UK. Manchester OL9 0DD.
Germany. 51149 Köln.**

If this product does not reach you in an acceptable condition please contact our Customer Services Department at **www.beldray.com**

Please have your delivery note to hand as details from it will be required.

If you wish to return this product please return it to the retailer from where it was purchased with your receipt (subject to their terms and conditions).

Guarantee

All products purchased as new carry a manufacturer's guarantee; the time period of the guarantee will vary dependent upon the product. Where reasonable proof of purchase can be provided, Beldray will provide a standard 12 month guarantee with the retailer from the date of purchase. This is only applicable when products have been used as instructed for their intended, domestic use. Any misuse or dismantling of products will invalidate any guarantee.

Under the guarantee, we undertake to repair or replace free of any charge any parts found to be defective. In the event that we cannot provide an exact replacement, a similar product will be offered or the cost refunded. Any damages from daily wear and tear are not covered by this guarantee, nor are consumables such as plugs, fuses etc.

Please note that the above terms and conditions may be updated from time to time and we therefore recommend that you check these each time you revisit the website.

Nothing in this guarantee or in the instructions relating to this product excludes, restricts or otherwise affects your statutory rights.

Disposal of Waste Batteries and Electrical and Electronic Equipment



This symbol on the product, its batteries or its packaging means that this product and any batteries it contains must not be disposed of with household waste. Instead, it is the user's responsibility to hand this over to an applicable collection point for the recycling of batteries and electrical and electronic equipment. This separate collection and recycling will help to conserve natural resources and prevent potential negative consequences for human health and the environment due to the possible presence of hazardous substances in batteries and electrical and electronic equipment, which could be caused by inappropriate disposal. Some retailers provide take-back services which allow the user to return exhausted equipment for appropriate disposal.

It is the user's responsibility to delete any data on electrical and electronic equipment prior to disposal. For more information about where to drop batteries, electrical and electronic waste off, please contact the local city/municipality office, household waste disposal service, or the retailer.



*To be eligible for the extended guarantee, go to **guarantee.upgs.com/beldray** and register your product within 30 days of purchase.

Find us on 

www.facebook.com/Beldray

Manufactured by:
UP Global Sourcing UK Ltd.,
UK. Manchester OL9 0DD.
Germany. 51149 Köln.

www.beldray.com

©Beldray Trademark. All rights reserved.



CD220616/MD011122/V6