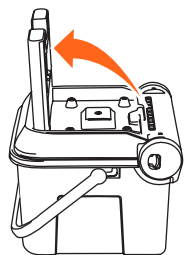


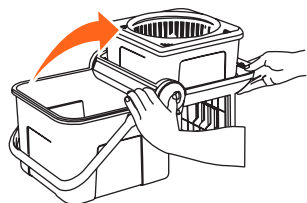
360 ° Spin Mop with Foldable Bucket Assembly Instructions

Assembling the Foldable Bucket

Pull the foot stand up and away from the top of the foldable bucket, until it locks into position and will move no further.



Push the button on the side of the foldable bucket to release the drying section, then open it out until the foot stand is resting on the floor.



Filling the Foldable Bucket

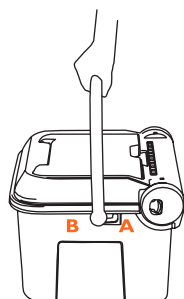
Fill the foldable bucket with warm, soapy water, ensuring that it does not exceed the Max. fill mark.

Caution: When filling the mop bucket, use only the recommended amount of detergent or disinfectant, according to the manufacturer's instructions; using too much will result in excessive suds, which can prevent the mop head from being rinsed or spun efficiently.

Moving the Foldable Bucket

To move the foldable bucket when it is open, move the handle into position A.

Move the handle into position B to move the foldable bucket when it is closed.



Carefully move the foldable bucket to the desired position by holding the handle with one hand and supporting the foldable bucket with the other to keep it balanced.

When the foldable bucket is in the desired position on a flat, even floor, lightly press down the foot stand to activate the suction pads; this will secure the foldable bucket in place.

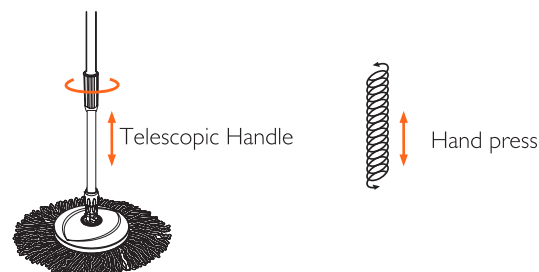
Note: Ensure that the handle is in the correct position before moving the foldable bucket.

Note: If moving the mop bucket whilst it is full, ensure that it is kept balanced.

Caution: Do not exceed the Max. fill mark.

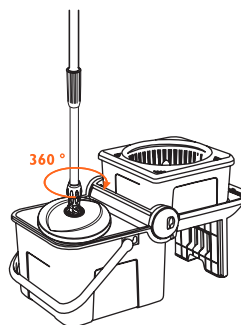
Instructions for Use

The telescopic mechanism is used to create the spinning function and to adjust the height of the 360 ° Spin mop. To unlock the mechanism, turn the telescopic mechanism clockwise. To lock it again, turn the telescopic mechanism anticlockwise.



Wetting the Mop Head

Holding the 360 ° Spin Mop in an upright position, unlock the mop handle by twisting the telescopic mechanism in a clockwise direction. Place the 360 ° Spin mop into the washing section of the foldable bucket, ensuring that the mop head connects with the spinning mechanism at the base.



Push the handle downwards to move the telescopic section – the mop head will spin in a clockwise direction. Pull the handle back up to reset the telescopic section.

Repeat the process until the mop head is wet.

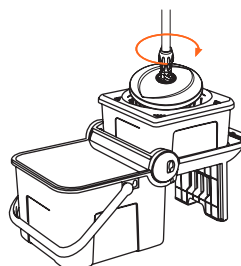
Ensure that the mop head has stopped spinning, then carefully pull the 360 ° Spin mop out of the mop bucket and allow it to drain slightly.

Wringing the Mop Head

Place the 360 ° Spin mop into the wringing section of the foldable bucket, ensuring that the mop head connects with the spinning mechanism at the base.

Push the handle downwards to move the telescopic section - the mop head will spin in a clockwise direction. Pull the handle back up to reset the telescopic section.

Repeat the process until the mop head is wrung sufficiently.



Using the 360 ° Spin Mop

Unlock the mop handle by twisting the telescopic mechanism in a clockwise direction.

Extend the mop handle to a comfortable height and twist the telescopic mechanism in an anticlockwise direction to lock it into position.

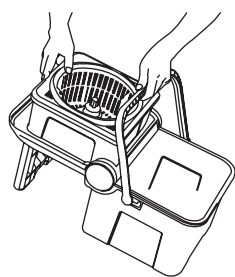
Use the 360 ° Spin mop as required, ensuring that the fabric of the mop head remains in contact with the floor to prevent any scratching or damage.

Emptying the Foldable Bucket

Carefully lift the wringing section of the mop bucket and tip it towards the mop bucket until any leftover water has drained.

Holding the handle with one hand and supporting the foldable bucket with the other, carry it to where the water will be emptied.

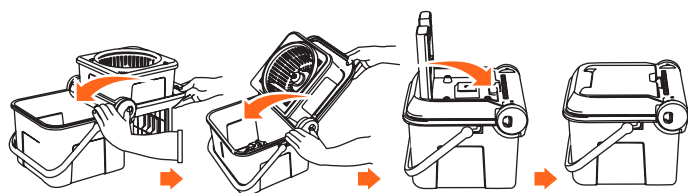
Slowly tip the foldable bucket, holding the handle and the wringing section until it is empty.



Storage

Press the button on the side of the foldable bucket and fold the wringing section in towards the mop bucket.

Push the foot stand in towards the top of the foldable bucket and ensure that the handle is in the correct position.



Caution

This product is not a toy.

Keep out of the reach of children.

Exercise extreme caution when carrying the foldable bucket when it is filled with hot water.

The foldable bucket and 360 ° Spin mop are not recommended for use with bleach, as this will cause the metal fittings to corrode.

The mop head is suitable for hand washing only.

Take care on slippery surfaces; ensure that the floor has dried thoroughly before walking across it.

Do not leave excess water on the floor, as this can cause damage and slippage.

Flooring can become scratched if care is not taken during mopping.

Ensure that the mop bucket is filled to the correct level to keep it balanced.

For domestic use only, not recommended for commercial purposes.

Distributed by:

UP Global Sourcing,
Victoria Street,
Manchester OL9 0DD. UK.

© 2014 Beldray Trademark. All rights reserved.

Please retain all instructions for future reference.

Made in China.

CD091014/MD101014/V2

