

Please read all of the instructions carefully and retain for future reference.

Safety Instructions

When using electrical products, basic safety precautions should always be followed.

This product is not intended for use by persons, including children with reduced physical, sensory or mental capabilities, lack of experience or knowledge. A person responsible for their safety should give them supervision and instruction in the use of the product.

Children should be supervised at all times to ensure that they do not play with the product.

This product is not a toy.

This product contains no user serviceable parts. Only a qualified electrician should attempt repairs. Improper repairs may place the user at risk of harm.

Keep the product out of reach of children.

Keep the product away from heat or sharp edges that could cause damage.

Keep the product away from other heat emitting products.

Keep the product clean and free of dust, lint, hair etc.

Do not immerse the product in water or any other liquid.

Do not operate the product with wet hands.

Do not operate the product if it has been exposed to water, moisture or any other liquid, to prevent against electric shock, explosion and/or injury to yourself and damage to the product.

Do not use the product outdoors.

Do not store the product in direct sunlight or in high humidity conditions.

Do not move the product whilst it is in use.

Do not operate the product after a malfunction or if it has been dropped or damaged in any way.

Do not use the product for anything other than its intended use.

This product is intended for domestic use only. It should not be used for commercial purposes.

Battery Safety

Ensure that the battery compartment is secure.

Only batteries of the same or equivalent type as those recommended should be used with this product.

Only use those batteries recommended.

Batteries are to be inserted with the correct polarity and should not be exposed to excessive heat sources such as fire and direct sunlight.

Replace a full set of batteries at any one time.

Remove any batteries from the product when it is not being used for a long period of time to avoid leakage.

Exhausted batteries should be removed from the product to avoid leakage.

In the event of the battery leaking, do not allow any liquid to come into contact with the skin or eyes. If contact has been made, wash the affected area with copious amounts of water and seek medical advice.

Keep batteries out of reach of children.

Non-rechargeable batteries should not be recharged.

Rechargeable batteries must be removed from the product before being charged.

Rechargeable batteries should only be recharged under adult supervision.

The supply terminals are not to be short-circuited.

Exhausted batteries must be removed and disposed of safely.

Do not dispose of batteries in a fire.

Do not crush, puncture, dismantle or otherwise damage the batteries.

Do not mix alkaline, standard (carbon zinc) and rechargeable batteries (nickel hydride).

Do not mix old and new batteries.

Do not expose batteries to heat or fire as they may explode.

Do not subject the battery (batteries) to mechanical shock.

Do not dispose of batteries in your household waste.

To dispose of the batteries, take them to your local recycling station. Contact your local government offices for details.

This product requires 4 x AA batteries (not included).

Getting Started

Remove the product from the box.
Remove any packaging from the product.
Place the packaging inside the box and either store or dispose of safely.

In the Box

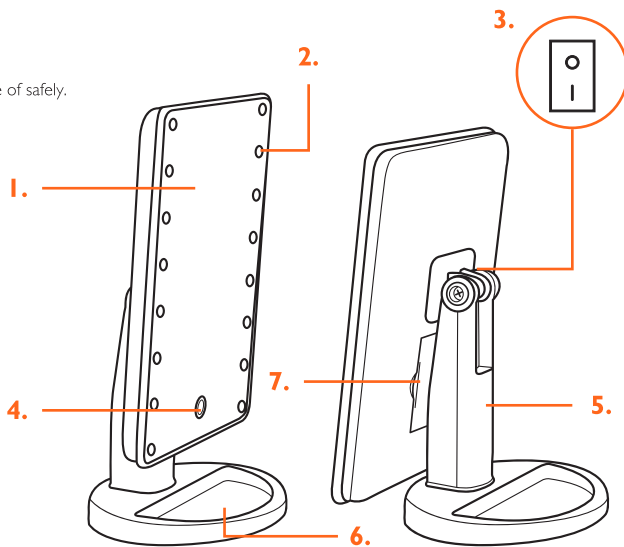
Large LED Mirror
Instruction manual

Features

16 LED lights
Smart touch switch
180° rotation
Storage tray for accessories
Mirror size: 22 x 16 cm
Requires 4 x AA batteries (not included)

Description of Parts

1. Mirror
2. LED lights
3. On/Off switch
4. Smart touch switch
5. Stand
6. Storage tray
7. Battery compartment



Battery Installation

To replace or install the batteries, remove the battery cover from the back of the Large LED Mirror. Carefully remove the exhausted batteries (if necessary) and dispose of safely. Insert the new batteries (4 x AA not included) according to the polarity indicated in the battery compartment. Replace the battery cover on the back of the Large LED Mirror.

Instructions for Use

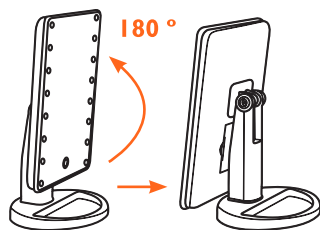
STEP 1: Turn on the Large LED Mirror by flicking the 'On/Off' switch to the 'On' position.

STEP 2: To turn on the LED lights, press the smart touch switch.

STEP 3: Push the smart touch switch to turn off the LED lights.

STEP 4: Flick the 'On/Off' switch to the 'Off' position to turn off the Large LED Mirror.

Note: The Large LED Mirror can be rotated 180° by carefully flipping it up and over the stand. Accessories can be placed into the storage tray to keep them safe.



Care and Maintenance

Wipe the Large LED Mirror with a soft, damp, lint-free cloth and allow to dry thoroughly.

Do not immerse the Large LED Mirror in water or any other liquid.

Do not expose the Large LED Mirror to liquid, moisture or humidity to avoid the product's internal circuit being affected.

Do not use any abrasive cleaning solvents to clean the Large LED Mirror, as this can cause damage.

Do not expose the Large LED Mirror to sharp objects, which may cause damage.

Do not expose the Large LED Mirror to extremely high or low temperatures as this will shorten the life of electronic devices, destroy the battery or distort certain plastic parts.

Do not drop the Large LED Mirror, as the internal circuit may become damaged.

Do not attempt to disassemble the Large LED Mirror, as this may cause damage to the product.

Do not dispose of the Large LED Mirror in a fire as it will result in an explosion.

Specifications

Product code: LA033895

Battery: 4 x AA (not included)



Distributed by: